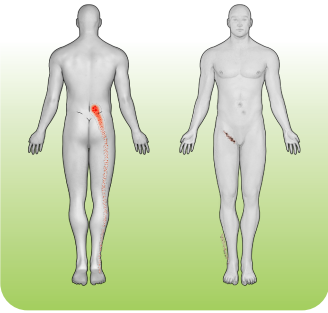
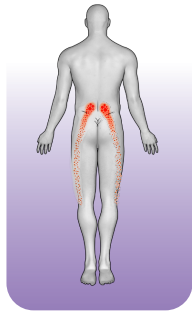


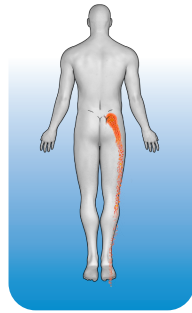
Sacroiliac joint (SIJ)



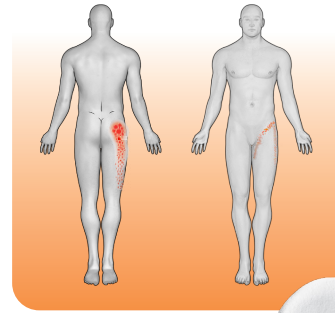
SIJ (23%)¹



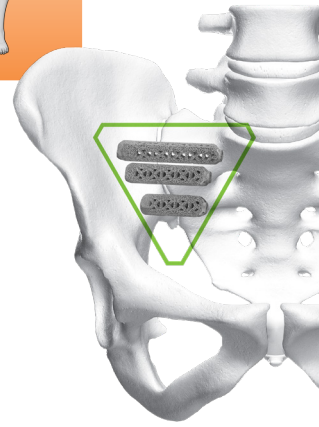
Facets (22%)¹



Intervertebral disc (19%)¹



Hip (14%)¹



- SIJ pain patterns are similar to hip and spine pathology ^{1,2}
- 5 years after a lumbar fusion, degenerative changes of the SI joint were detected on imaging in 75% of the patients ³

Diagnosis of SI Joint Disorders

Patient Points to the Pain



Fortin Finger Test

Intra-articular infiltration



Usage of local anaesthetic & contrast medium:
Pain reduction > 50%⁴

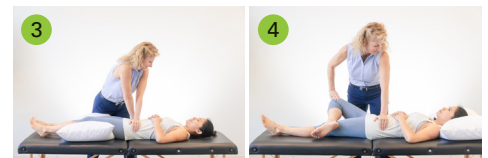
Provocation tests

Recommendation: 3 of 5 positive



Thigh Thrust

Compression



Distraction

FABER

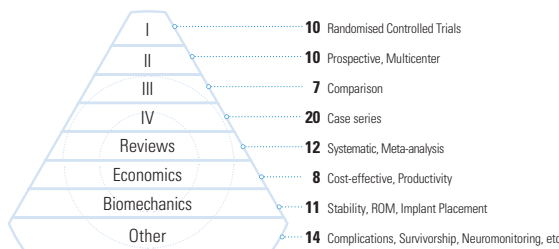


Gaenslen's

Study

More than 90 publications including randomised and prospective studies verify our approach⁵

Complication rate ~ 3%⁶



inSite LV. 1, 19 Centres, n= 148

iMIA LV. 1, 9 Centres, n= 103

SiFi LV.2, 26 Centres, n= 172

LOis LV.2, 12 Centres, n= 93

SiFi LV.2, 1 Centres, n= 51

iFuse Product Benefits

The iFuse Implant System® is developed for sacroiliac joint fusion, including high and low energy fractures of the pelvic ring.

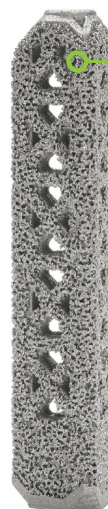
Pressfit placement between implant and the surrounding bone

Rotation stability with 6x more rotational resistance than screws thanks to the unique triangular design of the implant⁷

3D surface resembles cancellous bone and facilitates osseointegration⁸⁻¹⁰

Self-Harvesting Bone Technology: iFuse-3D captures bone during implantation that may be deposited into the implant¹¹

Loading of autogenous or allogeneous material possible



iFuse-3D Surface

Porosity

65%

Pore size

300 µm

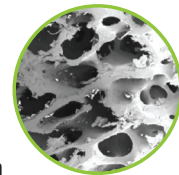
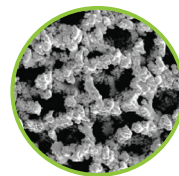
Cancellous bone

Porosity

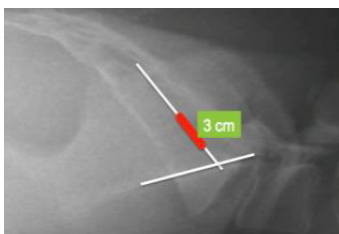
60-70%

Pore size

200 - 400 µm



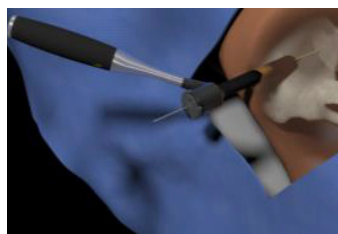
Surgical Technique



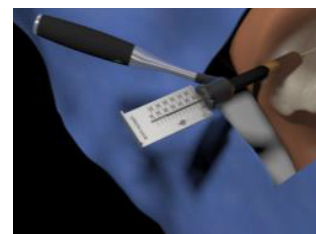
Skin incision (~3cm)



Pin



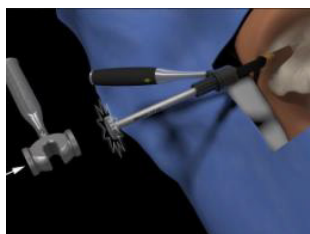
Soft tissue protector



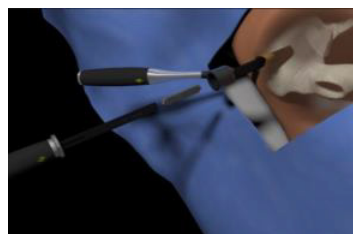
Measure



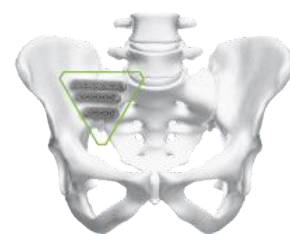
Drill (optional)



Broach



Inserting the implant



Repeat (2x)

References

- Bernard TN Jr, Kirkaldy-Willis WH. Recognizing specific characteristics of nonspecific low back pain. *Clin Orthop Relat Res*. 1987 Apr;(217):266-80. PMID: 2951048.
- Sembrano JN, Polly DW Jr. How often is low back pain not coming from the back? *Spine (Phila Pa 1976)*. 2009 Jan 1;34(1):E27-32. DOI: 10.1097/BRS.0b013e31818b8882.
- Ha KY, Lee JS, Kim KW. Degeneration of sacroiliac joint after instrumented lumbar or lumbosacral fusion: a prospective cohort study over five year follow up. *Spine*. 2008 May 15;33(11):1192-8.
- Guideline according to ISASS & ASIPP standard.
- www.si-bone.com/results
- Polly DW, Swofford J, Whang PG, Frank CJ, Glaser JA, Limoni RP, Cher DJ, Wine KD, Sembrano JN, and the INSITE Study Group. *Int J Spine Surg*. 2016;10:Article 28. DOI: 10.14444/3028
- SI-BONE Technical Study 300610-TS (compares iFuse to a 12mm cannulated SI joint screw).
- MacBarb RF, et al. Fortifying the Bone Implant Interface Part 1: An In Vitro Evaluation of 3D Printed and TPS Porous Surfaces. *Int J Spine Surg*. 2017;11(3):105-15.
- Karageorgiou V, Kaplan D. Porosity of 3D Biomechanical Scaffolds and Osteogenesis. *Biomaterials*. 2005;26(27):5474-91.
- Hutmacher DW. Scaffolds in Tissue Engineering Bone and Cartilage. *Biomaterials*. 2000;21(24):2529-43
- MacBarb RF, et al. Fortifying the Bone Implant Interface Part 2: An In Vivo Evaluation of 3D Printed and TPS Coated Triangular Implants. *Int J Spine Surg*. 2017;11(3):116-28.

Importers

SI-BONE S.r.l. European HQ
Via Postcastello, 6
21013 Gallarate (VA),
Italy
t +39 0331 1561179
infoeurope@si-bone.com

SI-BONE Deutschland GmbH
Soldnerstraße 11
D - 68219 Mannheim,
Germany
t +49 (621) 976860 00
infodeutschland@si-bone.com

SI-BONE UK Ltd.

Unit 7b, St James Business Park
Knaresborough, North Yorkshire
HG5 8QB, UK
t +44 1423 860025
Infouk@si-bone.com

SI-BONE France

6 Rue des Merisiers
FR-68920 Wettolsheim les Erlen,
France
t +33 (0)9 73 79 03 92
france@si-bone.com



MedPass SAS

95 bis boulevard Pereire
75017 Paris, France
t +33 (0)1 42 12 28 84

The iFuse Implant System® is intended for the fusion of the sacroiliac joint. It may not be suitable for all patients, and not every patient needs to benefit from it.

You can find information on the risks at www.si-bone.com/label

SI-BONE and iFuse Implant System are registered trademarks of SI-BONE, Inc. © 2021 SI-BONE, Inc. All rights reserved. Patents www.si-bone.com



OUS

PROVIDERS

10899.020421(EN)

si-bone.com



SI-BONE, Inc. - Global HQ

471 El Camino Real,
Suite 101
Santa Clara, CA 95050
USA

t 408.207.0700
f 408.557.8312
info@si-bone.com
www.si-bone.com