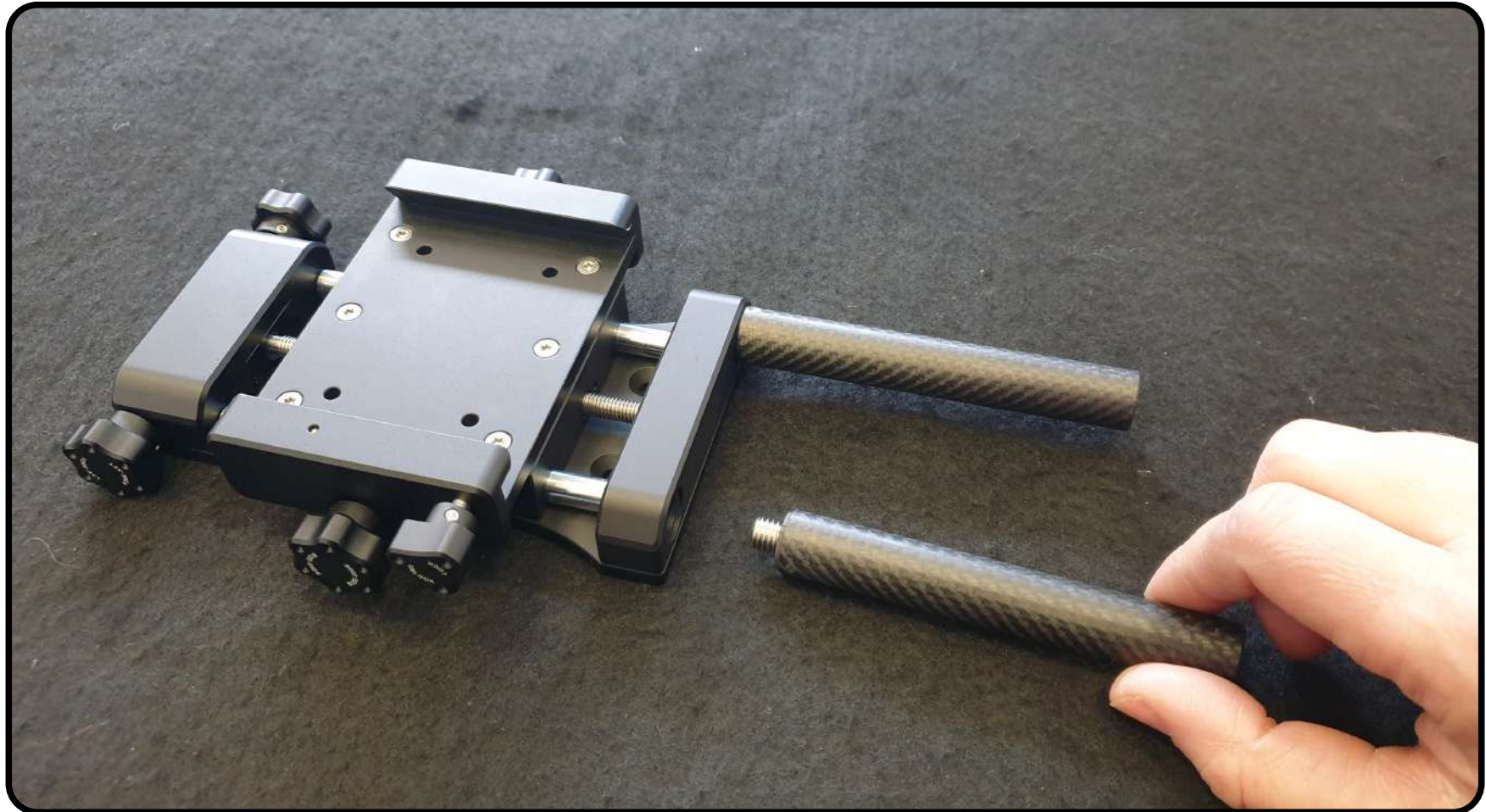


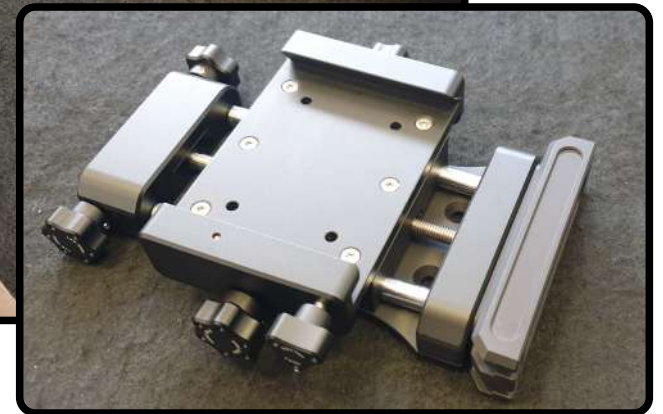
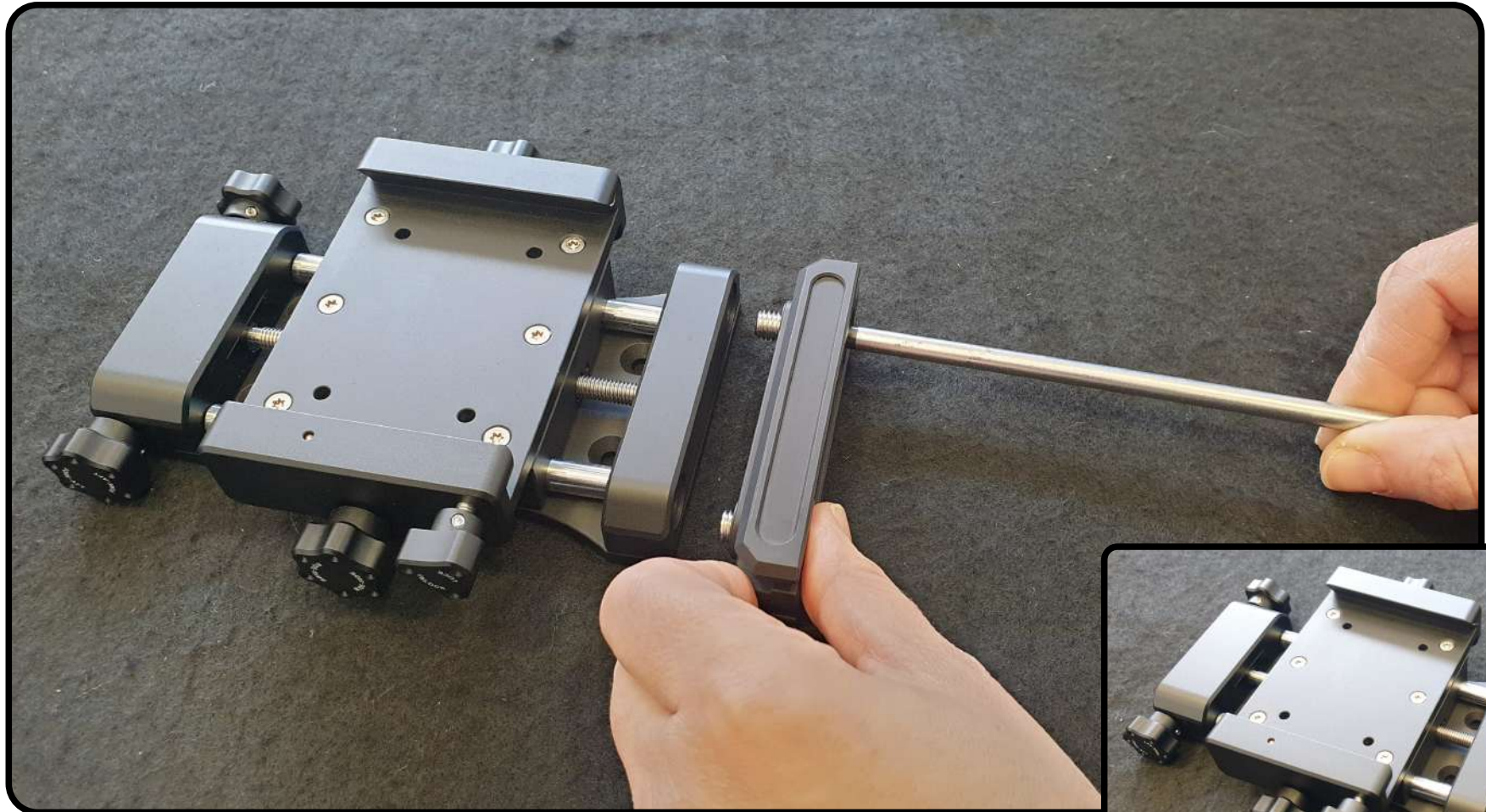
STEP 1/5

Remove both rods from the top stage simply rotating counter-clockwise each rod



STEP 2/5

Take the volt bracked screw in position using the an allen key. n.5 (metric). Verify to well tight both screws



STEP 3/5

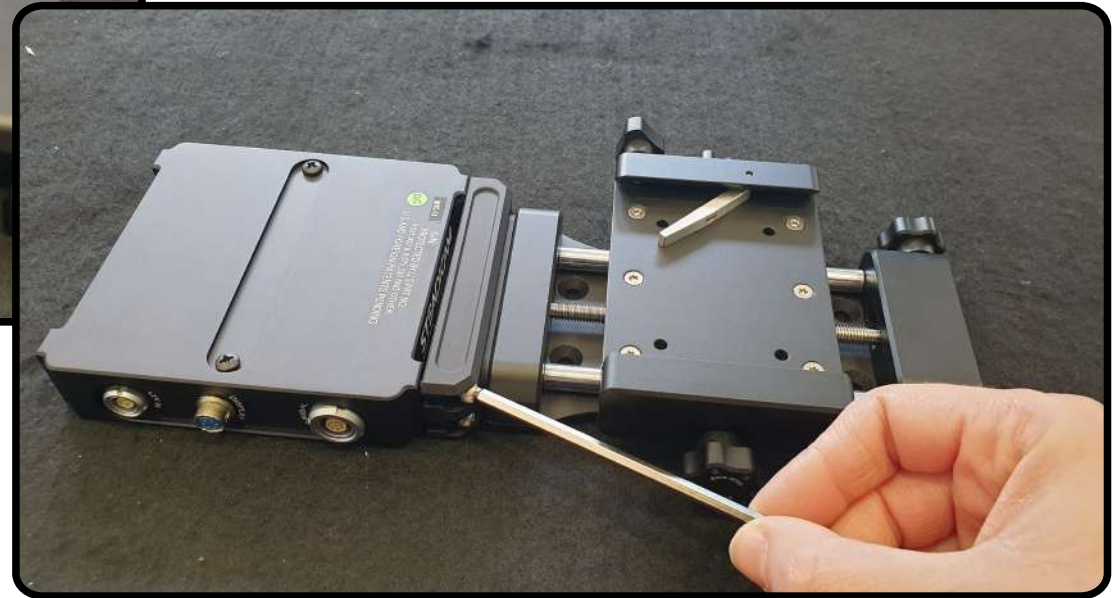
Slide the volt brain into the bracket.
Follow the right orientation for regular or
goofy mode



NOTE : the pictures are referred to "regular mode"

STEP 4/5

With a ball-end allen key for the screw provided, gently insert the remaining two screws in bundle with the kit, progressively tightening both little by little



NOTE : we are aware that the procedure is not so comfortable and without the necessary headroom.
We preferred this way in order to grant to every customer the possibility to upgrade their existing TopStage rather than force them to buy a new one.

STEP 5/5

Complete the installation tightening the other two screws, previously used as reference for the slide-in procedure

