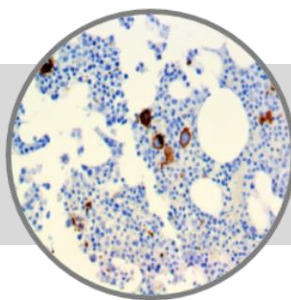


# CD42b, RMab

**Clone: EP409**

Rabbit Monoclonal

**IVD**
**Bio SB**  
 BIOSCIENCE FOR THE WORLD
 

www.biosb.com

*Inset: IHC of CD42b on a FFPE Bone Marrow Tissue*

## Intended Use

For In Vitro Diagnostic Use.

This antibody is intended for use in Immunohistochemical applications on formalin-fixed paraffin-embedded tissues (FFPE), frozen tissue sections and cell preparations. Interpretation of results should be performed by a qualified medical professional.

\* The CD42b antibody, clone EP409, has been manufactured using Epitomics RabMab® technology covered under Patent No.'s 5,675,063 and 7,402,409.

## Immunogen

A synthetic peptide corresponding to residues of human CD42b protein.

## Summary and Explanation

CD42b Platelet glycoprotein Ib alpha chain also known as glycoprotein Ib (platelet) or alpha polypeptide is a protein that in humans is encoded by the *GP1BA* gene. The Gp Ib functions as a receptor for von Willebrand factor (VWF), which includes noncovalent association of the alpha and beta subunits with platelet glycoprotein IX and platelet glycoprotein V. The binding of the GP Ib-IX-V complex to VWF facilitates initial platelet adhesion to vascular subendothelium after vascular injury, and also initiates signaling events within the platelet that lead to enhanced platelet activation, thrombosis, and hemostasis. This gene encodes the alpha subunit. Several polymorphisms and mutations have been described in this gene, some of which are the cause of Bernard-Soulier syndromes and platelet-type von Willebrand disease.

CD42b is a marker of megakaryocytes and platelets and used in the Diagnosis of AML-M7 to distinguish AML-M7 (CD42b+) from acute myelosis with myelofibrosis (usually CD42b-). Acute megakaryoblastic leukemia has a significantly higher proportion of blasts expressing CD42b. Patients with *Histoplasma capsulatum* infections have been noted with unusual IHC positivity of the platelet associated marker CD42b/GP1b expressed on the surface of this fungal organisms. Evaluation of additional cases demonstrated that a majority of histoplasmosis cases (83%) showed positive staining with CD42b/GP1b, comparable to GMS stain results.

<b>Antibody Type</b>	Rabbit Monoclonal	<b>Clone</b>	EP409
<b>Isotype</b>	IgG	<b>Reactivity</b>	Paraffin, Frozen
<b>Localization</b>	Cytoplasmic, Membranous	<b>Control</b>	Bone Marrow, Spleen
<b>Species Reactivity</b>	Human		

## Presentation

CD42b is a rabbit monoclonal antibody derived from cell culture supernatant that is concentrated, dialyzed, filter sterilized and diluted in buffer pH 7.5, containing BSA and sodium azide as a preservative.

<b>Catalog No.</b>	<b>Antibody Type</b>	<b>Dilution</b>	<b>Volume/Qty</b>
BSB 3504	Tinto Prediluted	Ready-to-Use	3.0 mL
BSB 3505	Tinto Prediluted	Ready-to-Use	7.0 mL
BSB 3506	Tinto Prediluted	Ready-to-Use	15.0 mL
BSB 3507	Concentrated	1:50 - 1:200	0.1 mL
BSB 3508	Concentrated	1:50 - 1:200	0.5 mL
BSB 3509	Concentrated	1:50 - 1:200	1.0 mL

## Control Slides Available

<b>Catalog No.</b>	<b>Quantity</b>
BSB 3510	5 slides

## Precautions

1. For professional users only. Results should be interpreted by a qualified medical professional.
2. This product contains <0.1% sodium azide (NaN<sub>3</sub>) as a preservative. Ensure proper handling procedures are used with this reagent.
3. Always wear personal protective equipment such as laboratory coat, goggles and gloves when handling reagents.
4. Dispose of unused solution with copious amount of water.
5. Do not ingest reagent. If reagent is ingested, seek medical advice immediately.
6. Avoid contact with eyes. If contact occurs, flush with large quantities of water.
7. Follow safety precautions of the heating device used for epitope retrieval (TintoRetriever Pressure Cooker or similar).
8. For additional safety information refer to Safety Data Sheet for this product.
9. For complete recommendations for handling biological specimens, please refer to the CDC document, "Guidelines for Safe Work Practices in Human and Animal Medical Diagnostic Laboratories" (4).

**Storage** Store at 2-8°C (Control Slides: Store at 20-25°C)

## Stability

**This product is stable up to the expiration date on the product label.** Do not use after expiration date listed on package label. Temperature fluctuations should be avoided. Store appropriately when not in use, and avoid prolonged exposure to room temperature conditions.

## Specimen Preparation

**Paraffin sections:** The antibody can be used on formalin-fixed paraffin-embedded (FFPE) tissue sections. Ensure tissue undergoes appropriate fixation for best results. Pre-treatment of tissues with heat-induced epitope retrieval (HIER) is recommended using Bio SB ImmunoDNA Retriever with Citrate (BSB 0020-BSB 0023), ImmunoDNA Retriever with EDTA (BSB 0030-BSB 0033) or ImmunoDNA Digestor (BSB 0108-0112). See reverse side for complete protocol. Tissue should remain hydrated via use of Bio SB Immuno/DNA Washer solutions (BSB 0029 & BSB 0042).

**Frozen sections and cell preparations:** The antibody can be used for labeling acetone-fixed frozen sections and acetone-fixed cell preparations.

## Staining Procedure

1. Cut and mount 3-5 micron formalin-fixed paraffin-embedded tissues on positively charged slides such as Bio SB Hydrophilic Plus Slides (BSB 7028).
2. Air dry for 2 hours at 58° C.
3. Deparaffinize and rehydrate tissues.
4. Subject tissues to heat induced epitope retrieval (HIER) using a suitable retrieval solution such as ImmunoDNA Retriever with Citrate (BSB 0020-BSB 0023) or EDTA (BSB 0030-BSB 0033).
5. Any of three heating methods may be used:

### a. TintoRetriever Pressure Cooker or Equivalent

Place tissues/slides in a staining dish or coplin jar containing the ImmunoDNA Retriever with Citrate or EDTA, and place on trivet in the pressure cooker. Add 1-2 inches of distilled water to the pressure cooker and turn heat to high. Incubate for 15 minutes. Open and immediately transfer slides to room temperature.

### b. TintoRetriever PT Module or Water Bath Method

Place tissues/slides in a pre-warmed staining dish or coplin jar containing the ImmunoDNA Retriever with Citrate or EDTA at 95°-99° C. Incubate for 30-60 minutes.

### c. Conventional Steamer Method

Place tissues/slides in a pre-warmed staining dish or coplin jar containing the ImmunoDNA Retriever with Citrate or EDTA in a steamer, cover and steam for 30-60 minutes.

6. After heat treatment, transfer slides in ImmunoDNA Retriever with Citrate or EDTA to room temperature and let stand for 15-20 minutes.
7. For manual staining, perform antibody incubation at ambient temperature. For automated staining methods, perform antibody incubation according to instrument manufacturer's instructions.
8. Wash slides with ImmunoDNA washer or DI water.
9. Continue IHC staining protocol. Wash slides between each step with ImmunoDNA washer solution.

## Abbreviated Immunohistochemical Protocol

Step	ImmunoDetector AP/HRP	PolyDetector AP/HRP	PolyDetector Plus AP/HRP
Peroxidase/AP Blocker	5 min.	5 min.	5 min
Primary Antibody	30-60 min.	30-60 min.	30-60 min.
1st Step Detection	10 min.	30-45 min.	15 min.
2nd Step Detection	10 min.	Not Applicable	15 min.
Substrate-Chromogen	5-10 min.	5-10 min.	5-10 min.
Counterstain / Coverslip	Varies	Varies	Varies

## Mounting Protocols

For detailed instructions using biodegradable permanent mounting media such as XyGreen PermaMounter (BSB 0169-0174) or organic solvent based resin such as PermaMounter (BSB 0094-0097), refer to PI0174 or PI0097.

## Product Limitations

Due to inherent variability present in immunohistochemical procedures (including fixation time of tissues, dilution factor of antibody, retrieval method utilized and incubation time), optimal performance should be established through the use of positive and negative controls. Results should be interpreted by a qualified medical professional.

## References

1. "Entrez Gene: GP1BA glycoprotein Ib (platelet), alpha polypeptide".
2. Orazi A, et al. Acute panmyelosis with myelofibrosis: an entity distinct from acute megakaryoblastic leukemia. Mod Pathol. 2005 May;18(5):603-14
3. Ku NK, et al. Use of CD42b immunohistochemical stain for the detection of Histoplasma. Ann Diagn Pathol. 2018 Feb; 32:47-50.
4. U.S. Department of Health and Human Services: Centers for Disease Control and Prevention. Guidelines for Safe Work Practices in Human and Animal Medical Diagnostic Laboratories. Supplement / Vol. 61, January 6, 2012.

## Symbol Key / Légende des symboles/Erläuterung der Symbole

	In Vitro Diagnostic Medical Device Dispositif médical de diagnostic in vitro In-Vitro-Diagnostikum		Storage Temperature Limites de température Zulässiger Temperaturbereich		Manufacturer Fabricant Hersteller		Catalog Number Référence du catalogue Bestellnummer
			Read Instructions for Use Consulter les instructions d'utilisation Gebrauchsanweisung beachten		Expiration Date Utiliser jusque Verwendbar bis		Lot Number Code du lot Chargenbezeichnung

**Bio SB**  
BIOSCIENCE FOR THE WORLD



69 Santa Felicia Dr., Santa Barbara, CA 93117, USA  
Tel. (805) 692-2768 | Tel. (800) 561-1145 | Fax. (805) 692-2769  
E-mail: sales@biosb.com | Website: www.biosb.com