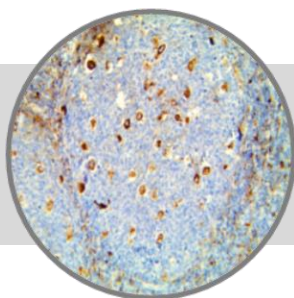


Alpha-1-Antichymotrypsin, RMAb**Clone: EP384**

Rabbit Monoclonal



IVD

Bio SB
 BIOSCIENCE FOR THE WORLD

www.biosb.com

*Inset: IHC of Alpha-1-Antichymotrypsin on a FFPE Tonsil Tissue***Intended Use**

For In Vitro Diagnostic Use.

This antibody is intended for use in Immunohistochemical applications on formalin-fixed paraffin-embedded tissues (FFPE), frozen tissue sections and cell preparations. Interpretation of results should be performed by a qualified medical professional.

* The Alpha-1-Antichymotrypsin antibody, clone EP384, has been manufactured using Epitomics RabMab® technology covered under Patent No.'s 5,675,063 and 7,402,409.

Immunogen

A synthetic peptide corresponding to residues of human Alpha1-Antichymotrypsin protein

Summary and Explanation

Alpha-1-Antichymotrypsin Glycoprotein found in alpha (1)-globulin fraction in human serum. It inhibits chymotrypsin-like proteinases in vivo and has cytotoxic killer-cell activity in vitro. The protein also has a role as an acute-phase protein and is active in the control of immunologic and inflammatory processes, and as a tumor marker. It is a member of the serpin superfamily.

Alpha-1-Antichymotrypsin antibody reacts with histiocytes and histiocytic neoplasms. Its major application is defining the presence of Alpha-1-Antichymotrypsin in histiocytes and tumors derived from them. In eosinophilic granuloma and malignant histiocytosis, the reaction for this marker is heterogeneous in intensity and distribution. In fibrous histiocytomas, under certain circumstances, a diffuse homogeneous reaction may be observed.

Antibody Type	Rabbit Monoclonal	Clone	EP384
Isotype	IgG	Reactivity	Paraffin, Frozen
Localization	Cytoplasmic	Control	Tonsil, Lymph Node, Thymus, Breast
Species Reactivity		Human	

Presentation

A-1-Antichymotrypsin is a rabbit monoclonal antibody derived from cell culture supernatant that is concentrated, dialyzed, filter sterilized and diluted in buffer pH 7.5, containing BSA and sodium azide as a preservative.

Special Note: Concentrated A-1-Antichymotrypsin antibody should be diluted to its working dilution in ImmunoDNA Background Blocker (Cat.# BSB 0103, BSB 0104, BSB 0105, BSB 0106 or BSB 0107).

Catalog No.	Antibody Type	Dilution	Volume/Qty
BSB 3497	Tinto Prediluted	Ready-to-Use	3.0 mL
BSB 3498	Tinto Prediluted	Ready-to-Use	7.0 mL
BSB 3499	Tinto Prediluted	Ready-to-Use	15.0 mL
BSB 3500	Concentrated	1:50 - 1:200	0.1 mL
BSB 3501	Concentrated	1:50 - 1:200	0.5 mL
BSB 3502	Concentrated	1:50 - 1:200	1.0 mL

Control Slides Available

Catalog No.	Quantity
BSB 3503	5 slides

Precautions

1. For professional users only. Results should be interpreted by a qualified medical professional.
2. This product contains <0.1% sodium azide (NaN₃) as a preservative. Ensure proper handling procedures are used with this reagent.
3. Always wear personal protective equipment such as laboratory coat, goggles and gloves when handling reagents.
4. Dispose of unused solution with copious amount of water.
5. Do not ingest reagent. If reagent is ingested, seek medical advice immediately.
6. Avoid contact with eyes. If contact occurs, flush with large quantities of water.
7. Follow safety precautions of the heating device used for epitope retrieval (TintoRetriever Pressure Cooker or similar).
8. For additional safety information refer to Safety Data Sheet for this product.
9. For complete recommendations for handling biological specimens, please refer to the CDC document, "Guidelines for Safe Work Practices in Human and Animal Medical Diagnostic Laboratories" (see References in this document).

Storage Store at 2-8°C (Control Slides: Store at 20-25°C)

Stability

This product is stable up to the expiration date on the product label. Do not use after expiration date listed on package label. Temperature fluctuations should be avoided. Store appropriately when not in use, and avoid prolonged exposure to room temperature conditions.

Specimen Preparation

Paraffin sections: The antibody can be used on formalin-fixed paraffin-embedded (FFPE) tissue sections. Ensure tissue undergoes appropriate fixation for best results. Pre-treatment of tissues with heat-induced epitope retrieval (HIER) is recommended using Bio SB ImmunoDNA Retriever with Citrate (BSB 0020-BSB 0023), ImmunoDNA Retriever with EDTA (BSB 0030-BSB 0033) or ImmunoDNA Digestor (BSB 0108-0112). See reverse side for complete protocol. Tissue should remain hydrated via use of Bio SB Immuno/DNA Washer solutions (BSB 0029 & BSB 0042).

Frozen sections and cell preparations: The antibody can be used for labeling acetone-fixed frozen sections and acetone-fixed cell preparations.

Staining Procedure

- Cut and mount 3-5 micron formalin-fixed paraffin-embedded tissues on positively charged slides such as Bio SB Hydrophilic Plus Slides (BSB 7028).
- Air dry for 2 hours at 58° C.
- Deparaffinize and rehydrate tissues.
- Subject tissues to heat induced epitope retrieval (HIER) using a suitable retrieval solution such as ImmunoDNA Retriever with Citrate (BSB 0020-BSB 0023) or EDTA (BSB 0030-BSB 0033).
- Any of three heating methods may be used:

a. TintoRetriever Pressure Cooker or Equivalent

Place tissues/slides in a staining dish or coplin jar containing the ImmunoDNA Retriever with Citrate or EDTA, and place on trivet in the pressure cooker. Add 1-2 inches of distilled water to the pressure cooker and turn heat to high. Incubate for 15 minutes. Open and immediately transfer slides to room temperature.

b. TintoRetriever PT Module or Water Bath Method

Place tissues/slides in a pre-warmed staining dish or coplin jar containing the ImmunoDNA Retriever with Citrate or EDTA at 95°-99° C. Incubate for 30-60 minutes.

c. Conventional Steamer Method

Place tissues/slides in a pre-warmed staining dish or coplin jar containing the ImmunoDNA Retriever with Citrate or EDTA in a steamer, cover and steam for 30-60 minutes.

- After heat treatment, transfer slides in ImmunoDNA Retriever with Citrate or EDTA to room temperature and let stand for 15-20 minutes.
- For manual staining, perform antibody incubation at ambient temperature. For automated staining methods, perform antibody incubation according to instrument manufacturer's instructions.
- Wash slides with ImmunoDNA washer or DI water.
- Continue IHC staining protocol. Wash slides between each step with ImmunoDNA washer solution.

Abbreviated Immunohistochemical Protocol

Step	ImmunoDetector AP/HRP	PolyDetector AP/HRP	PolyDetector Plus HRP
Peroxidase/AP Blocker	5 min.	5 min.	5 min
Primary Antibody	30-60 min.	30-60 min.	30-60 min.
1st Step Detection	10 min.	30-45 min.	15 min.
2nd Step Detection	10 min.	Not Applicable	15 min.
Substrate-Chromogen	5-10 min.	5-10 min.	5-10 min.
Counterstain / Coverslip	Varies	Varies	Varies

Mounting Protocols

For detailed instructions using biodegradable permanent mounting media such as XyGreen PermaMounter (BSB 0169-0174) or organic solvent based resin such as PermaMounter (BSB 0094-0097), refer to PI0174 or PI0097.

Product Limitations

Due to inherent variability present in immunohistochemical procedures (including fixation time of tissues, dilution factor of antibody, retrieval method utilized and incubation time), optimal performance should be established through the use of positive and negative controls. Results should be interpreted by a qualified medical professional.

References

- Isaacson P, et al. Lancet. 1979;2:964-965
- Palmer PE, et al. Am J Clin Pathol. 1974;62:350-354
- Palmer PE, et al. Cancer. 1980;45:1424-1431
- Kindblom LG, et al. Hum Pathol. 1982;13:834-840
- Raintoft I, et al. Hum Pathol. 1979;10:419-424
- Isaacson P, et al. Alpha-1 antitrypsin in human macrophages. Lancet II 1979; 964
- Silva FG, et al. Hum Pathol 1984; 15:494
- U.S. Department of Health and Human Services: Centers for Disease Control and Prevention. Guidelines for Safe Work Practices in Human and Animal Medical Diagnostic Laboratories. Supplement / Vol. 61, January 6, 2012.

Symbol Key / Légende des symboles/Erläuterung der Symbole

	In Vitro Diagnostic Medical Device Dispositif médical de diagnostic in vitro In-Vitro-Diagnostikum		Storage Temperature Limites de température Zulässiger Temperaturbereich		Manufacturer Fabricant Hersteller		Catalog Number Référence du catalogue Bestellnummer
			Read Instructions for Use Consulter les instructions d'utilisation Gebrauchsanweisung beachten		Expiration Date Utiliser jusque Verwendbar bis		Lot Number Code du lot Chargenbezeichnung



69 Santa Felicia Dr., Santa Barbara, CA 93117, USA
Tel. (805) 692-2768 | Tel. (800) 561-1145 | Fax. (805) 692-2769
E-mail: sales@biosb.com | Website: www.biosb.com