

# PRODUCT **CATALOGUE**

**Rear-loading containers**

**CONTENÜR**

# THE COMPANY

Providing solutions for more than 35 years

**CONTENUR** is involved in designing, manufacturing, marketing and maintaining urban waste containers, to improve the quality of life, sustainability and city landscaping.

Our industrial activity is completed with a wide range of services, which include advice on adequate product implementation and the comprehensive maintenance of container parks, comprehensive management of litter bins and dog excrement bins, leisure areas, sports facilities and children's parks, in those cities where we are present.

It has been more than 35 years since **CONTENUR** played a leading role in containerisation as a phenomenon in Spain, becoming a reference company in the municipal solid waste sector when it opened its production plant in Getafe (Madrid).

Since its incorporation in 1984, **CONTENUR** has always pursued products and services conceived to improve urban waste management, taking on a fundamental role in Europe's containerisation process.

## A COMPANY THAT IS PRESENT WORLDWIDE TO PROVIDE LATEST GENERATION SOLUTIONS ►

Today, further to its experience as a leader on the Iberian market and the third most important in Europe, striving to consolidate its international growth and operations in more than 50 countries all over the world, **CONTENUR** offers city-tailored solutions that are flexible, integrated into their surroundings and day-to-day life.

One of **CONTENUR's** cornerstones is its international growth. This is why, in the 90's, it embarked on a new stage for growth by opening subsidiaries in Portugal, Italy, France and the United Kingdom; in 2011 it opened up branch offices in Poland and Morocco; and in 2013 in Brazil, Colombia and Germany, thereby helping further the containerisation process elsewhere.

Since then, **CONTENUR** has continued to consolidate its international expansion by achieving milestones, such as the inauguration of a production centre in Poland in 2012; the purchase of its third productive plant in Mandirituba (Brazil); opening up its subsidiaries in Singapore and the Czech Republic, in 2016 and 2017 respectively; and inaugurating its fourth industrial plant in the United Kingdom in 2021.



## WASTE CONTAINERISATION SOLUTIONS ►

### CONTAINERISATION AND CONSULTANCY SERVICES

We offer advice and consultancy services to ensure that the best mechanised collection system is implemented in each city.

### COMPREHENSIVE QUALITY SERVICE

**CONTENUR** programmes the best service for each city area and urban surroundings, optimising costs and maximising quality. It presents its clients with highly qualified staff, offering extensive experience, in order to cover inspection, maintenance and repair tasks related to containers and urban fixtures.

### MANUFACTURING AND INSTALLATION

**CONTENUR** has the latest production resources and technology available in the sector.

### DATA MANAGEMENT

Seeking to offer a comprehensive quality service, **CONTENUR** provides a data management service enabling service tracing through Smart solutions.

## WHY CHOOSE CONTENUR? ►



**CONTENUR's EXPERIENCE** in containerisation systems and associated services, guarantees innovating solutions that are both solid and reliable. This has constituted the company's hallmark for more than 35 years.



**QUALITY**, service level, proximity and a personalized service, along with client commitment have positioned the **CONTENUR** brand as a reference in developing solutions for cities.



Environmental friendliness and our **COMMITMENT TO SUSTAINABLE DEVELOPMENT** evidence **CONTENUR's** contribution in environmental issues, establishing different standardised environmental management systems in all its activities.



A **TEAM** of trained professionals, committed to the company's values, have turned **CONTENUR** into its clients' favourite choice and a source of motivation for its employees.



An **INTERNATIONAL OUTLOOK** and long-term vision have made **CONTENUR** the best option for our clients in over 50 countries.



Product **DESIGN** with solutions conceived for integration into urban surroundings, as another component, to encourage recycling and environmental friendliness.



**INNOVATION** is the key when developing new ways in which to respond to our clients' needs.

# 2-WHEELS

## REAR-LOADING CONTAINERS ▶

### ACCESSORIES ▶

**SELECTIVE OPENINGS –**

*\* Check each model's availability*

Openings used to recycle different types of waste: paper and cardboard, glass, packaging, organic, MSW...

Circular openings, available in the following diameters:

- ▶ Ø150 mm
- ▶ Ø200 mm
- ▶ Ø250 mm
- ▶ Ø300 mm

Paper opening, sizes available:

- ▶ 277 x 65 mm
- ▶ 341 x 80 mm
- ▶ 370 x 85 mm

Brush opening, sizes available:

- ▶ 300 x 30 mm
- ▶ 330 x 150 mm

Opening for confidential waste, size available:

- ▶ 300 x 30 mm
- ▶ 330 x 30 mm

**MANUAL OR AUTOMATIC LOCK –**

This prevents the container from opening.

**NUMBERING –**

On a plate or thermally printed on the body.

**CUSTOMISATION –**

Thermally printed on the body, maximum size 260 x 260 mm  
\*except for models 90 and 360 (maximum size 290 x 280 mm).

Thermally printed lid, maximum size 230 x 45 mm.

Customisation with a sticker or adhesive vinyl. Both the body and lid of the container may be customised.

**SIDE HANDLE –**

Facilitates container handling.



PEDAL –



LID-IN-LID –



DIVIDED WALL –


*\* Accessory available for models C180 and C240*



DOUBLE LID SYSTEM –


*\* Accessory available for models C180 and C240*

C80




- 80 L capacity
- 32 Kg nominal load
- 2 wheels 200 mm

C90




- 90 L capacity
- 36 Kg nominal load
- 2 wheels 200 mm

C120




- 120 L capacity
- 48 Kg nominal load
- 2 wheels 200 mm

C140




- 140 L capacity
- 56 Kg nominal load
- 2 wheels 200/250 mm

C180




- 180 L capacity
- 72 Kg nominal load
- 2 wheels 200/250 mm

C240



- 240 L capacity
- 96 Kg nominal load
- 2 wheels 200/250 mm

C360



- 340 L capacity
- 136 Kg nominal load
- 2 wheels 200/300 mm

# 4-WHEELS

## REAR-LOADING CONTAINERS ▶

### ACCESSORIES ▶

**SELECTIVE OPENINGS –**

*\* Check each model's availability*

Openings used to recycle different types of waste: paper and cardboard, glass, packaging, organic, MSW...

Circular openings, available in the following diameters:

- ▶ Ø150 mm
- ▶ Ø200 mm
- ▶ Ø250 mm
- ▶ Ø300 mm

Paper opening, sizes available:

- ▶ 277 x 65 mm
- ▶ 341 x 80 mm
- ▶ 370 x 85 mm

Brush opening, sizes available:

- ▶ 300 x 30 mm
- ▶ 330 x 150 mm

Opening for confidential waste, size available:

- ▶ 300 x 30 mm
- ▶ 330 x 30 mm

**MANUAL OR AUTOMATIC LOCK –**

This prevents the container from opening.

**NUMBERING –**

On a plate or thermally printed on the body.

**CUSTOMISATION –**

Thermally printed on the body, maximum size 260 x 260 mm  
\*except for models 90 and 360 (maximum size 290 x 280 mm).

Thermally printed lid, maximum size 230 x 45 mm.

Customisation with a sticker or adhesive vinyl. Both the body and lid of the container may be customised

**SIDE HANDLE –**

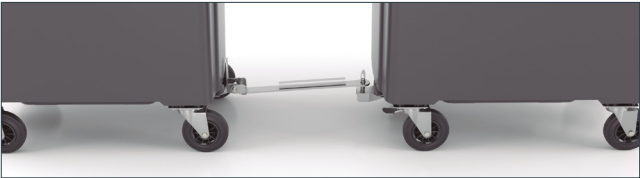
Facilitates container handling.



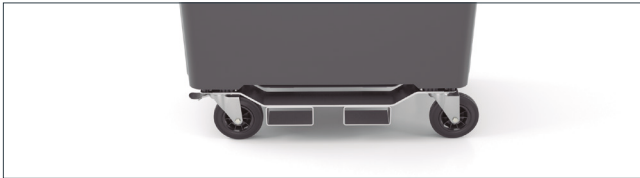
**PEDAL –**



**LID-IN-LID –**



**TOW KITS –**



**FORK POCKETS –**



**ACCESSIBILITY PACK –**



**DROP FRONT –**

C700



660 L capacity

264 Kg nominal load

4 wheels  
160/200 mm

C800



770 L capacity

308 Kg nominal load

4 wheels  
160/200 mm

C1100



1100 L capacity

440 Kg nominal load

4 wheels 200 mm

C1100 RT



1100 L capacity

440 Kg nominal load

4 wheels 200 mm



**www.  
contenur.  
pl/en**