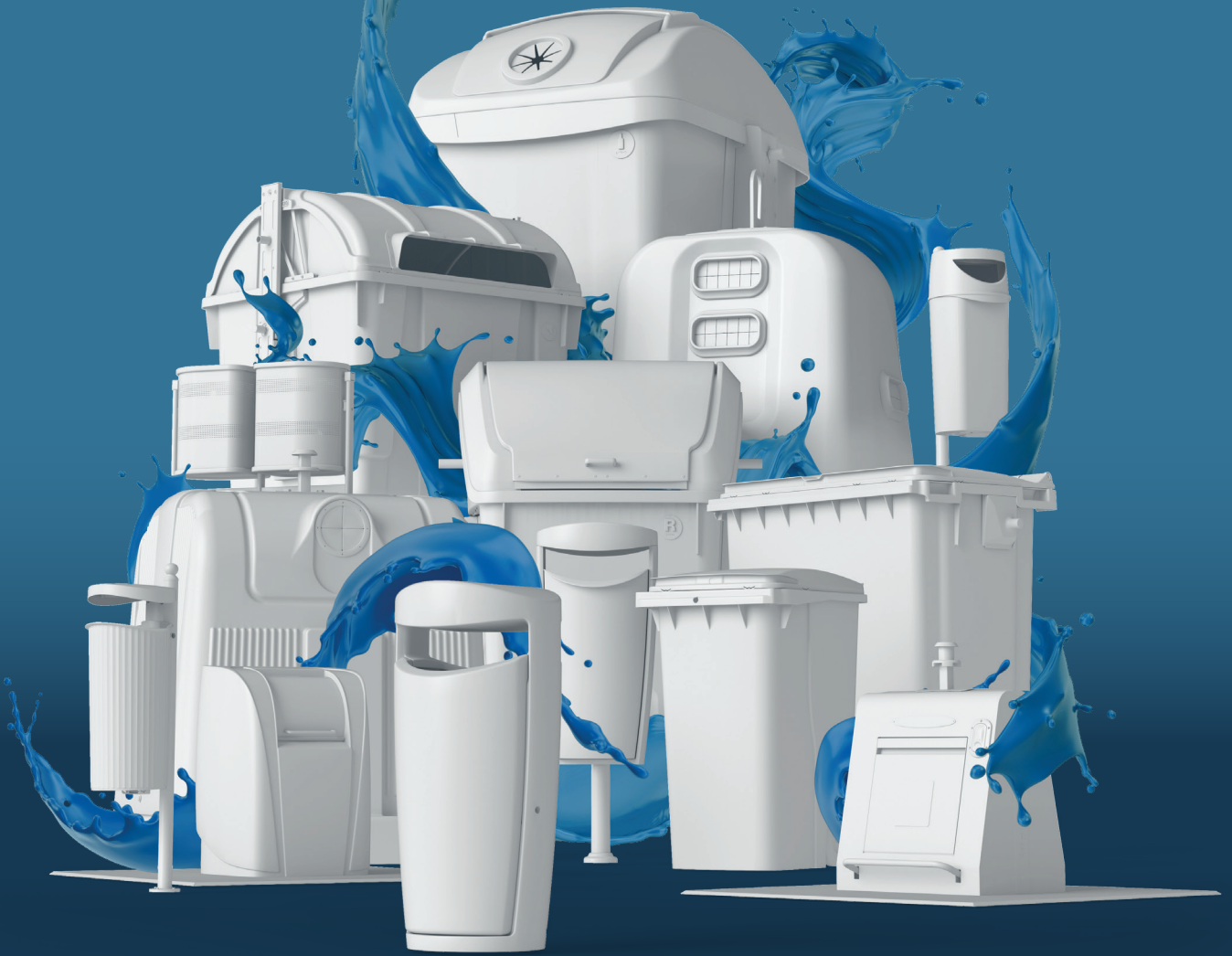


PRODUCT CATALOGUE



CONTENÜR



CONTENUR

Torneros 3
Pol. In. Los Ángeles
28906 Getafe
Madrid, España
contenur@contenur.es

www.contenur.com/en

PRODUCT
CATALOGUE

CLICK ON THE ELEMENTS
FOR MORE INFORMATION



UNDERGROUND CONTAINERS

Innovating and safe solutions

CONTENUR's underground containers have a recognisable **design, resistance and versatility.**

Designed to totally fit into city landscapes, historic centres included, as they are conceived for large storage capacity using the least possible space in the public thoroughfare. Modular and versatile, with potential to combine plastic and metal solutions.

Safety is guaranteed as they are fitted with safety platforms, whilst remaining environmentally-friendly.

Designed to guarantee efficient collection and hygiene, as they are very easily cleaned. Underground containers allow waste to be stored below the surface, helping reduce smells, avoiding access to the waste and reducing vandalism.



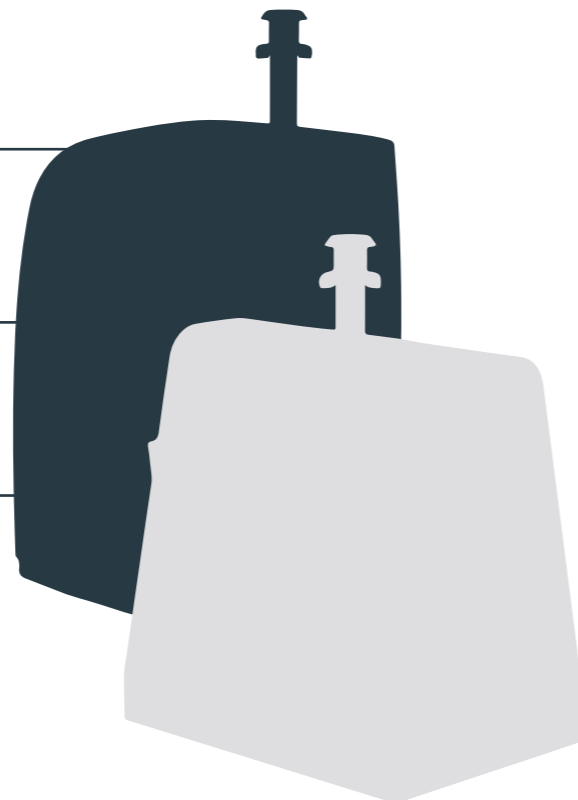
RESISTANCE



VERSATILITY



ACCESSIBILITY



UNDERGROUND CONTAINERS

CLICK ON THE ELEMENTS
FOR MORE INFORMATION



CRANE-LIFT SYSTEM

Our Crane-Lift underground containers are conceived to improve waste downloading and to reduce maintenance, thanks to their small number of parts. This system helps citizens in their waste deposit task, and is accessible to all users.

Product certified under standards UNE EN 13071 1,2,3:2008, awarded by an external certifying company and validated by ENAC (Urban Fixture Product Standards).

LIFTING SYSTEM –

An anti-rust metal lifting system, available for different collection systems: ordinary hook, double hook, triple hook and Kinshofer.

DISPOSAL COLUMN –

The disposal column is used to deposit the waste. **CONTENUR** offers a wide range of different models that adapt to each type of waste collection. Manufactured in different materials: galvanised steel, stainless steel and polyethylene.

PEDESTRIAN PLATFORM –

A pedestrian platform is manufactured in hot-galvanised anti-slip diamond plate sheet metal, or with a double cover, for mounting on the pavement.

CONTAINER –

The following volumes are available for this underground system: 3m³, 4m³ and 5m³.

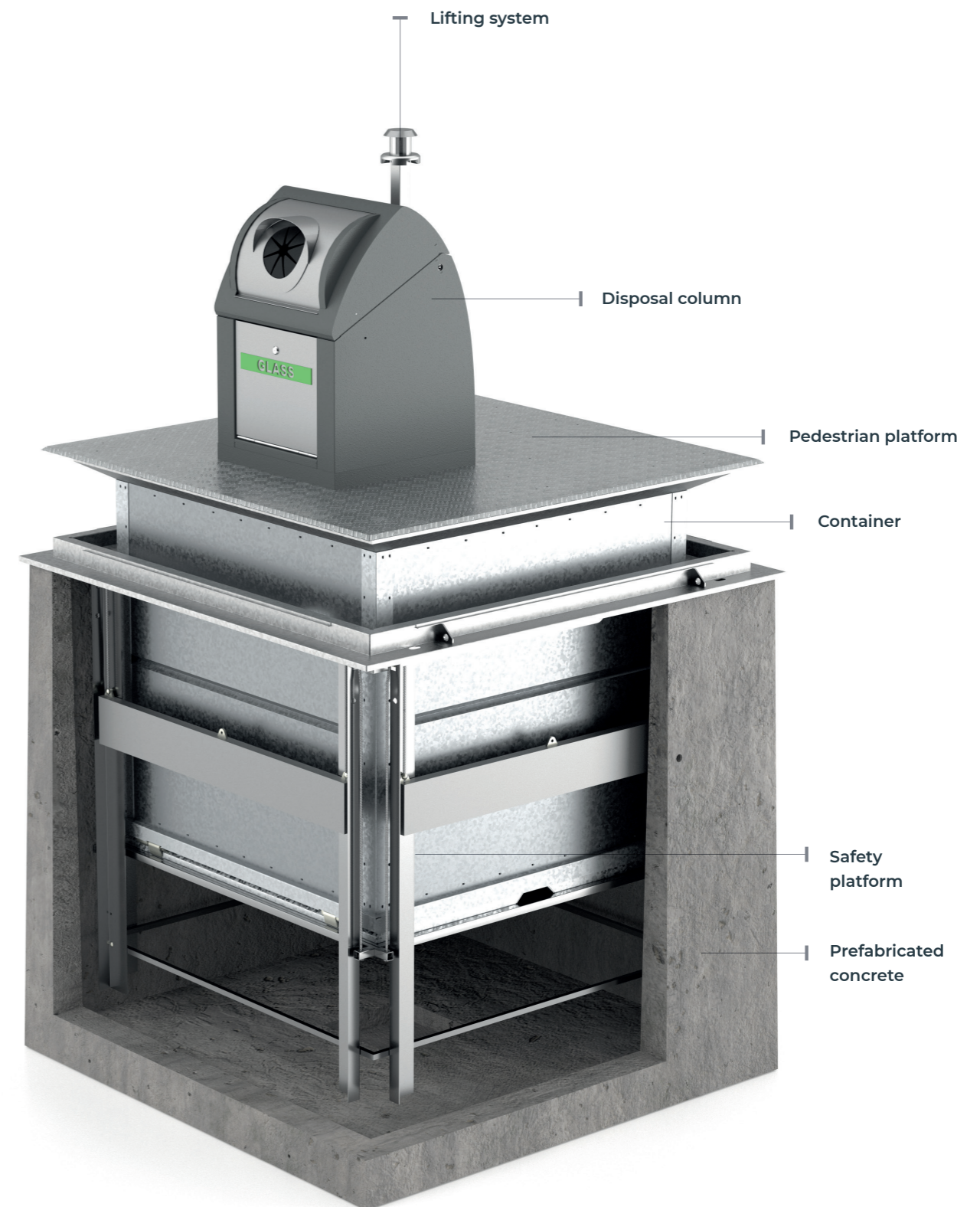
All underground containers are made of galvanised steel or PEHD.

SAFETY PLATFORM –

The system includes a safety platform made of galvanised steel, which lifts automatically when the container is in a downloading position. The platform avoid falls at a height, whether by downloading or equipment maintenance staff, or citizens.

PREFABRICATED CONCRETE –

Manufactured according to standard EN-206-1, as a single reinforced and highly resistant concrete block. Prefabricated concrete is highly resistant to earth forces, and is totally airtight and waterproof.



CLICK ON THE ELEMENTS
FOR MORE INFORMATION



HYDRAULIC SYSTEM

All Rear-Loading underground containers are conceived for city centres, avoiding the impact of visible waste and generating cleaner and open space. They may host up to 2, 3 or 4 Rear-Loading containers with capacity of up to 1100 L.

CONTENUR's RLSs are characteristically highly resistant and easy to maintain. They have been designed to withstand continued use in a hostile environment and have a useful life of more than 15 years. RLS equipment may be operated through a fast collector truck or an independent hydraulic central system.

DISPOSAL COLUMN -

The disposal column is where users deposit the waste. **CONTENUR** offers a large number of different models, adapted to each type of waste collection and manufactured in different materials: galvanised steel, stainless steel or polyethylene.

PEDESTRIAN PLATFORM -

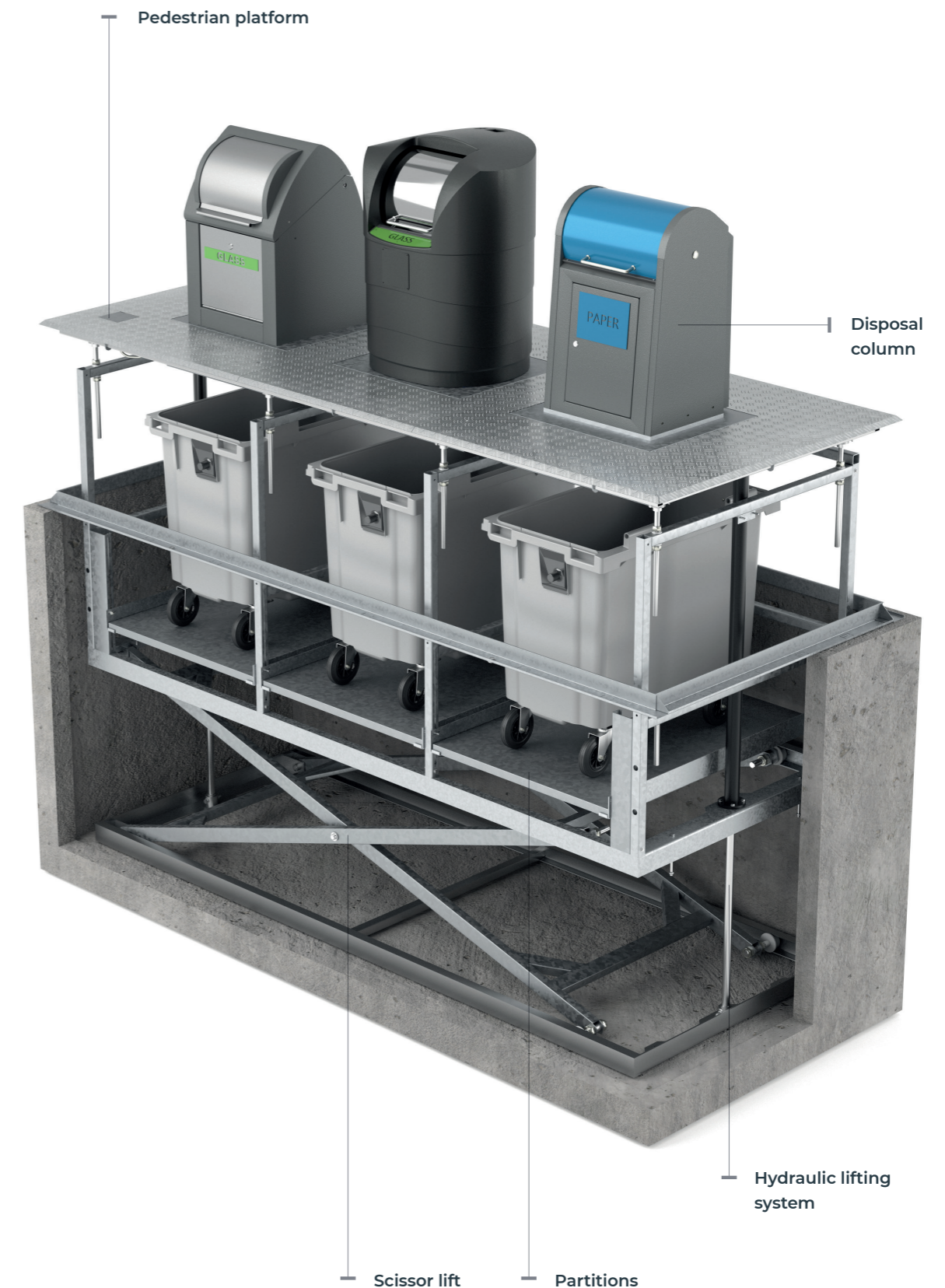
This structural component bears pavement weight and road traffic. It hinders incoming liquid or rainwater and avoids smells.

The platform's standard finishing is made of anti-slip diamond plate sheet metal. It may also be adapted for similar appearance to the surrounding pavement.

LIFTING SYSTEM -

The hydraulic lifting system has a partitioned section where rear-loading containers are located. The unit is designed to position containers at street level, thus facilitating downloading and emptying.

The hydraulic system has a scissor lift, enabling progressive lifting on both sides of the platform. The structure is raised through 2 hydraulic cylinders, providing overall resistance and stability. Equipped with two parachute safety valves that protect and prevent the equipment from falling during maintenance tasks.



CLICK ON THE ELEMENTS
FOR MORE INFORMATION



SIDE-LOADING SYSTEM

CONTENUR's Side-Loading underground containers system is conceived for busy public areas that already have a Side-Loading container collection system. These units may hold 1 or 2 side-loading containers with capacity of up to 3200 L.

The unit is operated through an independent hydraulic central station that is activated remotely. This remote control is compatible with rear-loading equipment, and may be used for both systems.

Furthermore, the unit is fitted with a light and sound safety system, which turns on when the system is in a downloading position.

DISPOSAL COLUMN –

CONTENUR has different disposal column models that adapt to each type of collected waste and are made of different materials: galvanised steel, stainless steel or polyethylene.

PEDESTRIAN PLATFORM –

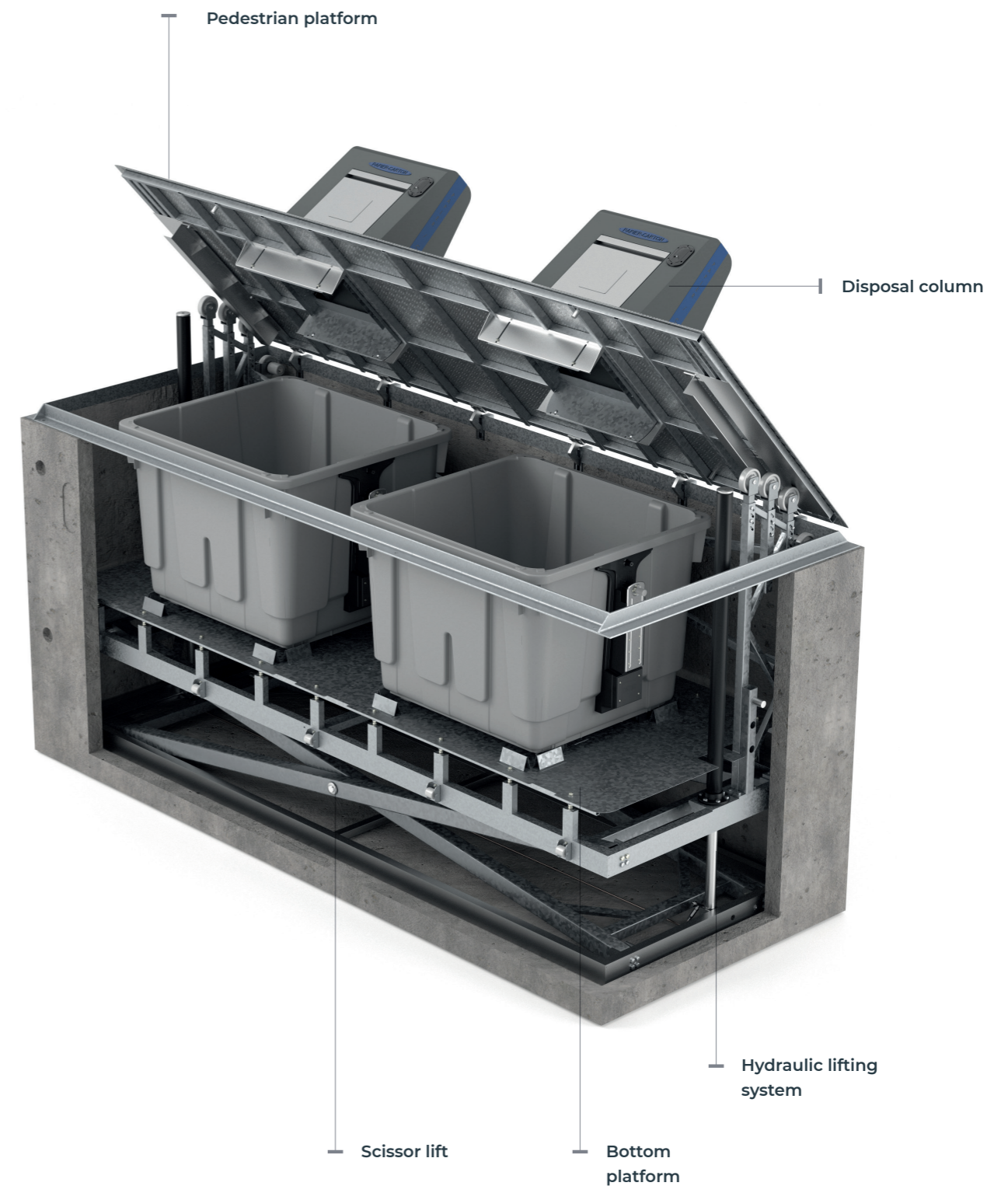
The upper or pedestrian platform bears the pavement weight and road traffic. It hinders incoming liquid or rainwater and avoids smells. The platform's standard finish is made of anti-slip diamond plate sheet metal, but may also be adapted to have a similar appearance to the surrounding pavement.

LIFTING SYSTEM –

The hydraulic lifting system has a bottom platform where the side-loading containers are located, of adjustable height. The platform has regulators to absorb any incline in the street, up to 6%.

The hydraulic system has a scissor lift to ensure progressive lifting on both sides of the platform. The structure is raised through 2 hydraulic cylinders, providing overall resistance and stability.

Equipped with parachute safety valves to protect and prevent the unit from falling during maintenance tasks.



CLICK ON THE ELEMENTS FOR MORE INFORMATION



DISPOSAL COLUMNS



DESIGN

Designed to totally fit into city landscapes, historic centres included.



CUSTOMISATION

Large customisation potential on the body of the disposal column, with different colours, logos, vinyl, informative campaigns, etc.



EFFICIENCY

CONTENUR's underground containers guarantee efficient collection and hygiene, as they are easily cleaned.



ACCESSIBILITY

Waste deposit opening at a height of 900 mm, making the unit fully accessible.



SAFETY

The safety of both citizen and cleaning and maintenance staff is guaranteed, as they are fitted with safety platforms.



CERTIFIED

They are certified under the highest quality and product standards. Productive process certified under UNE EN ISO 9001 and UNE EN ISO 14001 standards. Product certification under UNE EN 13071 standard.

Model	Height	Capacity	Volume Restrictor	Access opening (always in stainless steel)	Accessories	Material
Kheops	970 mm	40 L, 60 L, 80 L, 100 L, 120 L	Box with a restrictor	Organic waste / Packaging Paper and cardboard / Glass	Opening Ø200 mm / Pedal / Check valve / Filling control / Access control	Stainless steel / Hot galvanised steel + cataphoresis + paint
Evolution	952 mm	60L, 80 L, 100 L, 120 L	Single and double drum	Organic waste / Packaging Paper and cardboard / Glass	Opening Ø200 - 300mm / Pedal / Check valve / Filling control / Access control	Stainless steel / Hot galvanised steel + cataphoresis + paint
Austral	990 mm	80 L, 100 L, 120 L	Single drum	Organic waste / Packaging Paper and cardboard / Glass	Opening Ø200- 300mm / Check valve / Filling control	Galvanised or hot steel + cataphoresis + paint / stainless steel
Europa	1100 mm	60 L, 80 L	Single and double drum	Organic waste / Packaging Paper and cardboard / Glass	Opening Ø200 mm / Check valve / Filling control	Polyethylene / inside made of pre-galvanised steel
Milenium	1110 mm	60 L, 80 L	Single and double drum	Organic waste / Packaging Paper and cardboard / Glass	Opening Ø200 - 300mm / Check valve / Filling control	Polyethylene / inside made of pre-galvanised steel
Cite	1010 mm	—	N/A	Glass	Opening Ø200 mm / Filling control	Polyethylene / inside made of stainless steel

KHEOPS

- 970 mm height
- 40 L, 60 L, 80 L, 100 L, 120 L capacity
- Material Stainless steel / Galvanised steel

EVOLUTION

- 952 mm height
- 60 L, 80 L, 100 L, 120 L capacity
- Material Stainless steel / Galvanised steel

AUSTRAL

- 990 mm height
- 80 L, 100 L, 120 L capacity
- Material Galvanised steel / Stainless steel

EUROPA

- 1100 mm height
- 60 L, 80 L capacity
- Material Polyethylene

MILENIUM

- 1110 mm height
- 60 L, 80 L capacity
- Material Polyethylene

CITE

- 1010 mm height
- Material Polyethylene

CLICK ON THE ELEMENTS
FOR MORE INFORMATION



KHEOPS

DISPOSAL COLUMNS ▶

MODULAR AND ERGONOMIC

The Kheops disposal column is made of stainless steel for greater durability and anti-rust capacity. The disposal column's measurements ensure that it occupies little street space.

The product has been designed for its full integration into any surroundings, with a total height of 970 mm, making it user-friendly and fully accessible. It is specifically designed to host smart components, sensors and locks.

The disposal column may be customised with logos and waste instructions, to facilitate citizen recycling.

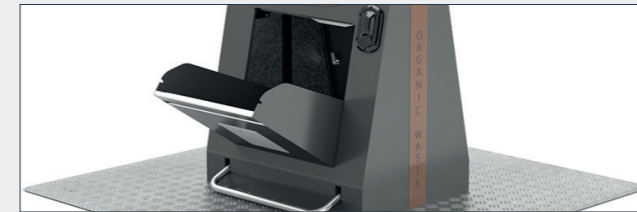
Also, waste identification plates may be added and different colours are available for each fraction. Upon request, the container may be fitted with a sensor to detect the filling level and to optimise collection routes.

Its modular and simplified design facilitates maintenance and the installation of spare parts. It consists of a professional door to facilitate access by large producers and authorised staff, if the container needs to be handled.

Thanks to its small number of components, it may be easily dismantled and maintenance is simple and efficient.

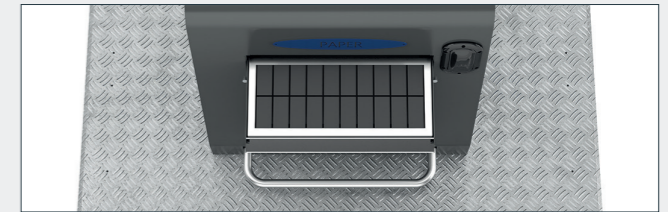


ACCESSORIES ▶



SINGLE BOX -

Box capacity of up to 120 L. Fitted with a shock absorber system to help opening and closing the door, in a noiseless manner



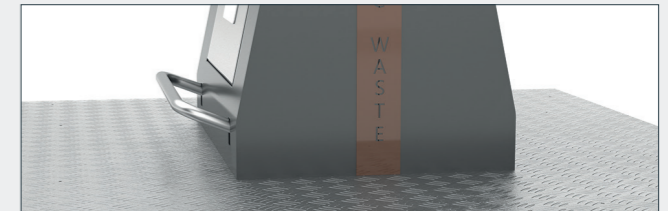
CHECK VALVE -

Integrated into the box, for the recycling of paper and packaging. Fitted with an anti-splash rubber protector. Size available: 510 x 200 mm



SELECTIVE OPENING -

Selective opening for glass recycling, integrated into the box. Available opening diameter 200 mm



PEDAL -

Made of galvanised steel. An ergonomic pedal to facilitate effortless disposal column access. More hygienic, with a contactless container



RESTRICTOR BOX -

To limit box capacity. An access control system may be incorporated upon request



ACCESS CONTROL -

Card-operated control for user access: log, frequency of use, amount of waste generated, etc.



CUSTOMISATION -

Waste identification plates may be easily added. Each disposal column may be customised with stickers, logos, emblems and instructions for each fraction

CLICK ON THE ELEMENTS
FOR MORE INFORMATION



EVOLUTION

DISPOSAL COLUMNS ▶

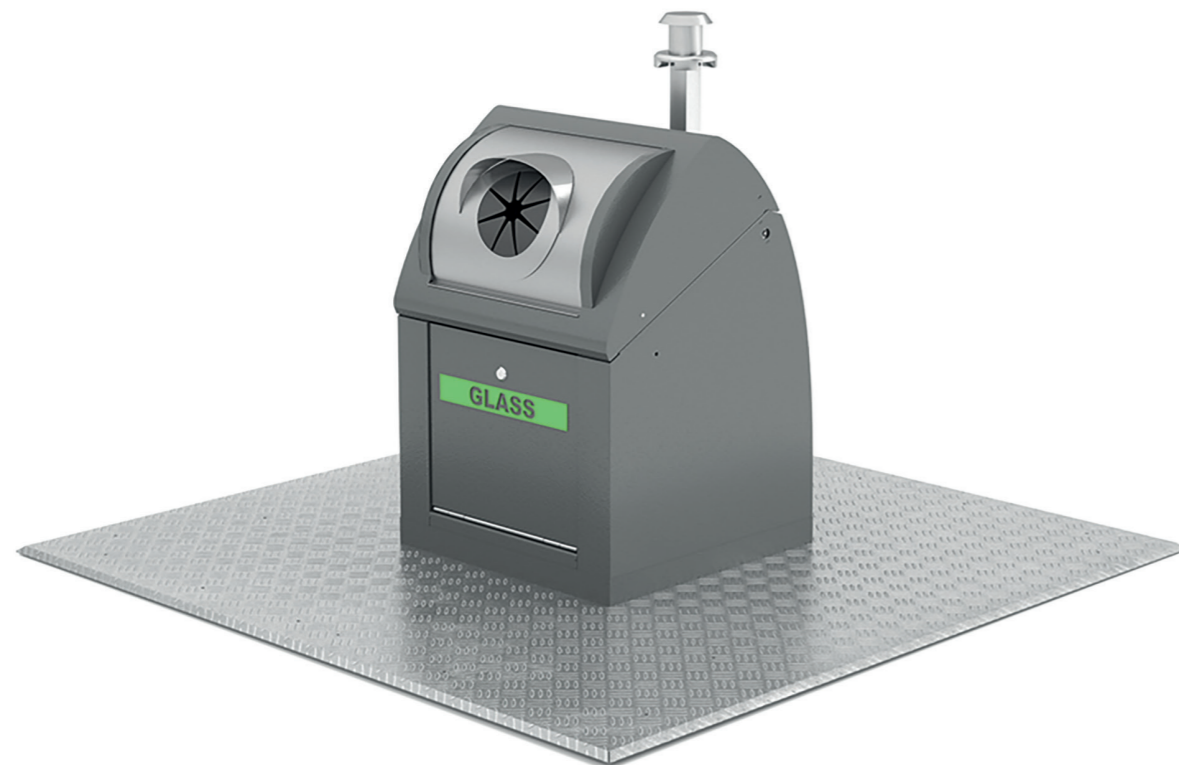
SOLIDITY AND DURABILITY

The Evolution disposal column is made of stainless steel. A finishing in stainless or hot-galvanised steel is available, treated through cataphoresis and painted. In both finishings, the disposal column is totally prepared to withstand any weather conditions. The disposal column's measurements make it fully accessible to all citizens, without taking up a lot of street space.

The disposal column may be customised with logos and waste instructions, facilitating citizen recycling.

The disposal column's simple and compact design makes it easy to dismantle in order to access all inside components. It consists of a professional door facilitating access to large producers (HORECA) and authorised staff, if the container needs to be handled. The container may be fitted with a sensor upon request, to detect the filling level and to optimise collection routes.

Thanks to its small number of parts, it is easy to dismantle and maintenance is simple and efficient.



ACCESSORIES ▶



DRUM -

Single or double drum available.
Possible capacity:

- ▶ 80 L (entry window 460 x 390 mm)
- ▶ 100 L (entry window 560 x 390 mm)
- ▶ 120 L (entry window 660 x 390 mm)



CHECK VALVE -

For the recycling of paper and packaging. Fitted with an anti-splash rubber protector. Sizes available:

- ▶ 340 x 162 mm
- ▶ 440 x 162 mm
- ▶ 540 x 162 mm



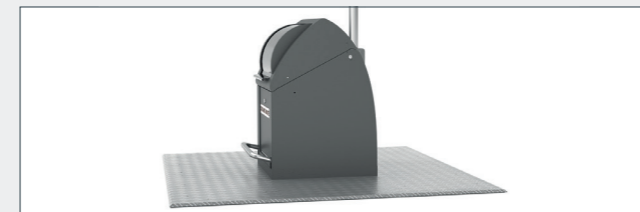
SELECTIVE OPENING -

Selective opening to recycle glass or biowaste.
Available opening diameter 200 and 300 mm



DOUBLE DRUM -

To limit drum capacity and avoid citizen access to container-deposited waste. It may be fitted with an access control system



PEDAL -

Made of galvanised steel. Ergonomic pedal to facilitate effortless disposal column access



ACCESS CONTROL -

Card-operated control of user access, generating a log, frequency of use and amount of generated waste



CUSTOMISATION -

Each disposal column may be customised with logos, emblems and instructions for each fraction

CLICK ON THE ELEMENTS
FOR MORE INFORMATION



AUSTRAL

DISPOSAL COLUMNS ▶

EFFICIENT MAINTENANCE

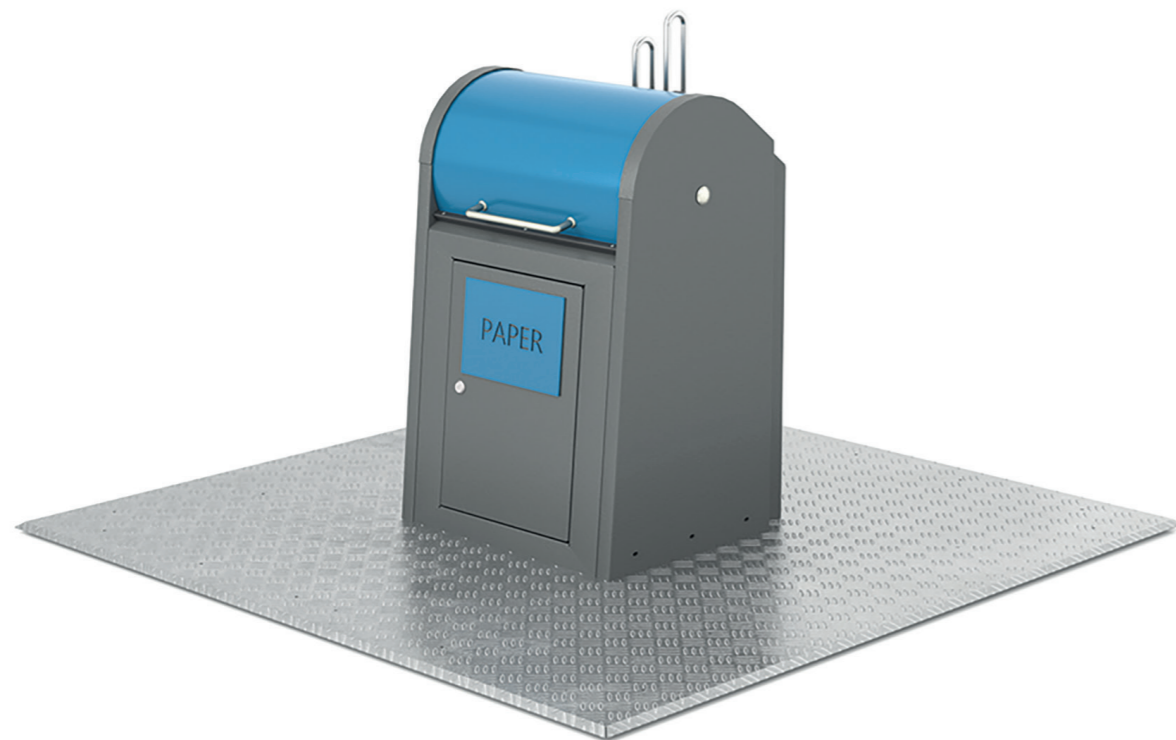
The Austral disposal column may be made of stainless or hot-galvanised steel, with cataphoresis treatment and painted.

All disposal column treatments ensure a professional finish, highly resistant to any site surroundings.

Each disposal column may be customised with a plate on the body, using logos and waste instructions, to facilitate citizen recycling. The container may be fitted with a sensor

upon request, to detect the filling level and to optimize collection routes.

Thanks to its simple design it is easily dismantled. It also has a professional door to facilitate access by large producers (HORECA) and authorised staff, if the container needs to be handled.



ACCESSORIES ▶



SINGLE DRUM –

Fitted with a counterweight system to help opening and closing of the door. Available capacity:

- ▶ 80 L (entry window 570 x 360 mm)
- ▶ 100 L (entry window 700 x 360 mm)



SELECTIVE OPENING –

Selective opening to recycle glass and biowaste. Fitted with an anti-splash rubber protector. Available opening diameter 200 and 300 mm



CHECK VALVE

For the recycling of paper and packaging. Sizes available:

- ▶ 80 L (entry window 570 x 162 mm)
- ▶ 100 L (entry window 700 x 162 mm)
- ▶ 120 L (entry window 900 x 162 mm)



CUSTOMISATION –

Each disposal column may be customised with logos, emblems and instructions for each fraction

CLICK ON THE ELEMENTS
FOR MORE INFORMATION



EUROPA

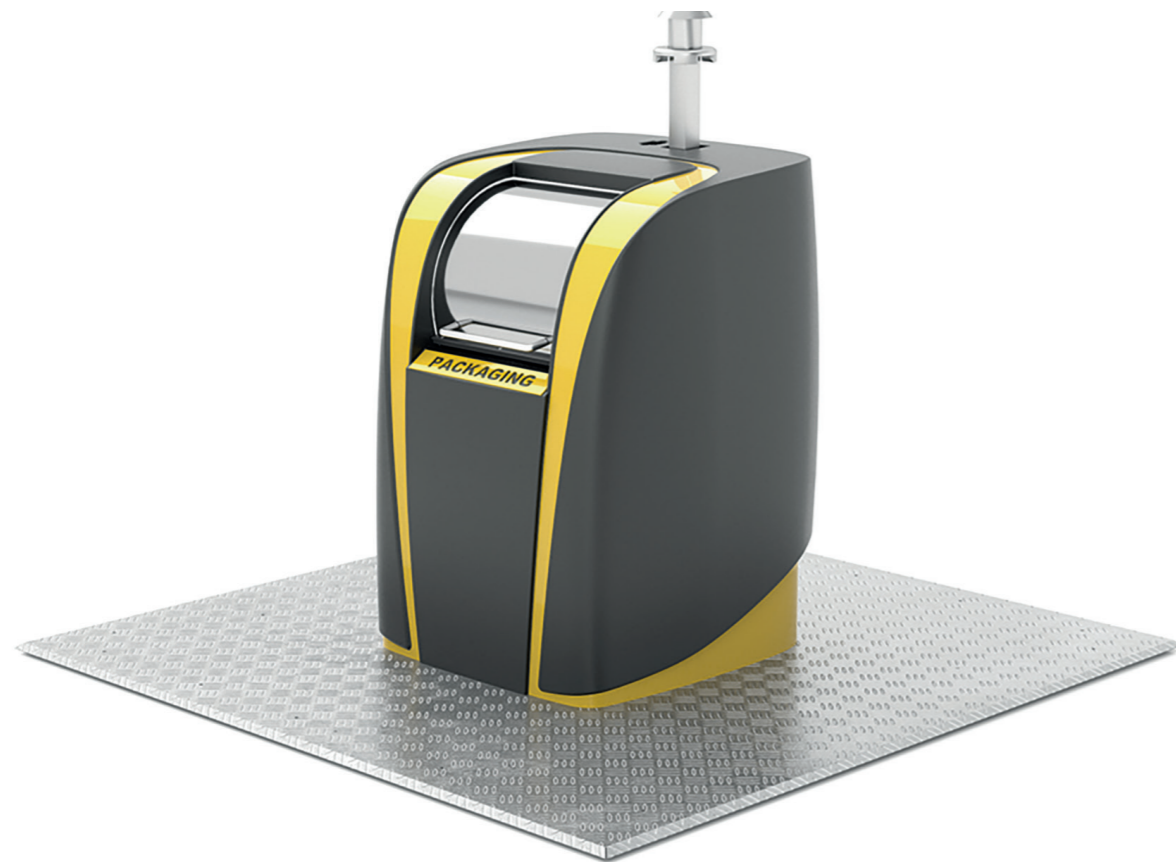
DISPOSAL COLUMNS ▶

DURABILITY AND EASY INSTALLATION

The Europe disposal column is made of high-density polyethylene. It has an inside structure made of galvanised steel and a drum manufactured in stainless steel, with 60 and 80 litre capacity. It has been designed with a textured finish to repel stickers or graffiti.

Each disposal column may be customised with different colours, depending on the type of waste recycled. It may also be customised at the access opening with an identification plate.

Thanks to its simplified design, it is easily dismantled and interchangeable.



ACCESSORIES ▶



SINGLE DRUM -

Fitted with a counterweight system to help opening and closing of the door. Available capacity:

- ▶ 80 L (entry window 415 x 385 mm)



DOUBLE DRUM -

This allows drum capacity to be limited, avoiding citizen access to container-deposited waste. It may be fitted with an access control system



SELECTIVE OPENING -

Selective opening to recycle glass. Available opening diameter 200 mm



CHECK VALVE -

Used to recycle paper and packaging. Fitted with an anti-splash rubber protector



CUSTOMISATION -

Each disposal column may be differentiated by colour depending on the type of waste to recycle. The access opening may be customised with an identification plate

CLICK ON THE ELEMENTS
FOR MORE INFORMATION



MILENIUM

DISPOSAL COLUMNS ▶

RESISTANT AND EASILY CLEANED

The Milenium disposal column is made of high-density polyethylene. It has an internal structure made of galvanised steel and a drum manufactured in stainless steel, with capacity of 60 and 80 litres.

The disposal column may be customised with an identification plate in the access opening, depending on the type of waste to recycle.

Thanks to its simple design it is easily dismantled and exchangeable.



ACCESSORIES ▶



SINGLE DRUM -

Fitted with a counterweight system to help opening and closing of the door. Available capacity:

- ▶ 60 L with a restrictor (entry window 415 x 385 mm)
- ▶ 80 L (entry window 415 X 385 mm)



DOUBLE DRUM -

Selective opening to recycle glass or biowaste, fitted with an anti-splash rubber protector. Available opening diameters: 200 and 300 mm



SELECTIVE OPENING -

Selective opening to recycle glass or biowaste, fitted with an anti-splash rubber protector. Available opening diameters: 200 and 300 mm



CHECK VALVE -

Used to recycle paper and packaging. Fitted with an anti-splash rubber protector



CUSTOMISATION -

The access opening may be customised with an identification plate

CLICK ON THE ELEMENTS
FOR MORE INFORMATION



CITE

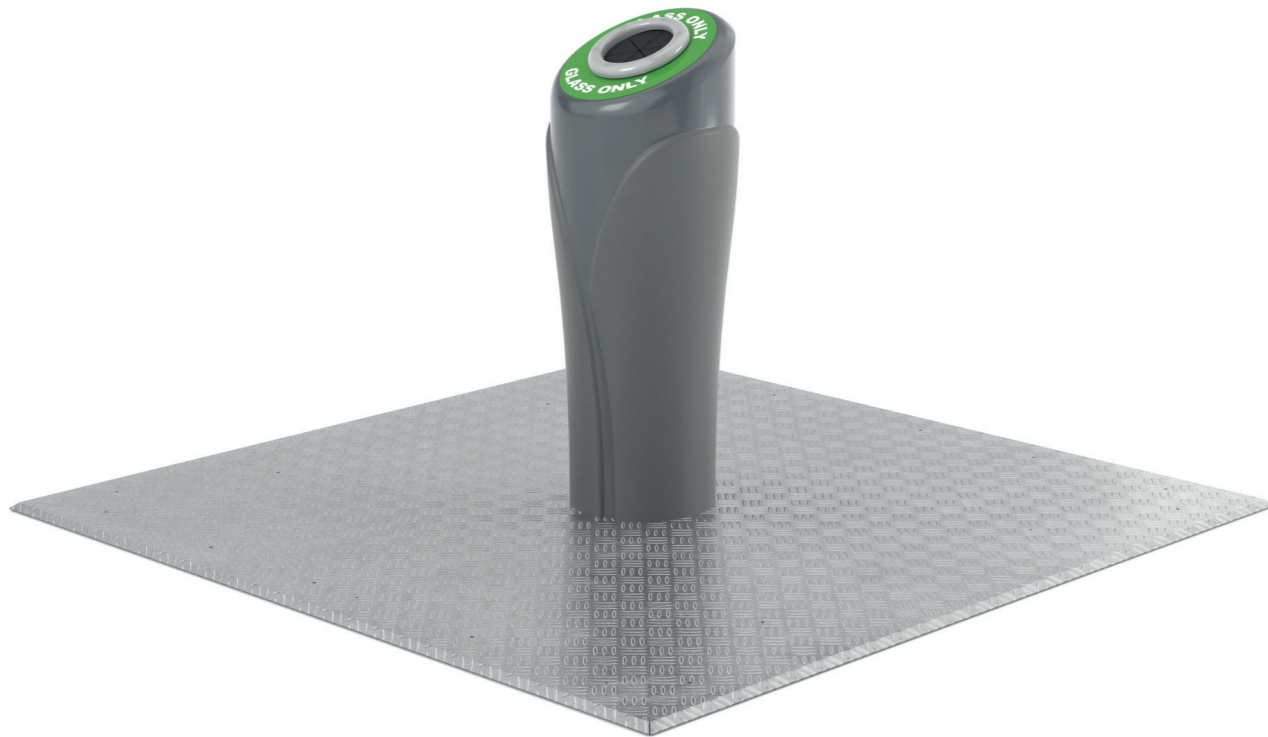
DISPOSAL COLUMNS ►

OPTIMISATION AND AESTHETICS

The Cite disposal column is made of high-density polyethylene. It has been exclusively designed for the recycling of glass. Upon request, the Cite disposal column may be fitted with an internal structure of stainless steel.

The opening mouth has an anti-splash rubber protector and is trimmed. It may be customised with stickers displaying logos and instructions to facilitate citizen recycling.

Highly modular, it is made up of a reduced number of parts and components that can be easily exchange on-site, making its maintenance fast and efficient.



**www.
contenur.
com/en**



EN: MK23CORP.CAT.ENG.VI