





**CONTENUR**

Torneros 3  
Pol. In. Los Ángeles  
28906 Getafe  
Madrid, Spain

[www.contenur.com/en](http://www.contenur.com/en)

PRODUCT  
**CATALOGUE**

CLICK ON CERTAIN ITEMS  
TO LEARN MORE.



# UNDERGROUND CONTAINERS

## Innovating and safe solutions

**CONTENUR's** underground containers have a recognisable **design, resistance and versatility.**

Designed to totally fit into city landscapes, historic centres included, as they are conceived for large storage capacity using the least possible space in the public thoroughfare. Modular and versatile, with potential to combine plastic and metal solutions.

Safety is guaranteed as they are fitted with safety platforms, whilst remaining environmentally-friendly.

Designed to guarantee efficient collection and hygiene, as they are very easily cleaned. Underground containers allow waste to be stored below the surface, helping reduce smells, avoiding access to the waste and reducing vandalism.



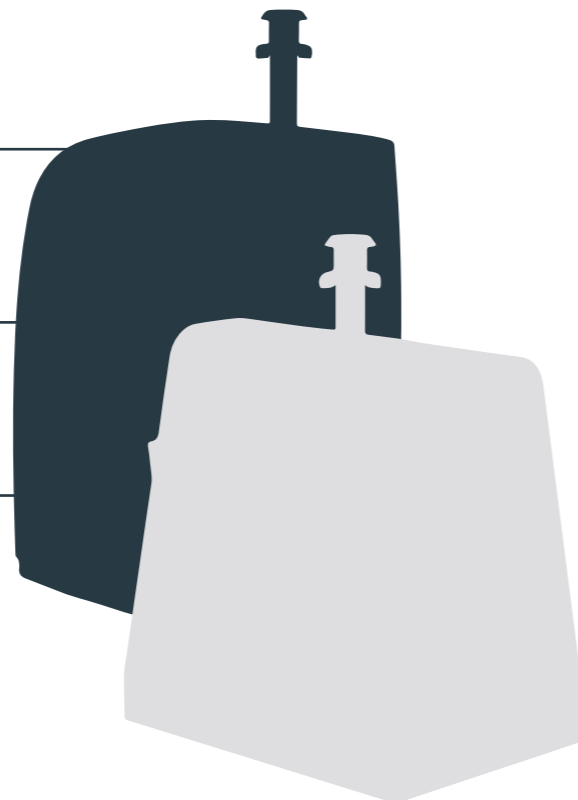
RESISTANCE



VERSATILITY



ACCESSIBILITY



UNDERGROUND CONTAINERS

CLICK ON CERTAIN ITEMS  
TO LEARN MORE.



# CRANE-LIFT SYSTEM

Our Crane-Lift underground containers are conceived to improve waste downloading and to reduce maintenance, thanks to their small number of parts. This system helps citizens in their waste deposit task, and is accessible to all users.

Product certified under standards UNE EN 13071 1,2,3:2008, awarded by an external certifying company and validated by ENAC (Urban Fixture Product Standards).

## LIFTING SYSTEM –

An anti-rust metal lifting system, available for different collection systems: ordinary hook, double hook, triple hook and Kinshofer.

## DISPOSAL COLUMN –

The disposal column is used to deposit the waste.

**CONTENUR** offers a wide range of different models that adapt to each type of waste collection. Manufactured in different materials: galvanised steel, stainless steel and polyethylene.

## PEDESTRIAN PLATFORM –

A pedestrian platform is manufactured in hot-galvanised anti-slip diamond plate sheet metal, or with a double cover, for mounting on the pavement.

## CONTAINER –

The following volumes are available for this underground system: 3m<sup>3</sup>, 4m<sup>3</sup> and 5m<sup>3</sup>.

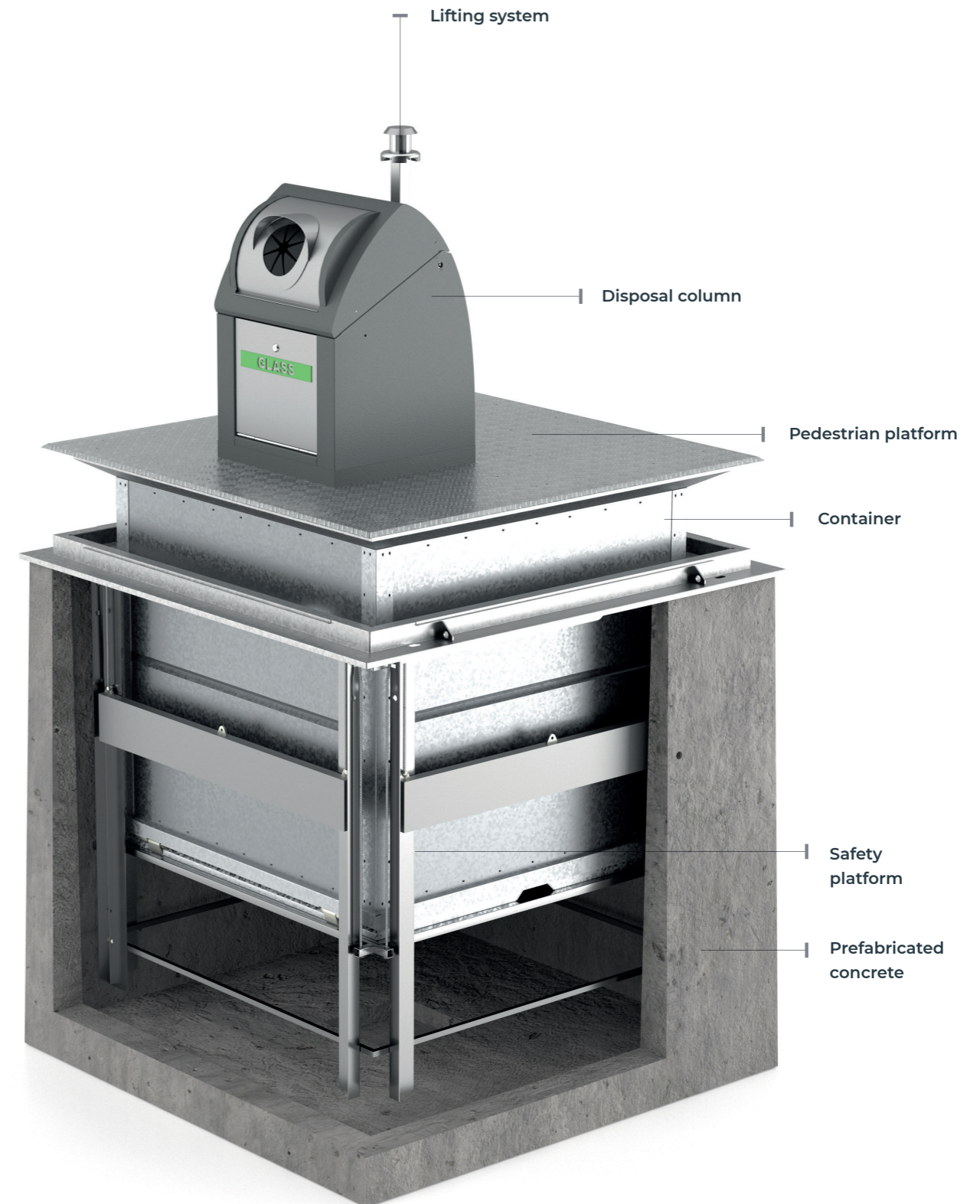
All underground containers are made of galvanised steel or PEHD.

## SAFETY PLATFORM –

The system includes a safety platform made of galvanised steel, which lifts automatically when the container is in a downloading position. The platform avoid falls at a height, whether by downloading or equipment maintenance staff, or citizens.

## PREFABRICATED CONCRETE –

Manufactured according to standard EN-206-1, as a single reinforced and highly resistant concrete block. Prefabricated concrete is highly resistant to earth forces, and is totally airtight and waterproof.



CLICK ON CERTAIN ITEMS  
TO LEARN MORE.



# HYDRAULIC SYSTEM

All Rear-Loading underground containers are conceived for city centres, avoiding the impact of visible waste and generating cleaner and open space. They may host up to 2, 3 or 4 Rear-Loading containers with capacity of up to 1100 L.

**CONTENUR's** RLSs are characteristically highly resistant and easy to maintain. They have been designed to withstand continued use in a hostile environment and have a useful life of more than 15 years. RLS equipment may be operated through a fast collector truck or an independent hydraulic central system.

## DISPOSAL COLUMN -

The disposal column is where users deposit the waste. **CONTENUR** offers a large number of different models, adapted to each type of waste collection and manufactured in different materials: galvanised steel, stainless steel or polyethylene.

## PEDESTRIAN PLATFORM -

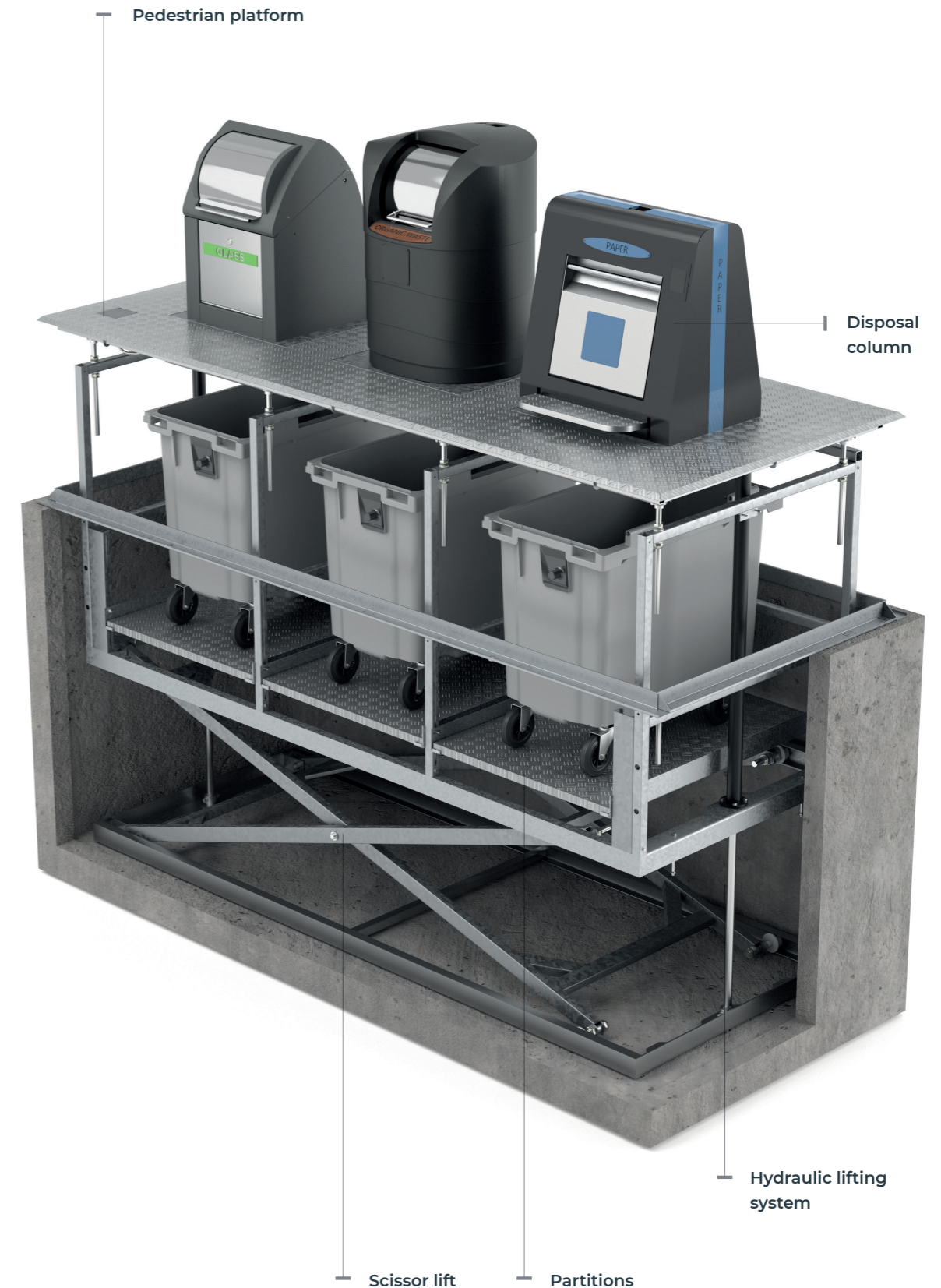
This structural component bears pavement weight and road traffic. It hinders incoming liquid or rainwater and avoids smells.

The platform's standard finishing is made of anti-slip diamond plate sheet metal. It may also be adapted for similar appearance to the surrounding pavement.

## LIFTING SYSTEM -

The hydraulic lifting system has a partitioned section where rear-loading containers are located. The unit is designed to position containers at street level, thus facilitating downloading and emptying.

The hydraulic system has a scissor lift, enabling progressive lifting on both sides of the platform. The structure is raised through 2 hydraulic cylinders, providing overall resistance and stability. Equipped with two parachute safety valves that protect and prevent the equipment from falling during maintenance tasks.



CLICK ON CERTAIN ITEMS  
TO LEARN MORE.



# SIDE-LOADING SYSTEM

**CONTENUR's** Side-Loading underground containers system is conceived for busy public areas that already have a Side-Loading container collection system. These units may hold 1 or 2 side-loading containers with capacity of up to 3200 L.

The unit is operated through an independent hydraulic central station that is activated remotely. This remote control is compatible with rear-loading equipment, and may be used for both systems.

Furthermore, the unit is fitted with a light and sound safety system, which turns on when the system is in a downloading position.

## DISPOSAL COLUMN –

**CONTENUR** has different disposal column models that adapt to each type of collected waste and are made of different materials: galvanised steel, stainless steel or polyethylene.

## PEDESTRIAN PLATFORM –

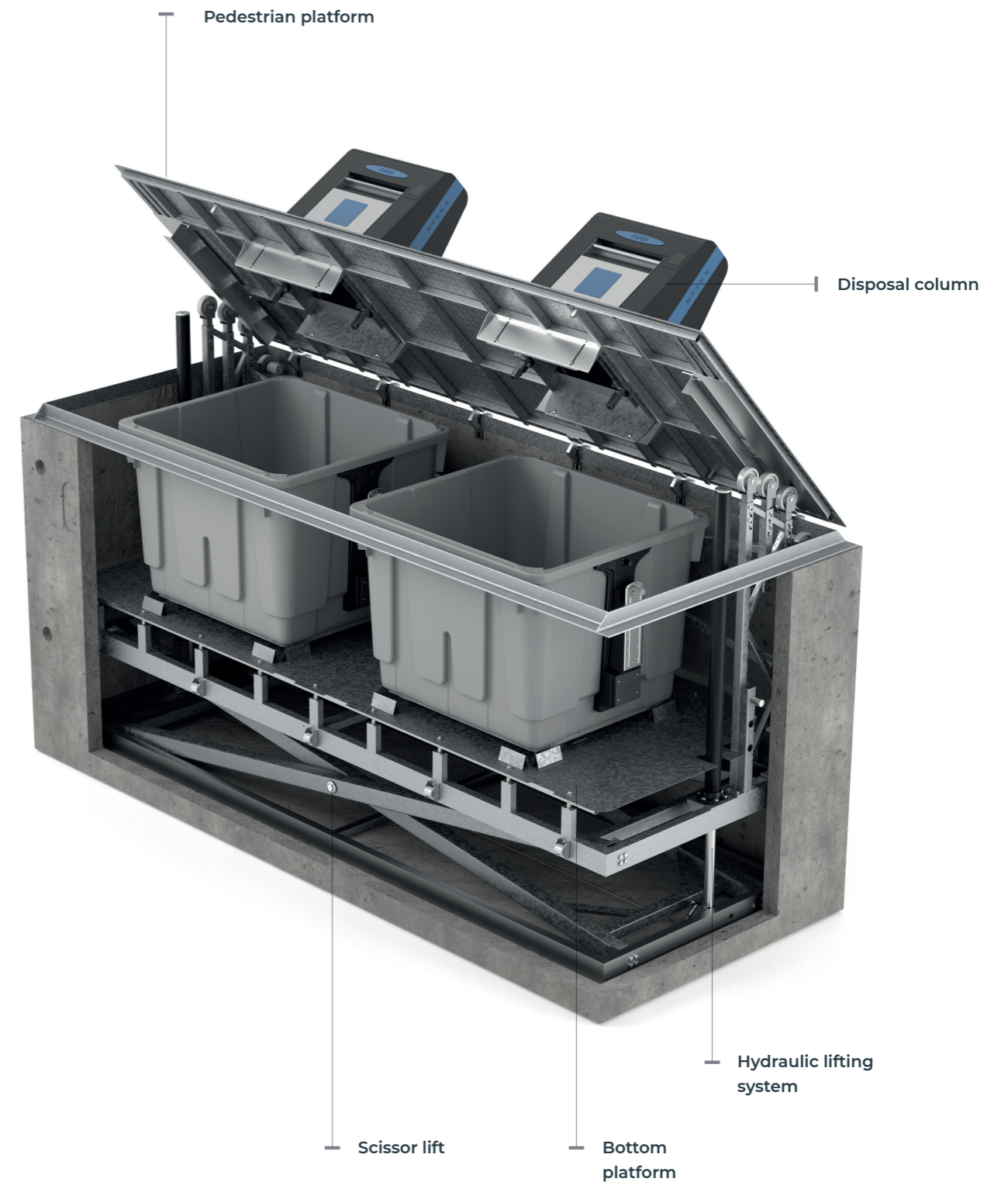
The upper or pedestrian platform bears the pavement weight and road traffic. It hinders incoming liquid or rainwater and avoids smells. The platform's standard finish is made of anti-slip diamond plate sheet metal, but may also be adapted to have a similar appearance to the surrounding pavement.

## LIFTING SYSTEM –

The hydraulic lifting system has a bottom platform where the side-loading containers are located, of adjustable height. The platform has regulators to absorb any incline in the street, up to 6%.

The hydraulic system has a scissor lift to ensure progressive lifting on both sides of the platform. The structure is raised through 2 hydraulic cylinders, providing overall resistance and stability.

Equipped with parachute safety valves to protect and prevent the unit from falling during maintenance tasks.



CLICK ON CERTAIN ITEMS  
TO LEARN MORE.



# DISPOSAL COLUMNS



### DESIGN

Designed to totally fit into city landscapes, historic centres included.



### CUSTOMISATION

Large customisation potential on the body of the disposal column, with different colours, logos, vinyl, informative campaigns, etc.



### EFFICIENCY

**CONTENUR's** underground containers guarantee efficient collection and hygiene, as they are easily cleaned.



### ACCESSIBILITY

Waste deposit opening at a height of 900 mm, making the unit fully accessible.



### SAFETY

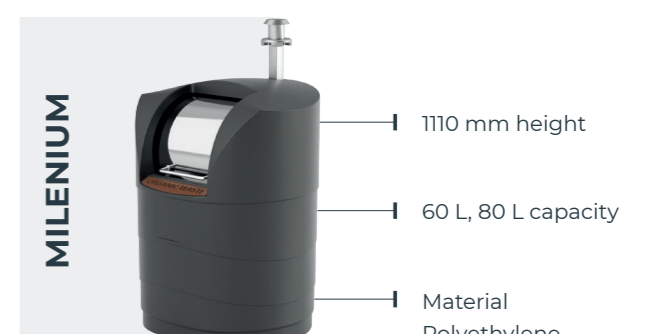
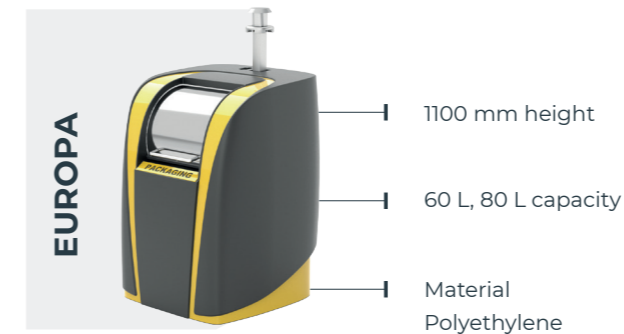
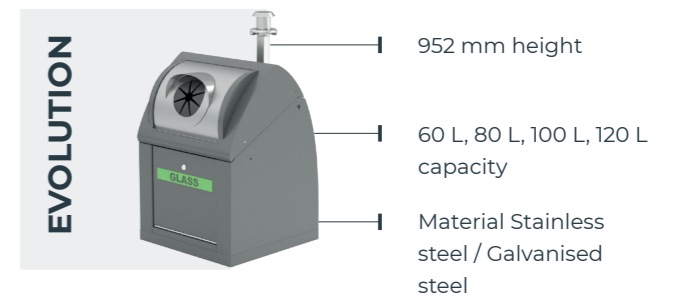
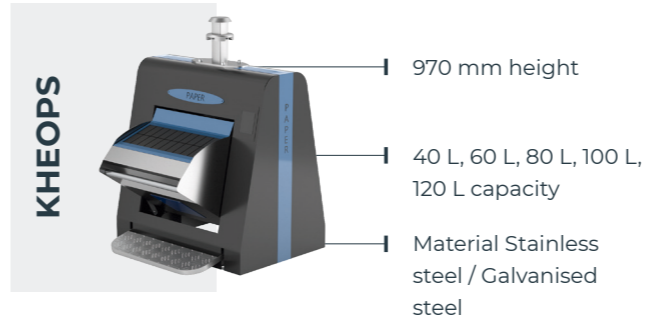
The safety of both citizen and cleaning and maintenance staff is guaranteed, as they are fitted with safety platforms.



### CERTIFIED

They are certified under the highest quality and product standards. Productive process certified under UNE EN ISO 9001 and UNE EN ISO 14001 standards. Product certification under UNE EN 13071 standard.

Model	Height	Capacity	Volume Restrictor	Access opening (always in stainless steel)	Accessories	Material
<b>Kheops</b>	970 mm	40 L, 60 L, 80 L, 100 L, 120 L	Box with a restrictor	Organic waste / Packaging Paper and cardboard / Glass	Opening Ø200 mm / Pedal / Check valve / Filling control / Access control	Stainless steel / Hot galvanised steel + cataphoresis + paint
<b>Evolution</b>	952 mm	60L, 80 L, 100 L, 120 L	Single and double drum	Organic waste / Packaging Paper and cardboard / Glass	Opening Ø200 - 300mm / Pedal / Check valve / Filling control / Access control	Stainless steel / Hot galvanised steel + cataphoresis + paint
<b>Europa</b>	1100 mm	60 L, 80 L	Single and double drum	Organic waste / Packaging Paper and cardboard / Glass	Opening Ø200 mm / Check valve / Filling control	Polyethylene / inside made of pre-galvanised steel
<b>Milenium</b>	1110 mm	60 L, 80 L	Single and double drum	Organic waste / Packaging Paper and cardboard / Glass	Opening Ø200 - 300mm / Check valve / Filling control	Polyethylene / inside made of pre-galvanised steel
<b>Minim</b>	1101 mm		No limit	SUW / Packaging / Paper and cardboard / Glass	Opening Ø200 mm / Opening Ø380 / Check valve	Stainless steel / Galvanised steel + primer + paint



CLICK ON CERTAIN ITEMS  
TO LEARN MORE.



# KHEOPS

DISPOSAL COLUMNS ▶

**MODULAR AND ERGONOMIC**

The Kheops disposal column is made of stainless steel for greater durability and anti-rust capacity. The disposal column's measurements ensure that it occupies little street space.

The product has been designed for its full integration into any surroundings, with a total height of 970 mm, making it user-friendly and fully accessible. It is specifically designed to host smart components, sensors and locks.

The disposal column may be customised with logos and waste instructions, to facilitate citizen recycling.

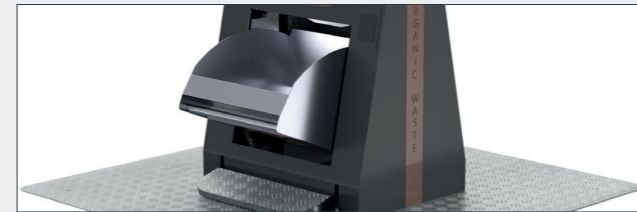
Also, waste identification plates may be added and different colours are available for each fraction. Upon request, the container may be fitted with a sensor to detect the filling level and to optimise collection routes.

Its modular and simplified design facilitates maintenance and the installation of spare parts. It consists of a professional door to facilitate access by large producers and authorised staff, if the container needs to be handled.

Thanks to its small number of components, it may be easily dismantled and maintenance is simple and efficient.

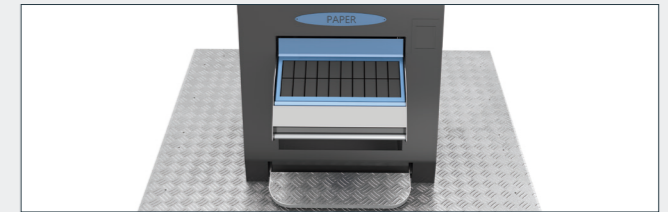


## ACCESSORIES ▶



### SINGLE BOX -

Box capacity of up to 120 L. Fitted with a shock absorber system to help opening and closing the door, in a noiseless manner



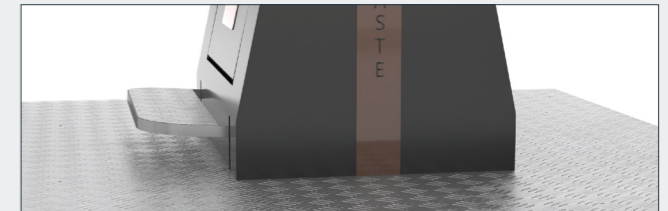
### CHECK VALVE -

Integrated into the box, for the recycling of paper and packaging. Fitted with an anti-splash rubber protector. Size available: 510 x 200 mm



### SELECTIVE OPENING -

Selective opening for glass recycling, integrated into the box. Available opening diameter 200 mm



### PEDAL -

Made of galvanised steel. An ergonomic pedal to facilitate effortless dropbox access. More hygienic, with a contactless container



### RESTRICTOR BOX -

To limit box capacity. An access control system may be incorporated upon request



### ACCESS CONTROL -

Card-operated control for user access: log, frequency of use, amount of waste generated, etc.



### CUSTOMISATION -

Waste identification plates may be easily added. Each disposal column may be customised with stickers, logos, emblems and instructions for each fraction



### FRONT PAPER ACCESS (WITHOUT DRAWER) -

- ▶ Standard dimensions: 485 x 162 mm
- ▶ XL dimensions: 854 x 166 mm

CLICK ON CERTAIN ITEMS  
TO LEARN MORE.



# EVOLUTION

## DISPOSAL COLUMNS ▶

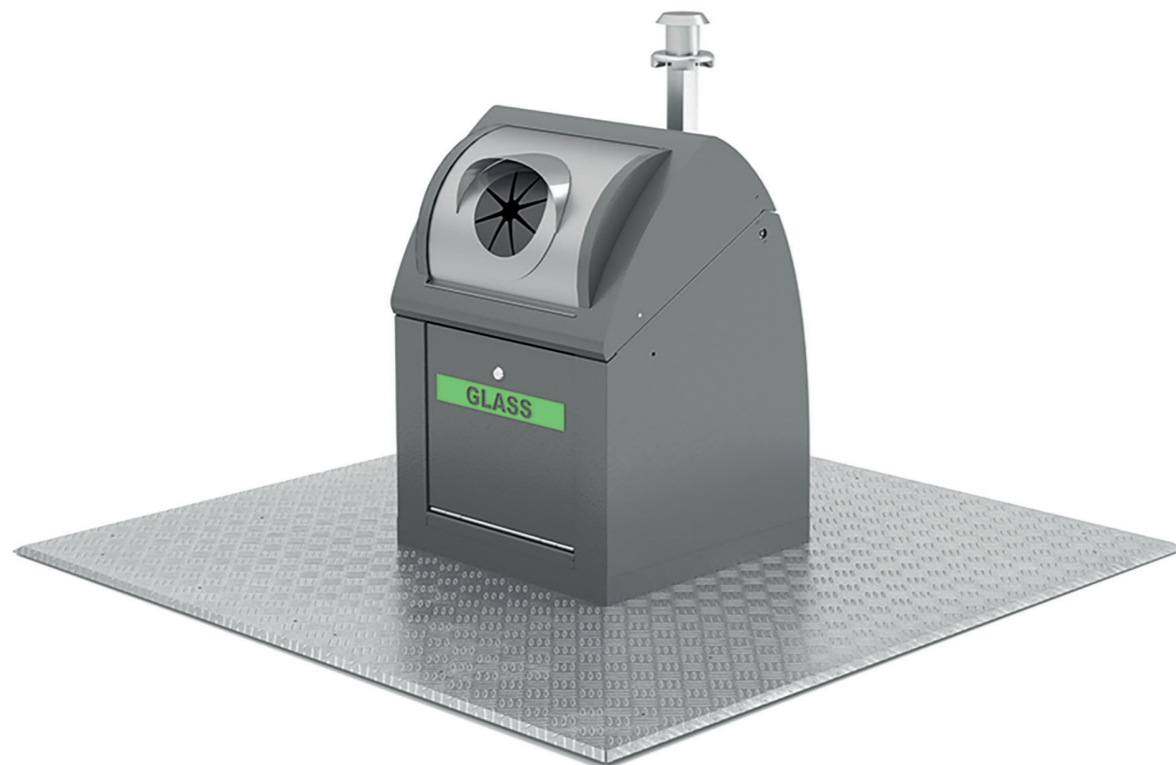
### SOLIDITY AND DURABILITY

The Evolution disposal column is made of stainless steel. A finishing in stainless or hot-galvanised steel is available, treated through cataphoresis and painted. In both finishings, the disposal column is totally prepared to withstand any weather conditions. The disposal column's measurements make it fully accessible to all citizens, without taking up a lot of street space.

The disposal column may be customised with logos and waste instructions, facilitating citizen recycling.

The disposal column's simple and compact design makes it easy to dismantle in order to access all inside components. It consists of a professional door facilitating access to large producers (HORECA) and authorised staff, if the container needs to be handled. The container may be fitted with a sensor upon request, to detect the filling level and to optimise collection routes.

Thanks to its small number of parts, it is easy to dismantle and maintenance is simple and efficient.



## ACCESSORIES ▶



### DRUM -

Single or double drum available.  
Possible capacity:

- ▶ 80 L (entry window 460 x 390 mm)
- ▶ 100 L (entry window 560 x 390 mm)
- ▶ 120 L (entry window 660 x 390 mm)



### CHECK VALVE -

For the recycling of paper and packaging. Fitted with an anti-splash rubber protector. Sizes available:

- ▶ 340 x 162 mm
- ▶ 440 x 162 mm
- ▶ 540 x 162 mm



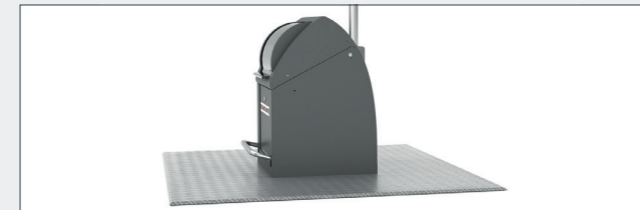
### SELECTIVE OPENING -

Selective opening to recycle glass or biowaste.  
Available opening diameter 200 and 300 mm



### DOUBLE DRUM -

To limit drum capacity and avoid citizen access to container-deposited waste. It may be fitted with an access control system



### PEDAL -

Made of galvanised steel. Ergonomic pedal to facilitate effortless disposal column access



### ACCESS CONTROL -

Card-operated control of user access, generating a log, frequency of use and amount of generated waste



### CUSTOMISATION -

Each disposal column may be customised with logos, emblems and instructions for each fraction

CLICK ON CERTAIN ITEMS  
TO LEARN MORE.



# EUROPA

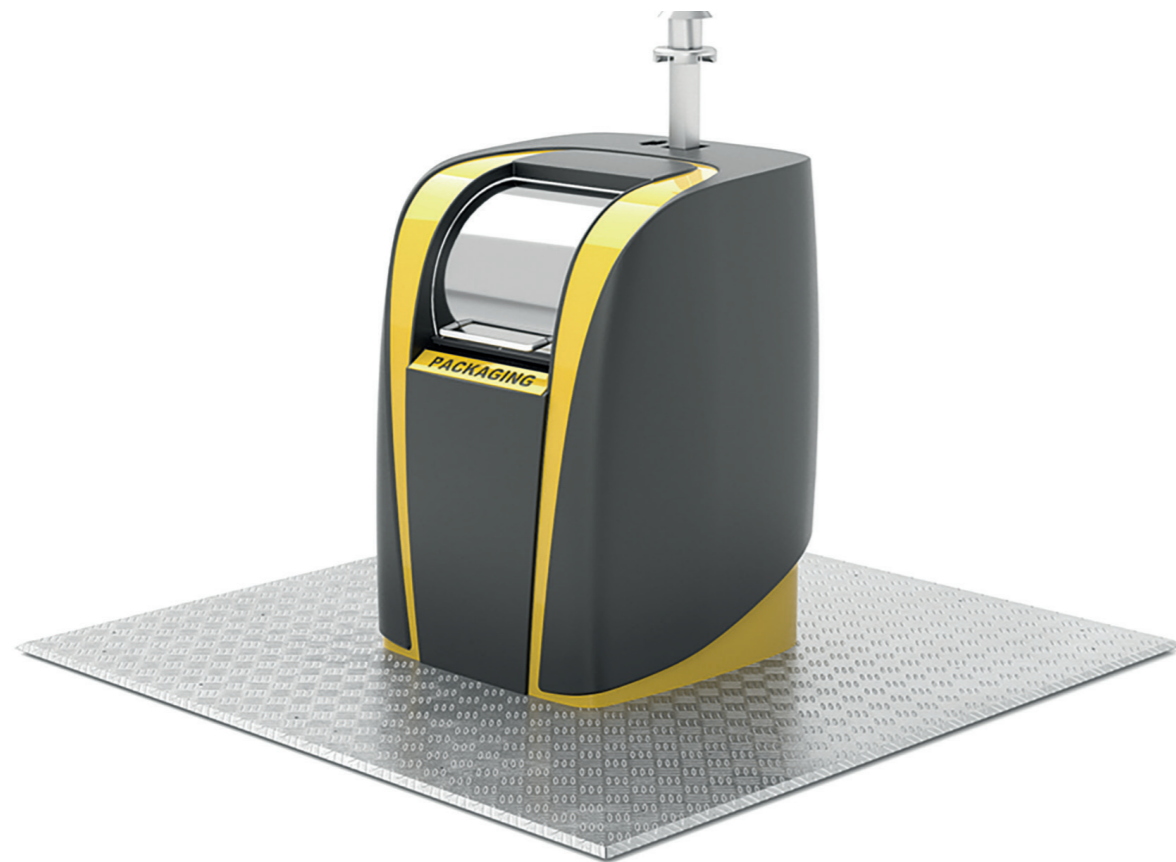
## DISPOSAL COLUMNS ▶

### DURABILITY AND EASY INSTALLATION

The Europe disposal column is made of high-density polyethylene. It has an inside structure made of galvanised steel and a drum manufactured in stainless steel, with 60 and 80 litre capacity. It has been designed with a textured finish to repel stickers or graffiti.

Each disposal column may be customised with different colours, depending on the type of waste recycled. It may also be customised at the access opening with an identification plate.

Thanks to its simplified design, it is easily dismantled and interchangeable.



## ACCESSORIES ▶



### SINGLE DRUM -

Fitted with a counterweight system to help opening and closing of the door. Available capacity:

- ▶ 80 L ( entry window 415 x 385 mm)



### DOUBLE DRUM -

This allows drum capacity to be limited, avoiding citizen access to container-deposited waste. It may be fitted with an access control system



### SELECTIVE OPENING -

Selective opening to recycle glass. Available opening diameter 200 mm



### CHECK VALVE -

Used to recycle paper and packaging. Fitted with an anti-splash rubber protector



### CUSTOMISATION -

Each disposal column may be differentiated by colour depending on the type of waste to recycle. The access opening may be customised with an identification plate

CLICK ON CERTAIN ITEMS  
TO LEARN MORE.



# MILENIUM

DISPOSAL COLUMNS ▶

**RESISTANT AND EASILY CLEANED**

The Milenium disposal column is made of high-density polyethylene. It has an internal structure made of galvanised steel and a drum manufactured in stainless steel, with capacity of 60 and 80 litres.

The disposal column may be customised with an identification plate in the access opening, depending on the type of waste to recycle.

Thanks to its simple design it is easily dismantled and exchangeable.



## ACCESSORIES ▶



### SINGLE DRUM -

Fitted with a counterweight system to help opening and closing of the door. Available capacity:

- ▶ 60 L with a restrictor (entry window 415 x 385 mm)
- ▶ 80 L (entry window 415 X 385 mm)



### DOUBLE DRUM -

Selective opening to recycle glass or biowaste, fitted with an anti-splash rubber protector. Available opening diameters: 200 and 300 mm



### SELECTIVE OPENING -

Selective opening to recycle glass or biowaste, fitted with an anti-splash rubber protector. Available opening diameters: 200 and 300 mm



### CHECK VALVE -

Used to recycle paper and packaging. Fitted with an anti-splash rubber protector



### CUSTOMISATION -

The access opening may be customised with an identification plate

CLICK ON CERTAIN ITEMS  
TO LEARN MORE.



# MINIM

## DISPOSAL COLUMNS ▶

### MINIMALISM AND OPTIMISATION

The Minim disposal column can be manufactured in stainless steel or galvanised steel with primer and epoxy paint. Galvanised steel offers three different finishes in three different shades of matt grey.

The simplicity of its design and ease of assembly and maintenance make it a functional and economic disposal column, without losing out on quality and resistance.

The disposal column is designed with different independent parts, which allows for easy assembly and maintenance and replacement of parts in case of damage.

The opening and closing system uses a hinged lid and a gas shock absorber. As a result, it closes smoothly, quietly and with no risk of entrapment for the user. It also has a protective rubber on the edge of the opening that guarantees a silent closing.

The disposal column can be customised with logos and waste instructions to make recycling easier for citizens.



## ACCESSORIES ▶



### STANDARD OPENING –

Available dimensions:  
▶ 405 x 556 mm



### PAPER OPENING –

Designed for paper recycling.  
Available dimensions:  
▶ 470 x 165 mm



### GLASS OPENING –

Selective opening for glass recycling  
Available diameter 200 mm



### CIRCULAR OPENING –

Selective opening for the recycling of packaging  
Available diameter 380 mm



### CUSTOMISATION –

The entire surface of the disposal column can be customised with logos, emblems and recycling instructions using vinyl, polycarbonate or other materials



**www.  
contenur.  
com/en**

MK26CORP.CAT.ENEXP.V1