

## REAR LOADING CONTAINERS – 4 WHEELS

# Clinical waste containers

### Operating Instructions for Clinical Waste Containers or ADR - C770/C1100 Litres according to EN 840- 2 and UN standards - Large Packaging (50H)



#### INSTRUCTIONS

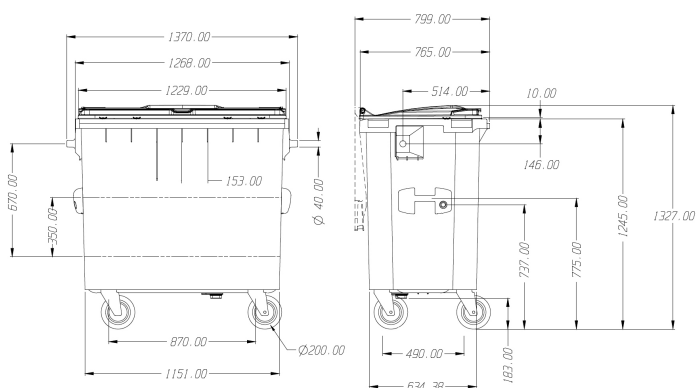
- These operating instructions contain useful information for the user. The information is necessary for the proper handling of ADR waste containers.
- To obtain more information about the C770 and C1100 litres, please consult the CONTENUR website, as well as the EN 840-2, EN 840-5, EN 840-6 standards and the certificates in accordance with the UN "Large packaging" standard that correspond to this type of container.
- Certified containers for the storage and transportation of infectious waste materials class 6.2 - subdivision I3 for clinical waste.
- The containers are designated for the collection of ADR waste (according to EN 3291 standard) for which legal transport regulations apply (see applicable national legislation, ADR Regulations, RID Regulations, IMDG Amendment).

**770 L  
1100 L**  
Capacity

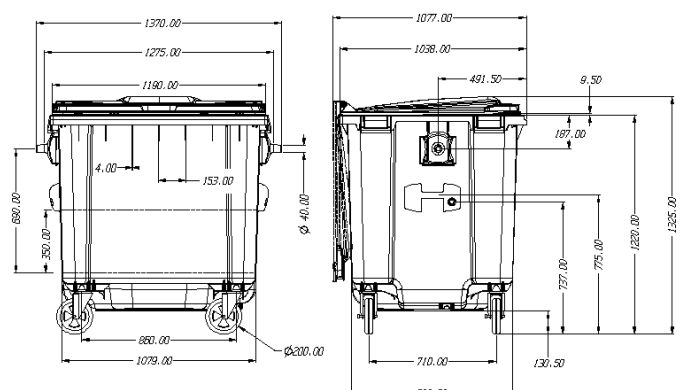
**C770: 308 Kg  
C1100: 440 Kg**  
Nominal load

**C770: 160/200 mm  
C1100: 200 mm**  
Wheel diameter

#### C770 L



#### C1100 L



## REAR LOADING CONTAINERS – 4 WHEELS

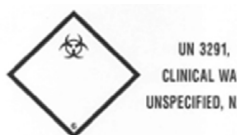
# Clinical waste containers

### UN personalisation and ADR waste marking

- The containers have been certified according to the UN standard for Large Packagings and are marked with the following registration: C770 / C1100 UN 50H / Y / 05 / 21 / GB / SE-0015 / Contenur / 0 / 320

50H =	Rigid plastic container
Y =	Packing groups II and III (II corrosive substances & III slightly corrosive substances)
05 =	Month of manufacture
21 =	Year of manufacture
E =	Country of Manufacture (International Vehicle Registration Code)
SE – 0015 =	Certificate identification number
Contenur =	Manufacturer
0 =	Not stackable
320 =	Maximum Gross weight

- This hazardous waste marking must be on both sides of the container body, right and left side of the 4-wheel containers: C770 y C1100L



### C770 / C1100 waste filling

- Containers other than those for which they have been tested and approved may not be used to store and transport ADR waste.

### Locks and drain plug

- The containers are supplied without a drain plug and with a manual lock that can only be used by authorised personnel.



## REAR LOADING CONTAINERS – 4 WHEELS

# Clinical waste containers

## Handles

- The containers have two handles on the sides of the body. It has an easy grip for better handling.



## Wheels

- The wheel steering lock accessory is optional when the container is to be used with a trailer system.
- Grey non-marking wheels are fitted as standard.



## Other accessories

- For special accessories and equipment, please refer to the product information at [www.contenur.com](http://www.contenur.com)