

Definitive reinvention.
A new concept
of recycling.

OVAL



CONTENÜR



CONTENUR UK Ltd
Image Business Park
Acornfield Road
Knowsley Industrial Estate
Knowsley
L33 7UF

www.contenur.co.uk

**Definitive reinvention.
A new concept
of recycling.**

OVAL



CONTENUR

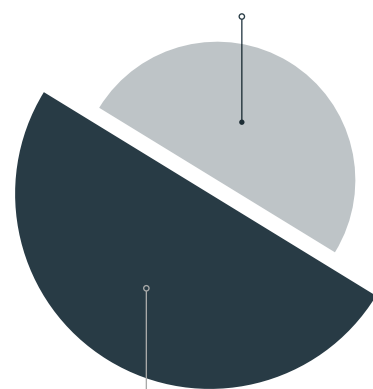
This catalogue is printed on FSC-certified paper.
We hope that this document has exceeded your
expectations. Please consider the environment and
recycle it at the end of your reading.

For additional copies or to consult the interactive
catalogue, please visit www.contenur.com/en.

DEFINITIVE REINVENTION

General Features.

Front opening height 1.190 mm



Height 1.600 mm



OVAL 2000

OVAL 3000

TWO MODELS

THE MOST COMPLETE SOLUTION:

**For the city:**

Total integration into the urban environment, refined aesthetics and ample room for personalisation.

**For the citizen:**

Ease of use, height that does not restrict visibility, elements that facilitate accessibility.

**For the service company:**

Its simplified design reduces maintenance, making it the most efficient solution.

**For the environment:**

Specially designed to house smart elements, sensors and locks.

OVAL

Total integration
into the urban environment.



WASTE FRACTION

OVAL 2000.

OVAL 2000
Organic Waste



OVAL 2000
Glass



OVAL 2000
SUW

WASTE FRACTION

OVAL 3000.

OVAL 3000
Paper



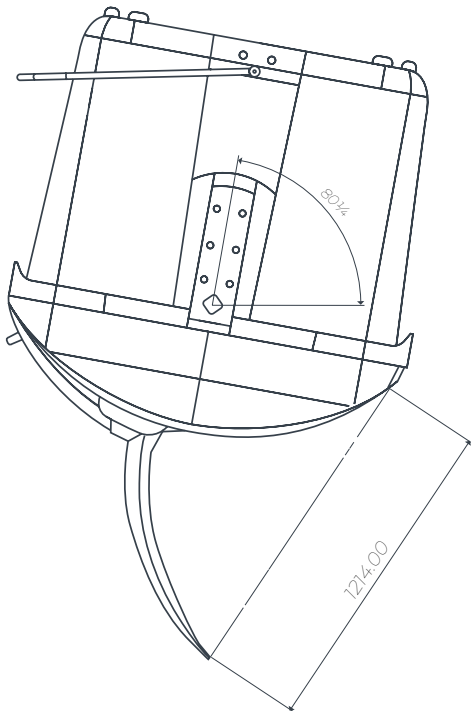
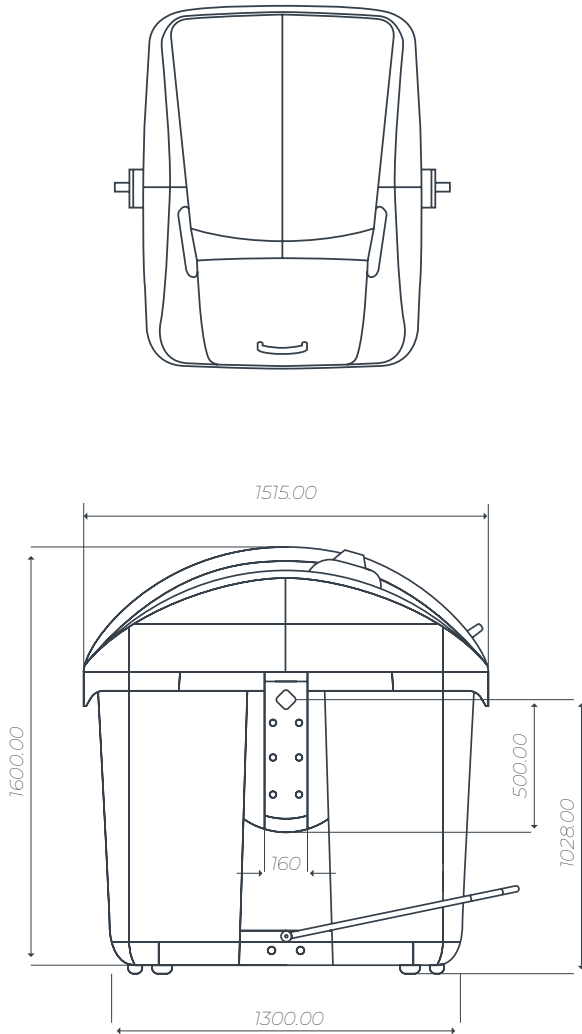
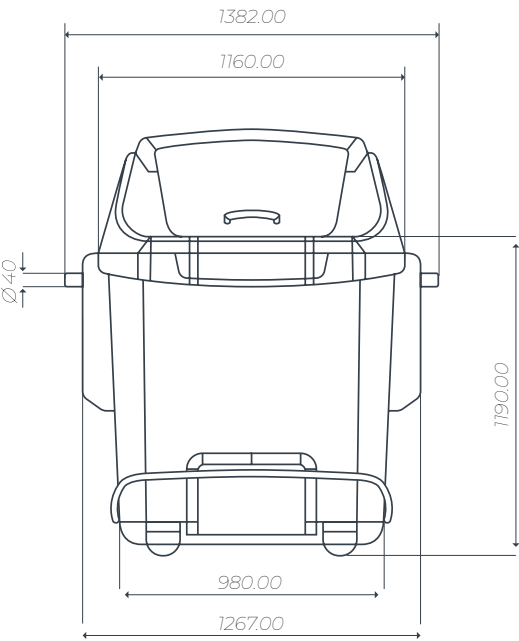
OVAL 3000
Packaging



OVAL 3000
SUW

OVAL 2000

Information.



CHARACTERISTICS

Waste fraction	SUW, glass, organic
Dimensions (mm)	1.267 x 1.515 x 1.600
Weight with pedal (kg)	116
Capacity (L)	2.000
Maximum load (kg)	According to standard
Circular openings (mm)	1x Ø200 / 1x Ø400
Front opening height (mm)	1.250
Lid opening (mm)	550
Edge height (mm)	1.190

CONTAINERS.

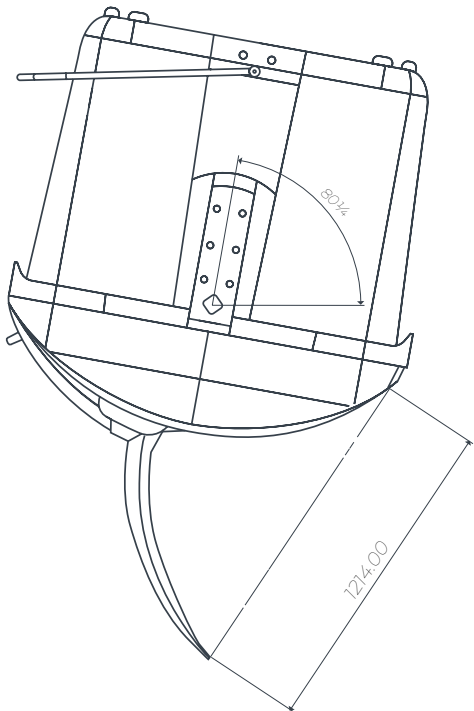
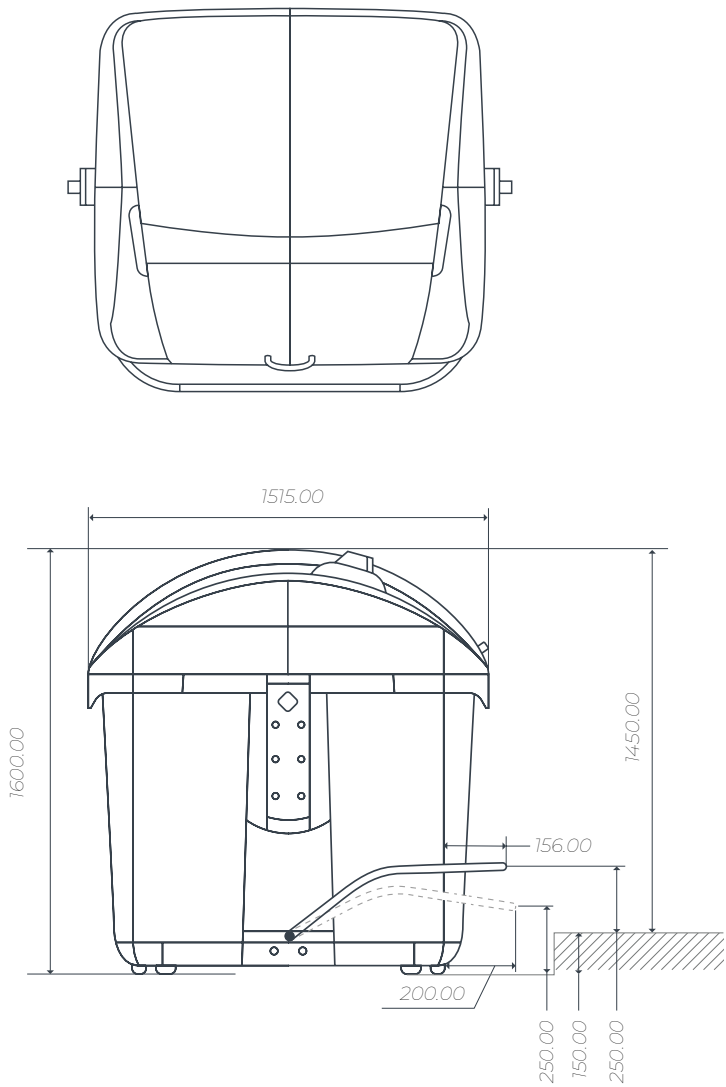
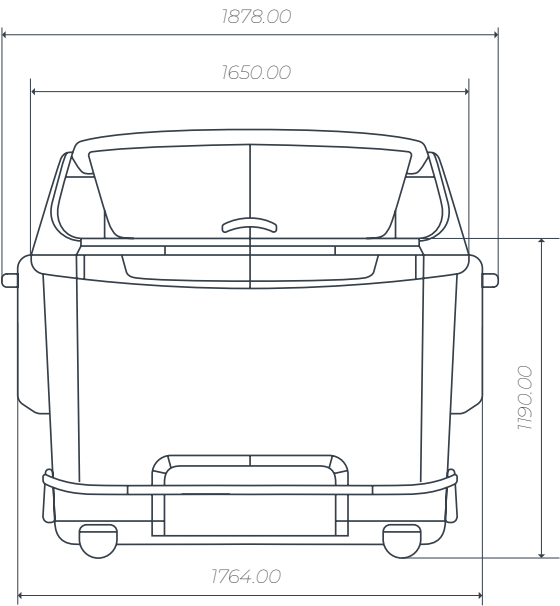
General features.

- Product designed for **complete integration in any environment**, with a total height of 1,600 mm, ensuring it does not represent a visual obstacle and allows perfect visibility of the road and vehicles.
- Total opening of the user lid of **550 mm**.
- The pedal is integrated into the container. Due to its enveloping shape, it does not represent an obstacle and **allows the lids to be opened effortlessly**. The height is adjustable.
- Injection moulded **HDPE** body
- Injection moulded **HDPE** lids.
- **100% recyclable** at end of its useful life and made from up to 77% recycled material.
- Opening heights between **1,190 and 1,250 mm**. If actioned with a pedal, minimal effort is required, making it fully accessible.
- **Personalisation:** large personalisation area on the body, as well as on the front and rear rim.
- Designed to house **smart elements**.
- Standard **UNE EN 170001** (certificate issued by an accredited body).



OVAL 3000

Information.



CHARACTERISTICS

Waste fraction	SUW, packaging, paper
Dimensions (mm)	1.764 x 1.515 x 1.600
Weight with pedal (kg)	138
Capacity (L)	3.000
Maximum load (kg)	According to standard
Circular openings (mm)	2x Ø200 / 2x Ø400
Front opening height (mm)	1.250
Lid opening (mm)	550
Edge height (mm)	1.190

CONTAINERS.

General features.

- Product designed for **complete integration in any environment**, with a total height of 1,600 mm, ensuring it does not represent a visual obstacle and allows perfect visibility of the road and vehicles.
- Total opening of the user lid of **550 mm**.
- The pedal is integrated into the container. Due to its enveloping shape, it does not represent an obstacle and **allows the lids to be opened effortlessly**. The height is adjustable.
- Injection moulded **HDPE** body
- Injection moulded **HDPE** lids.
- **100% recyclable** at end of its useful life and made from up to 77% recycled material.
- Opening heights between **1,190 and 1,250 mm**. If actioned with a pedal, minimal effort is required, making it fully accessible.
- **Personalisation:** large personalisation area on the body, as well as on the front and rear rim.
- Designed to house **smart elements**.
- Standard **UNE EN 170001** (certificate issued by an accredited body).



Main attributes





MAIN ATTRIBUTES

DESIGN

PERSONALISATION

SUSTAINABILITY

ERGONOMICS

PERFORMANCE

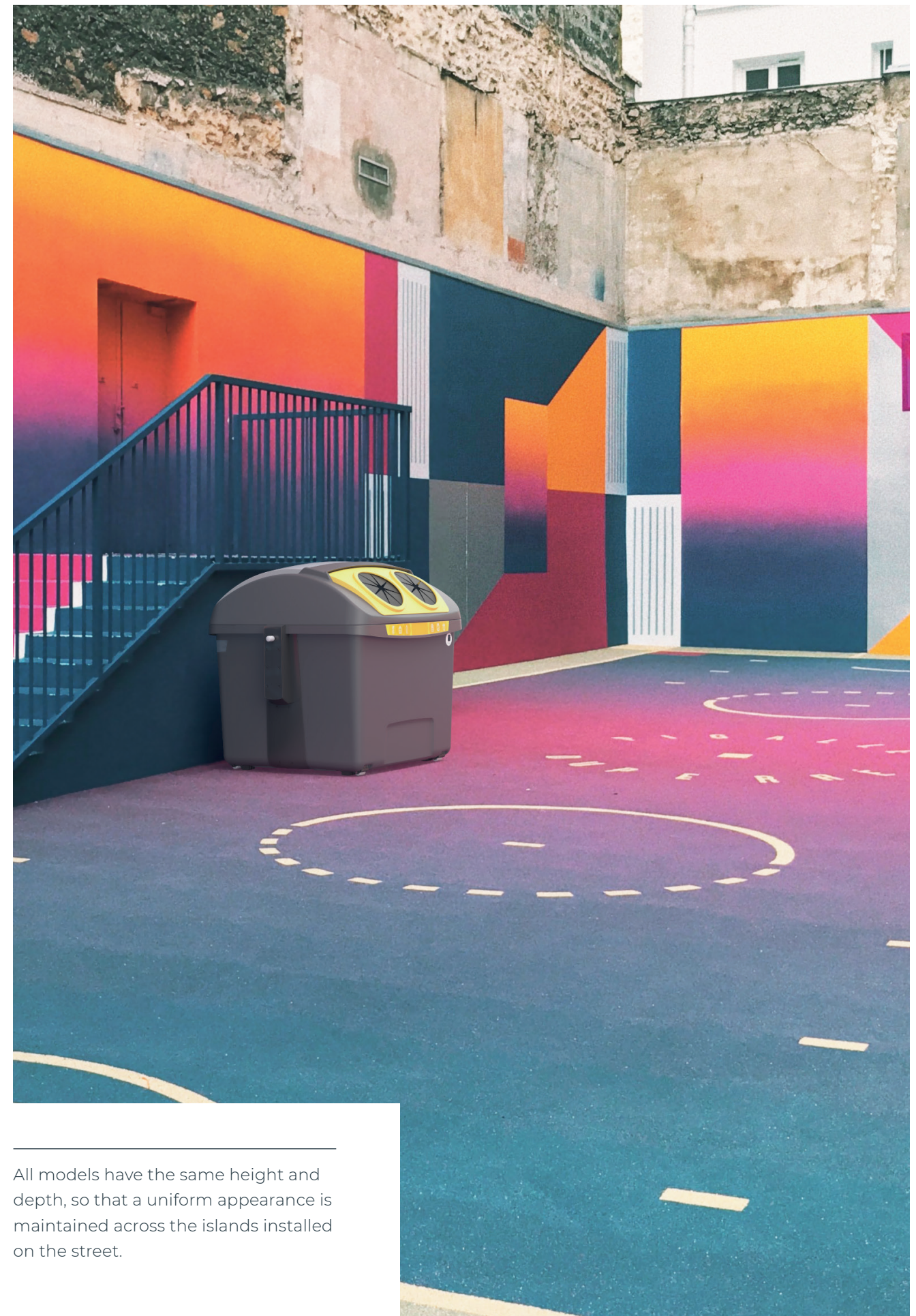
DESIGN

Total integration in the urban environment.

Rounded shapes and simplified lines. Each component is designed to facilitate and maximise its use. Its aesthetic has been refined for total integration into the city. All models have the same height and depth, so that a uniform appearance is maintained across the islands installed on the street.

MAXIMUM HEIGHT 1,600 MM:

It allows pedestrians to have full visibility of the road without the container becoming a visual obstacle.

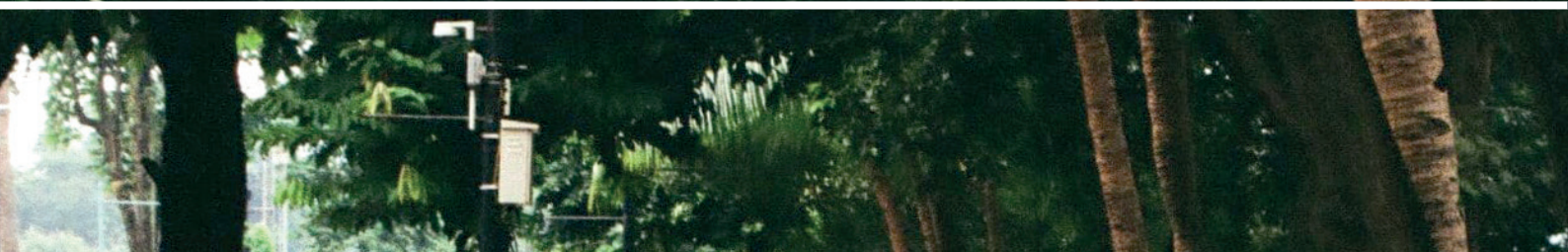


All models have the same height and depth, so that a uniform appearance is maintained across the islands installed on the street.



MAIN ATTRIBUTES

DESIGN



PERSONALISATION



SUSTAINABILITY

ERGONOMICS

PERFORMANCE

PERSONALISATION

A range of possibilities.

Large space for personalisation on the body (hot-stamping or vinyl). Possibility of including a waste identification sticker, which facilitates recycling tasks for citizens, as it includes graphics and icons that allow the quick identification of the type of waste to be deposited in the container.

Accessible containers:

The OVAL model can include a plate with Braille marking and an embossed icon to facilitate its use for visually impaired citizens.

Waste identification sticker

Hot-stamping or vinyl



A resistant container manufactured using high-density polyethylene injection moulding on body and lids.

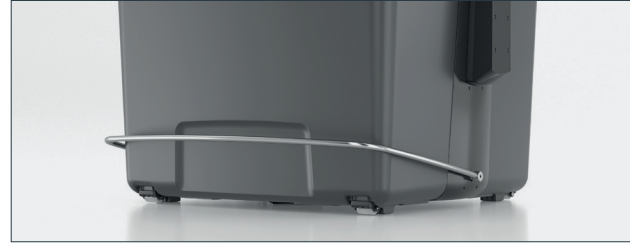
ACCESSORIES



SELECTIVE OPENINGS –

**Check each Model's availability*

Circular openings, Ø200 and Ø400, and paper opening 890 x 200 mm



PEDAL –

Built-in pedal designed for accessibility and ergonomics. Maximum height of the pedal in its minimum position is 250 mm above the ground.



USER LID –

Lightweight and cushioned to slow down the lowering of the lid preventing abrupt closures.



PEDAL FLEX® –

The only pedal on the market compatible with a lock on the lid. Accessory compatible with the lever option on the body.



LARGE LID IN LID –

Accessory used to prevent atmospheric agents and odours from spreading. Useful dimension: 400 x 400 mm.

Lid options:

- ▶ Without a lock
- ▶ With a manual lock
- ▶ With an electronic lock



LEVER –

Manual opening mechanism located on the body for better accessibility.



LARGE SIZE OPENING –

Simplifies the container as it does not require a foot pedal and maximises the area available to introduce waste. It allows the waste to be introduced without contact with the container.

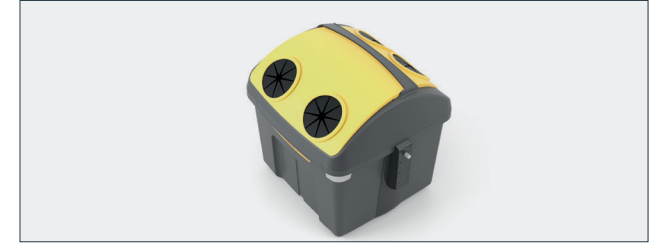
Dimensions:

- ▶ OVAL 2000: 370 x 410 mm
- ▶ OVAL 3000: 370 x 750 mm



MANUAL LOCK –

Manual lock to control user access to the container.



AGAINST THE WALL OPTION –

It makes it easier for the user to deposit waste when the container is located in areas that are difficult to access and cannot be reached from the kerbside. Loading and unloading is carried out from the same side.



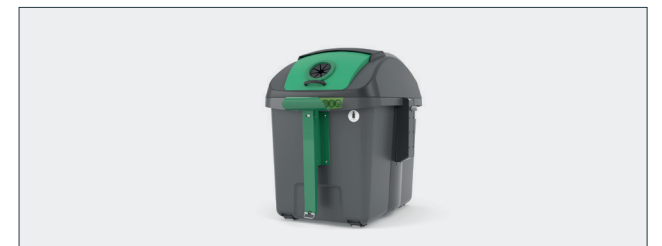
ELECTRONIC LOCK –

Reliable, tight integration that reduces incidents.



ALIGNMENT SYSTEM –

Makes it easier to keep the container in the same position at all times.



LARGE PRODUCER SYSTEM –

Lifting system that allows waste to be emptied from wheeled bins into large containers.



MAIN ATTRIBUTES

DESIGN

PERSONALISATION

SUSTAINABILITY

ERGONOMICS

PERFORMANCE



SUSTAINABILITY

Product 100% recyclable at the end of its useful life.

CONTENUR is committed to giving containers a second life by including them again in the manufacturing process. To this end, once they have been removed, they will be treated for reuse.



RECYCLABILITY

As part of its CIRCLE® project, **CONTENUR** has established priorities in resource management to integrate OVAL into the precepts of the circular economy. OVAL is a model that is 100% recyclable at the end of its useful life.

COMMITMENT

CONTENUR undertakes to give the containers a second life by including them again in the manufacturing process. To this end, once they have been removed, they will be treated by separating each of their materials and converting the plastic parts into material for the production of new containers and reusing the metal parts for other uses.



The **CIRCLE®** project establishes priorities in the management of resources to integrate OVAL into the precepts of the circular economy.

WHAT IS CIRCLE®?

General characteristics.

CIRCLE® is the concept that brings together and defines **CONTENUR's** strategy, positioning, way of acting, obligations and developments in the field of environmental sustainability.

OVAL is a 100% CIRCLE® container.

As part of its **CIRCLE®** project, **CONTENUR** sets priorities in resource management to integrate OVAL in accordance with the precepts of the circular economy. OVAL is a 100% recyclable container model at the end of its useful life.

This is **CONTENUR's** way of positioning itself to meet current demands in terms of the Circular Economy, Recycling, Development and all those elements that refer to the recommendations of the European Commission on specific issues and actions in terms of environmental sustainability and the recycling of plastics.

CIRCLE® PROPOSAL.

CIRCLE® commitments in the short and medium term:



• Product

By 2025, 60% of the material used in the manufacture of containers will derive from recycled materials.

• Design

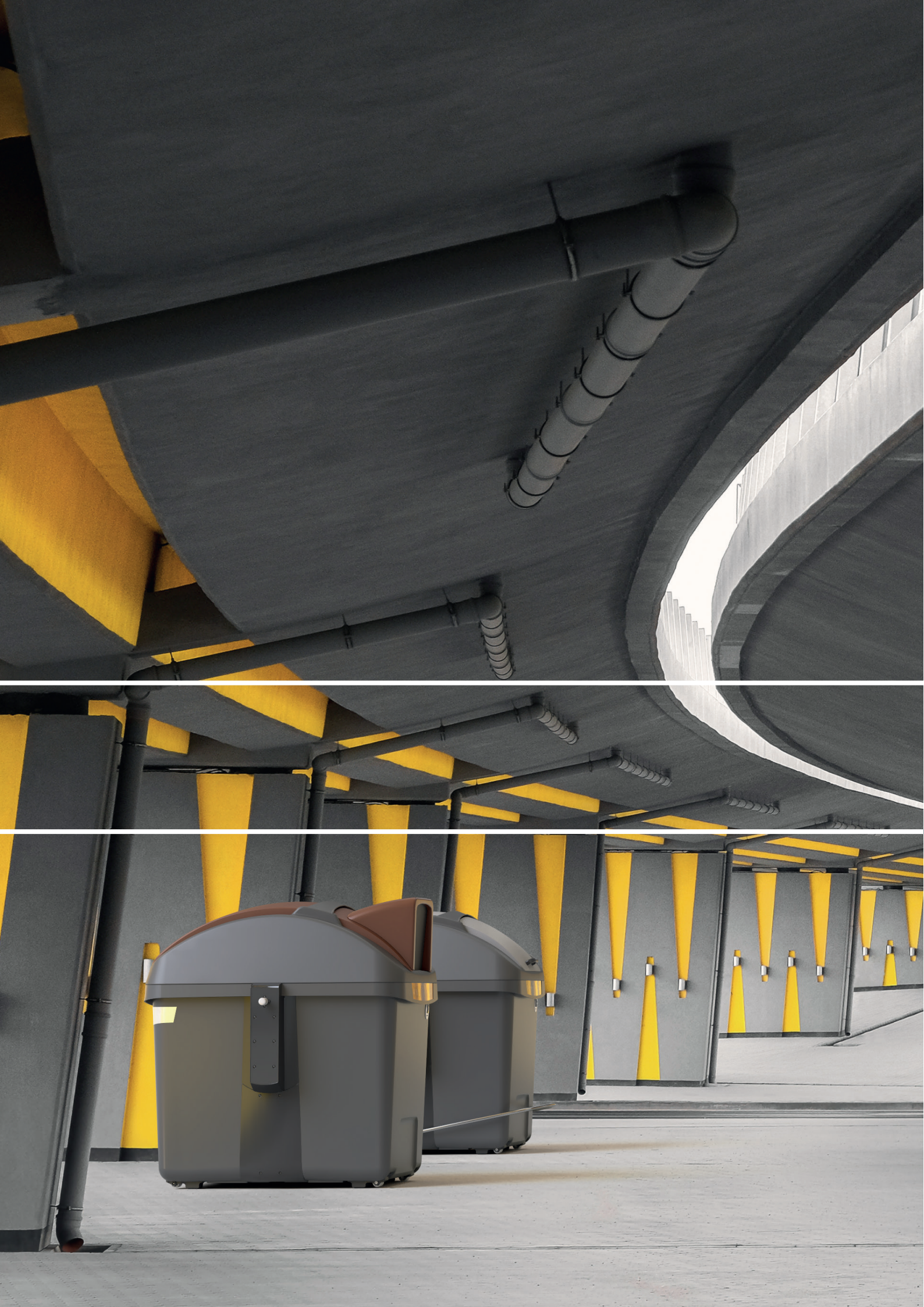
Certificación de los estándares de Eco-diseño de productos, de acuerdo con UNE-EN ISO 14006 en 2019.

• Environment

Implement the recommendations of the **Operation Clean Sweep (OCS)** programme to reduce the discharge of pellets into the environment. Compliance with this programme will be certified in 2019.

Increase in resource efficiency. **Certification of energy management standards** in accordance with UNE-EN ISO 50001 in 2019.





MAIN ATTRIBUTES

DESIGN

PERSONALISATION

SUSTAINABILITY

ERGONOMICS

PERFORMANCE

ERGONOMICS

Designed for ease of use.

The maximum height of the pedal in its lowest position is 250 mm above the ground, and its travel for maximum lid opening allows the pedal to be brought to the point of contact with the ground without overstressing the lid.

External pedal:

OVAL integrates a pedal designed with accessibility and ergonomics in mind.

Accessibility:

Accessible at 1,190 mm.

User lid:

Light and cushioned which slows down the lowering of the lid avoiding abrupt closures.

Openings:

Ø400 and Ø200 openings and 890 x 200 mm paper opening.

Electronic locks:

Reliable and tight integration that reduces incidents.



Lightweight, cushioned user lid that slows down the lowering of the lid to avoid abrupt closures.



MAIN ATTRIBUTES

DESIGN

PERSONALISATION

SUSTAINABILITY

ERGONOMICS

PERFORMANCE

PERFORMANCE

Efficient maintenance..

OVAL is a resistant container, manufactured using high density polyethylene injection moulding for the body and lids, and with protection against UV rays, which prolongs its initial appearance over time.

EASY TO CLEAN:

- Rib and ripple free body.
- Smooth, non-ribbed spokes to prevent debris build-up.
- Reduced number of parts and components for efficient maintenance.



A durable container manufactured using high-density polyethylene injection moulding for the body and lids.



CONTENTUR UK Ltd

Image Business Park
Acornfield Road
Knowsley Industrial Estate
Knowsley
L33 7UF

www.contentur.co.uk

This catalogue is printed on FSC-certified Olin Regular AW paper. We hope that this catalogue has exceeded your expectations. Please consider the environment and recycle it at the end of your reading.

For additional copies or to consult the interactive catalogue, please visit www.contentur.com/en.

