

2-3-4

Containers up to
1300 l.

3.900 kg

Nominal max.
weight

PnP

Equipment
without installation

10%

Maximun gradiert



COLUMNS



Milenium



Europa



EVO



Austral



Cité

FEATURES



Column

Millenium, Europa and Cité models manufactured from high-density polyethylene.

EVO and Austral models manufactured from galvanised or stainless steel.

Available with apertures for glass, paper and plastics, or pedal-operated single/dual drum with capacities ranging from 30 to 120 litres.

Meets the most stringent accessibility standards.

Platform

Manufactured from an S275-JR tubular steel structure and 3 mm sheet steel.

Fully hot-dip galvanised to meet the ISO 1461 standard.

Platform finished with a 3/5 mm hot-dip galvanised anti-slip checker plate or tray for paving (45 mm) .

Adjustable for gradients of up to 10%.

lifting structure

Manufactured from an S275-JR tubular steel structure and 3 mm sheet steel.

Lifting mechanism based on two hydraulic cylinders manufactured with an ST-52 sleeve and F-114 Ø 40 mm chrome valve rod, with a total lifting capacity of 3,900 kg.

Fitted with parachute safety valves and lock bolts for maintenance work.

Prefabricated concrete

Monoblock enclosure manufactured using a self-compacting mould and HA-35 (C40/50) concrete.

Classified as XS3 under the EN 206 standard.

OPERATING THE EQUIPMENT



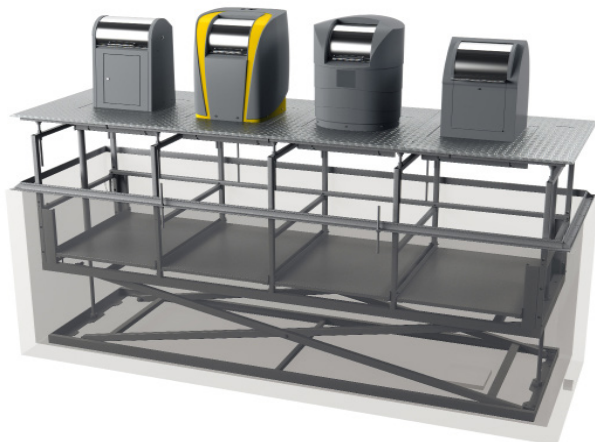
Truck quick coupling mechanism

The equipment is operated via a quick coupling (3/8") male connection on the walk-on platform.

The lorry must have a female connection connected to the hydraulic circuit of the compactor, which must be able to provide 155 bar and 16l min.

Times

15 seconds up.
15 seconds down.



Hydraulic lifting system

The equipment can be operated using an autonomous 4 kW hydraulic lifting system located in a separate chamber with a programmable remote control mechanism.

This system can operate up to 5 units (not simultaneously).

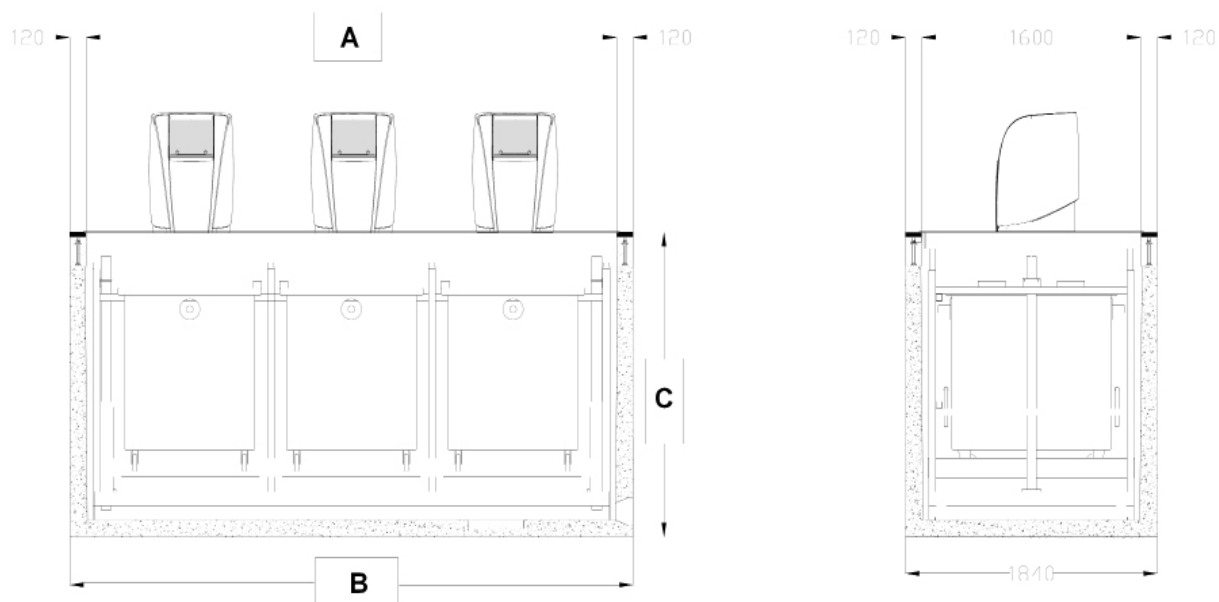
Times

Programmable to meet customer requirements.

15 seconds up (standar).
15 seconds down (standar).



DIMENSIONS



GENERALE DIMENSIONS

	SCT 2	SCT 3	SCT 4
Number of containers	2	3	4
Length (A) / Width / Height (mm) (Inner)	2860 x 1600 x 1800	4010 x 1600 x 1800	5200 x 1600 x 1800
Length (B) / Width / Height (C) (mm) (Outer)	3100 x 1840 x 1920	4250 x 1840 x 1920	5440 x 1840 x 1920
Surface height	951 mm	951 mm	951 mm

CUSTOMISATION AND ACCESSORIES



COLOURS

Columns can be painted in any colour from the RAL standard.



CRESTS AND LOGOS

Customisation with the client's crest/logo and recycling symbols.



ACCESS CONTROL

Adapted to ensure compatibility with the most common systems.



FILL CONTROL SYSTEM

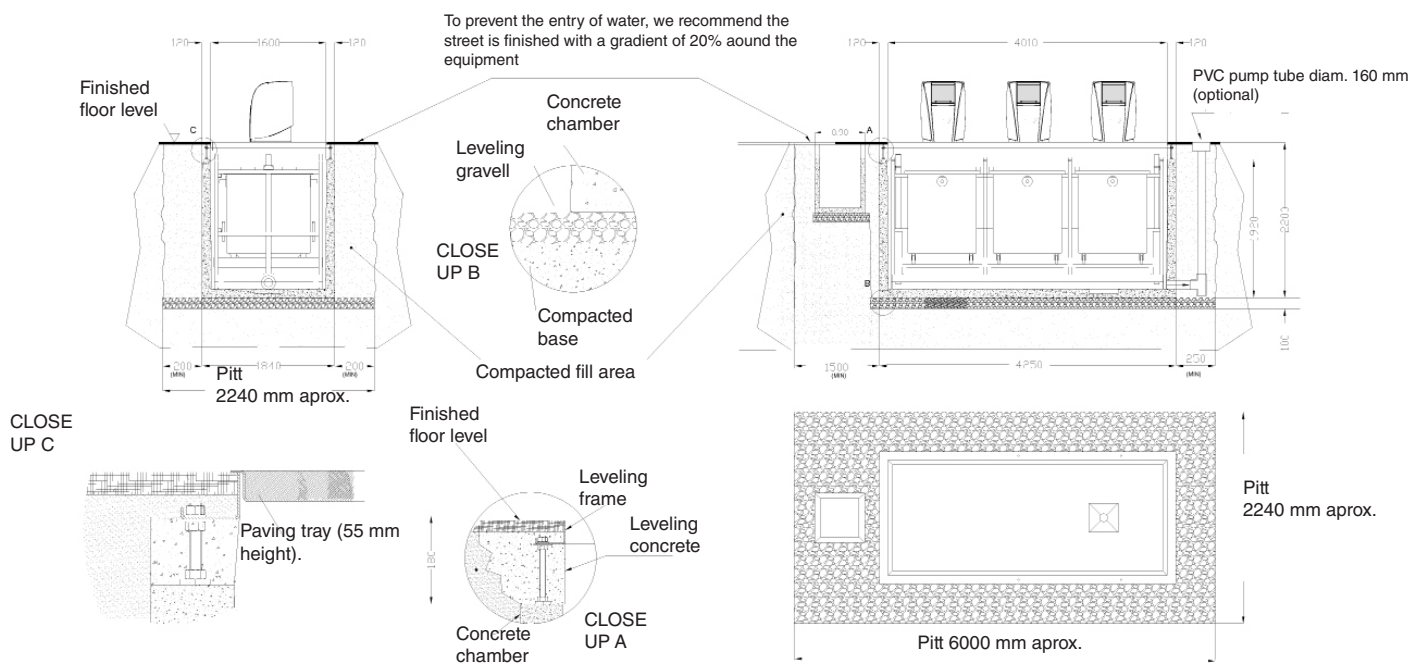
Adapted to ensure compatibility with the most common systems.

CIVIL WORKS

Contenur SCT underground containers have been produced to minimise the cost and time required for civil works. All equipment is supplied ready for use. All that is needed is to fit the waste deposit column (for installations in streets without a gradient). The dimensions of the system are designed to optimise excavation and the fill ratios of the container.

During the installation process, the Contenur Technical Department will provide customer support to ensure the correct execution of civil works. It is vital that all parties involved work together closely. We provide solutions, not just high-quality, durable equipment.

DIMENSIONS IN mm.



Important: Before installing the equipment, ensure the base of the pit is level and the soil has sufficient bearing capacity (minimum of 3 kg/cm²).

Soils with a lower capacity should be strengthened with a 10 cm single reinforced concrete floor.

Note 2: For installation in areas with a gradient, the level of the pit referred to in the drawings is the level of the lowest point (downstream).

The equipment can be adapted to a maximum gradient of 6%. For steeper gradients, contact the Research Department.

MAINTENANCE

Contenur SCT systems are characterised by their durability and low maintenance costs, and have been designed for use in harsh environments with an average lifespan of over 15 years.

As with any piece of machinery, we recommend periodic maintenance and cleaning to ensure the durability, hygiene and safety of the equipment. The equipment comes with a detailed manual with information on recommended maintenance tasks and frequencies.