

QUICK START GUIDE

Aquilon C - Ref. AQL-C



ANALOG WAY[®]
Pioneer in Analog, Leader in Digital

Thank you for choosing **Analog Way** and the **Aquilon C**. By following these simple steps, you will be able to set up and use your 4K/8K multi-screen presentation system and videowall processor within minutes. Discover the **Aquilon C** capabilities and intuitive interface while commanding top-notch presentations and unleash your creativity for a new experience in show and event management.

WHAT'S IN THE BOX

- 1 x **Aquilon C (AQL-C)**
- 2 x Power supply cords
- 1 x Ethernet cable (for device control)
- 3 x MCO 5-pin connectors
- 1 x Web-based Remote Control Software included and hosted on the device
- 1 x Rack mount kit (the parts are stowed in the packaging foam)
- 1 x User Manual (PDF version)*
- 1 x Quick start guide*

* User Manual and quick start guide are also available on www.analogway.com

Register
your product

Go on our website to register your product(s)
and be notified about new firmware versions:
<http://bit.ly/AW-Register>

CAUTION!

The use of rear rack support slide rails for all rack mounted applications is highly recommended. Damage caused by improper rack mounting will not be covered under warranty.

QUICK SETUP & OPERATION

The **Aquilon C** uses standard ethernet LAN networking. To access the Web RCS, connect a computer to the **Aquilon C** using the Ethernet cable. Then on the computer, open an internet browser (Google Chrome is recommended). Into this internet browser, enter the IP address of the **Aquilon C** displayed on the front panel screen (**192.168.2.140** by default).

The connection starts.

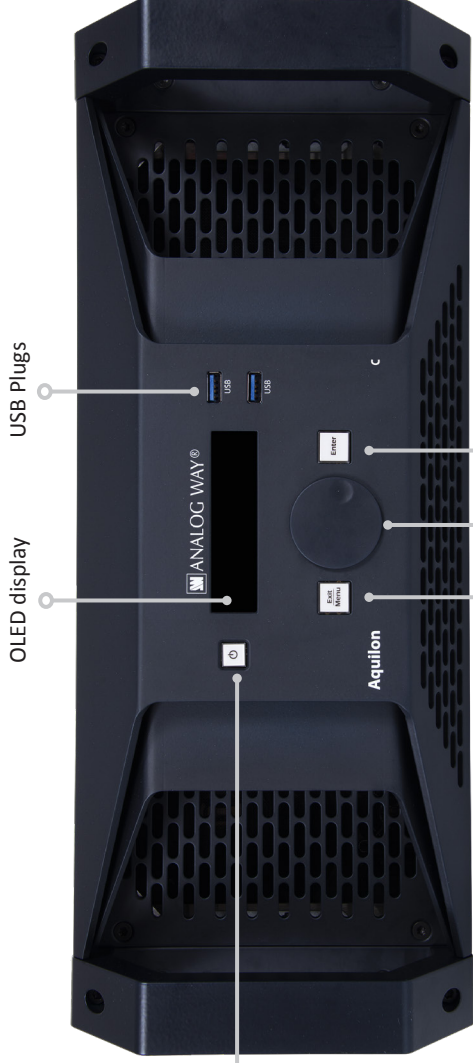
Often, computers are set to DHCP client (automatic IP detection) mode. You may need to change the IP address configuration on your computer before you can connect. These settings are found in the properties for your LAN network adaptor, and vary by operating system.

The default IP address on the **Aquilon C** is **192.168.2.140** with a netmask of **255.255.255.0**. Therefore, you can assign your computer a static IP address of **192.168.2.100** and a netmask of **255.255.255.0** and should be able to connect.

If the connection is not starting:

- Be sure the computer IP address is on the same network and subnet as the **Aquilon C**.
- Be sure that two devices do not have the same IP address (prevent IP conflicts)
- Check the network cable connecting the **Aquilon C** to the computer and, if involved, a hub or switch.
- For more information, please refer to the User Manual or contact Analog Way Technical Support.

AQUILON C - REF. AQL-C / FRONT & REAR PANELS DESCRIPTION



On/Off - Stand-by:

Press once and confirm with Enter button for stand-by mode.

OLED display

USB Plugs

ANALOG WAY®

EXIT MENU

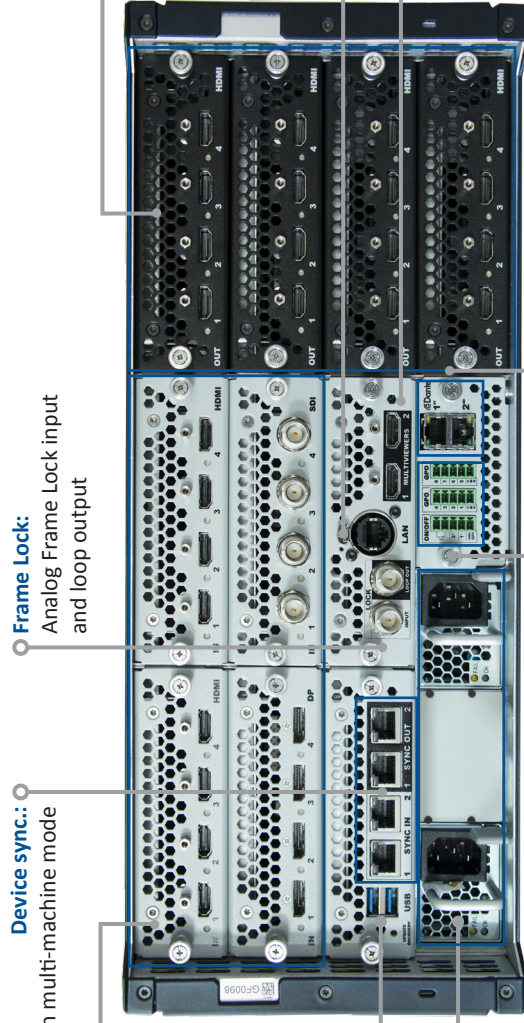
Aquilon

ENTER

Exit/Menu button:
Home menu or back one level

Enter button: Confirm the menu or command
Menu scroll knob

The IP address can be changed from the front panel in the Control menu.



Device sync:
Used for effect sync in multi-machine mode

Frame Lock:
Analog Frame Lock input and loop output

Up to 16 inputs - 6 models available:
- 4 x DisplayPort 1.2
- 4 x HDMI 2.0
- 4 x HDMI 2.0 over optical fiber
- 4 x 12G-SDI (also compatible 3G-SDI and 6G-SDI)
- 4 x 12G-SFP non MSA
- 4 x SDVoE

Up to 16 outputs - 6 models available:
- 4 x DisplayPort 1.2
- 4 x HDMI 2.0
- 4 x HDMI 2.0 over optical fiber
- 4 x 12G-SDI (also compatible 3G-SDI and 6G-SDI)
- 4 x 12G-SFP non MSA
- 4 x SDVoE

Removable Power supplies:
2 x USB Plugs
100-240 VAC; 12-7A; 50/60Hz;
redundant power supplies (1+1), hot swappable, max consumption: 740W

Ethernet Plug for unit control (Web RCS or API)
Multiviewers outputs:
- 2 x HDMI 2.0
- or 2 x DisplayPort 1.2 (option)

Tally / GPI-O

Dante™ audio plugs:

- Dante audio primary and secondary RJ45 Gigabit Ethernet connectors

CAUTION:

The user should avoid disconnecting the power source (AC input) until the unit is in stand-by mode. Failure to do this could result in hard drive data corruption.



OPERATION OVERVIEW

WEB RCS MENUS

LIVE

Screens: Set Screens and Aux Screens layer settings (content, size, position, borders, transitions, etc.).
Multiviewers: Set Multiviewers widgets settings (content, size, and position).

SETUP

Preconfig.: Setup assistant for adjusting all basic setups.
Multiviewers: Set Multiviewers signal settings (Custom resolution and rate), patterns or image adjustment.
Outputs: Set Outputs signal settings (HDCP, custom resolution and rate), patterns or image adjustment.
Inputs: Set Inputs signal settings (resolution and rate), patterns, image adjustment, cropping and keying. It is also possible to Freeze or Black an input.
Image: Import images in the unit. Then load them as image presets to be used in layers.
Formats: Create and manage up to 16 custom formats.
EDID: Create and manage EDIDs.
Audio: Manage Dante Audio and audio routing.
Extras: Timers and GPIO.

PRECONFIG

System

Set the Internal rate, Framelock, Audio rate, etc.

Multiviewers

Enable one or two Multiviewers or set a Global Multiviewer in Link mode.

Screens / Aux Screens

Enable Screens and Aux Screens.
Select the layer mode per screen (see below).
Set outputs capacity.

Assign outputs to Screens using drag and drop.
Add layers to Screens and set their capacity.

Mixer Seamless and Split layers mode

In Split layers mode, double the number of layers displayed on Program. (Transitions are limited to Fade or Cut. Multiviewers widgets display Preview in wireframe only).

Canvas

Position the outputs in a virtual screen to create the Canvas.
- Set Auto or custom Canvas size.
- Set Outputs resolution and position.
- Set Area of Interest (AOI).
- Set Blending or Gap

Inputs

Set capacity and define Global inputs in Link mode.

Images

Set capacity and define Global images in Link mode.

Backgrounds

Select Inputs and Images to create up to 8 Background sets per Screen to be used in Live.

LIVE

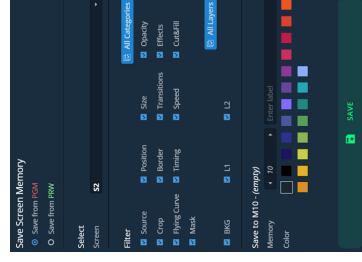
Create presets in **LIVE > Screens** and **LIVE > Multiviewers**.

- Set layer size and position in Preview or Program by clicking and dragging the layer.
 - Drag sources into layers from the left panel or select them in layer properties.
 - Set transitions and use the Take button to send the Preview configuration to Program
- For more layers settings, please refer to the LivePremier User Manual.
- A Multiviewer can display up to 64 Widgets that act like Screen layers. A Widget content can be a program, preview, input, image or timer.

MEMORIES

Once a preset is built, save it as one of the 1000 Screen memory slots the **Aquilon C** offers.

- Click **Save**, filter what to save and select a Memory.



- Load a preset at any time on Program or Preview by clicking on the preset number or using drag and drop the preset into the Program or Preview windows.

MORE FEATURES

Save / Load

Export and Import configurations from the Web RCS or Front panel.
Save configurations directly in the unit.

Firmware Update

Update the unit firmware easily from the Web RCS or from the Front panel.

Mask (Cut & Fill)

Use a source as a mask for a Cut & Fill effect.

Keying

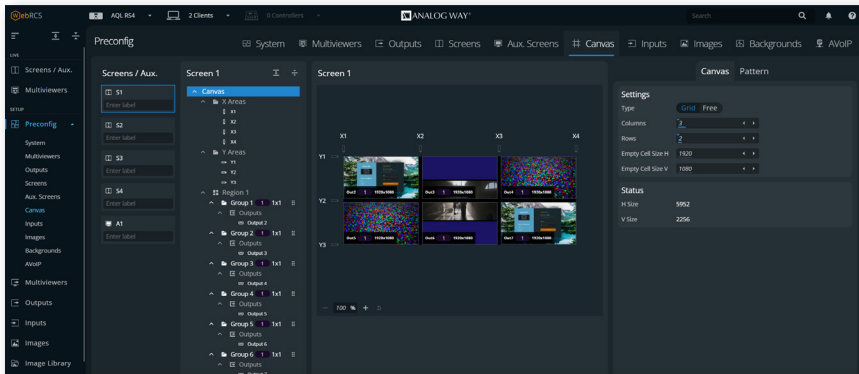
Apply Chroma/Luma/CremaTTe 3D LUT or Cut & Fill Keying on an Input.

Master Memories

Use Master Memory to load multiple Screen presets.

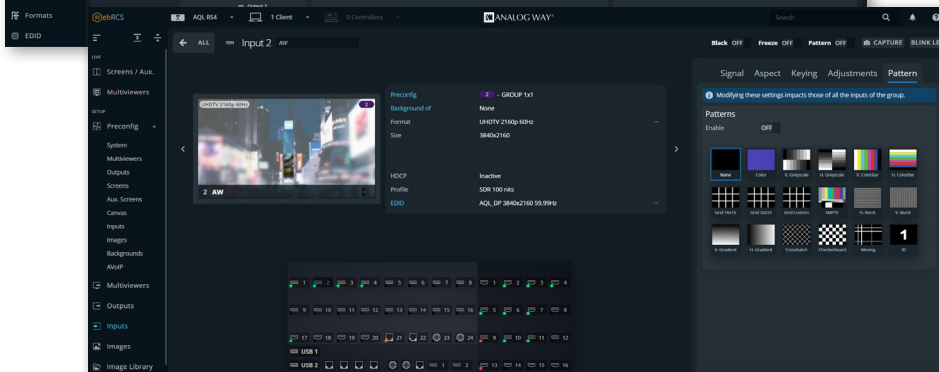
For complete details and operations procedures, please refer to the LivePremier User Manual and our website:

WEB RCS STRUCTURE



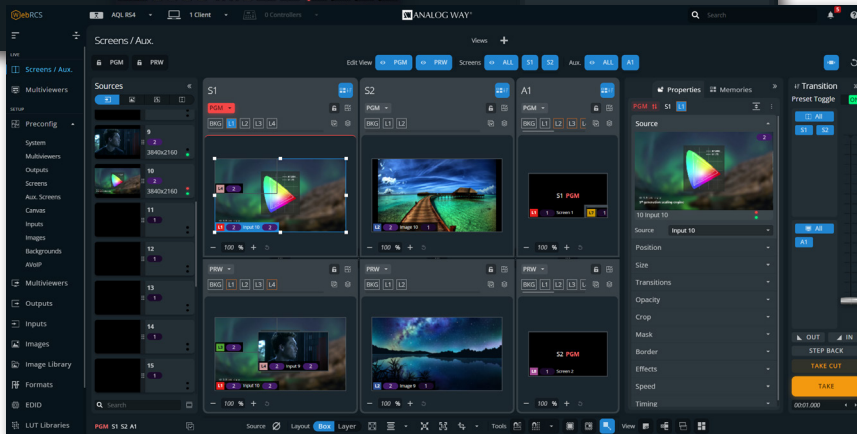
PRECONFIG

The **PRECONFIG** menus are the essential steps to setup the show. Add Screens and Layers while assigning desired capacities. The assistant is here to help setting the unit step by step.



SETUP

In the other **SETUP** menus, manage Signal and Image settings for Multiviewers, Outputs and Inputs. Add images, create custom formats, set Dante Audio routing.



LIVE

In the **LIVE** menus, set content for Screens, Aux Screens and Multiviewers. Set Layer settings (size, position, transitions, etc.), manage screen memories and trigger transitions between Preview and Program Screens.

WARRANTY AND SERVICE

This **Analog Way** product has a 3 year warranty on parts and labor (back to factory). Broken connectors are not covered by warranty. This warranty does not include faults resulting from user negligence, special modifications, electrical surges, abuse (drop/crush), and/or other unusual damage. In the unlikely event of a malfunction, please contact your local **Analog Way** office for service.

GOING FURTHER WITH THE AQUILON C

For complete details and operations procedures, please refer to the **LivePremier** unit User Manual and our website for further information: www.analogway.com