

Products	Aquilon RS alpha, Aquilon RS1, Aquilon RS2, Aquilon RS3, Aquilon RS4, Aquilon RS5, Aquilon RS6, Aquilon C, Aquilon C+, Aquilon Cmax
Date	July 31 st , 2025
Version	5.0.128

The version (s) indicated here above has (have) been tested and validated by the QA Department.

Technical Notes:

Warnings:

DRIVERS:

- Updating to version 4.0.254 and above from 3.1.XX or lower requires to update:
 - Third party drivers and plugins such as Crestron, Companion, AMX or Q-SYS. New specific drivers are available on Analog Way's website.
 - AWJ commands: please refer to LivePremier_awj_programmers_guide_v4.0.pdf document available on Analog Way's website

Please do not use former drivers and former AWJ commands with version 4.0.254 or higher.

DANTE FEATURE:

- When using the Dante Domain Manager (DDM), please disconnect the device from the Dante network and reboot it before updating the firmware. After the update, reconnect it to the Dante network.
- To take advantages of functionalities provided by LivePremier:
 - Dante firmware update during LivePremier updater (version 2.2.79 and above)
 - Address MAC reading

A pre-requisite is to install AW Dante Firmware v3.7.0.16 (embedding Dante Firmware 4.2.3.13, available on Analog Way's website) using the Dante Firmware Update Manager tool before updating the LivePremier firmware.

DRAWBACKS:

- When updating to version 2.2.79 and above from a 1.x version, the following drawbacks may be encountered:
 - Any output configured with a capacity 2 but delivering a dual-resolution format (up to 2560x1600 @ 60hz) will have its capacity automatically changed to 1.
 - Due to the new implementation of Aux. Screens with several layers, the Screens Memories for these Auxiliary Screens must be checked after the update as the size of the previously existing layer is automatically forced to default 1920x1080.

New features and Improvements:

o Preliminary support of ST 2110 input and output cards

- This firmware release contains a preliminary management of the ST 2110 input and the ST 2110 output cards.



- **A firmware update will be necessary to use the hardware cards**
- These cards are equipped with 2x 25GbE SFP28 cages for primary streams and 2x 25GbE SFP28 cages for secondary streams (redundancy).
- They easily integrate ST 2110-20 uncompressed workflows.
- They support all broadcast formats up to UHD 60Hz 10-bit 4:2:2 (based on HD/3G/6G/12G-SDI, no SD-SDI).
- The ST 2110 input card (ref. ACC-AQL-IN-2110) can receive up to 8x FHD 60Hz 10-bit 4:2:2 ST 2110 streams or up to 4x 4K 60Hz 10-bit 4:2:2 streams with ST2022-7 redundancy.
- The ST 2110 output card (ref. ACC-AQL-OUT-2110) can deliver up to 4x 4K 60Hz 10-bit 4:2:2 streams with ST2022-7 redundancy.
- These cards support N-MOS IS-04 (discovery and registration) and IS-05 (device connection management). An external NMOS registry and controller is required for routing streams.
- These cards require an external PTP clock for synchronization.
- **The routing of ST2110 outputs streams is only possible using an external NMOS controller. Support of SDP files and advanced settings will be available in the next release**
- **This preliminary release does not include audio management, available in the next release.**

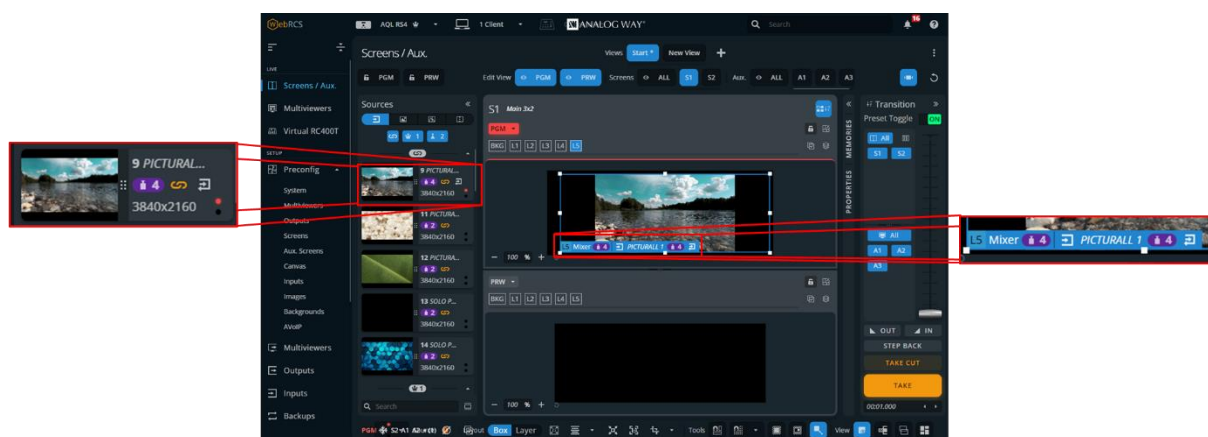
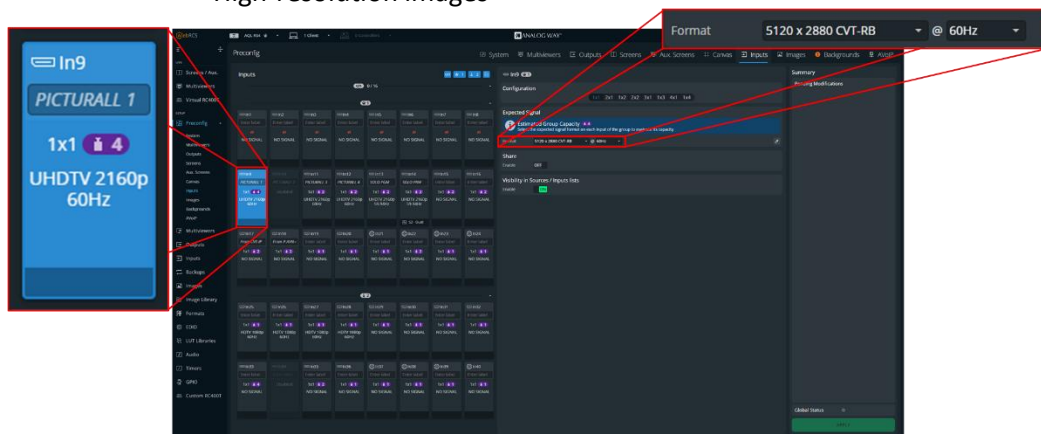
o Support of DP 1.4 on DP input and output cards

- The DP input and output cards now implements DP 1.4 without DSC compression on ports 1 and 3.
- These ports can now support a bandwidth of 32.4 Gbps by preempting the adjacent plugs (2 & 4).
- When configured as DP 1.4 (capacity 4), these plugs can manage formats:
 - 3840x2160 120Hz 8-bit 4:4:4
 - 5K (5120x2880) 60Hz 10-bit 4:4:4
 - Custom formats with a width up to 16384 pixels or a height up to 8192 lines.



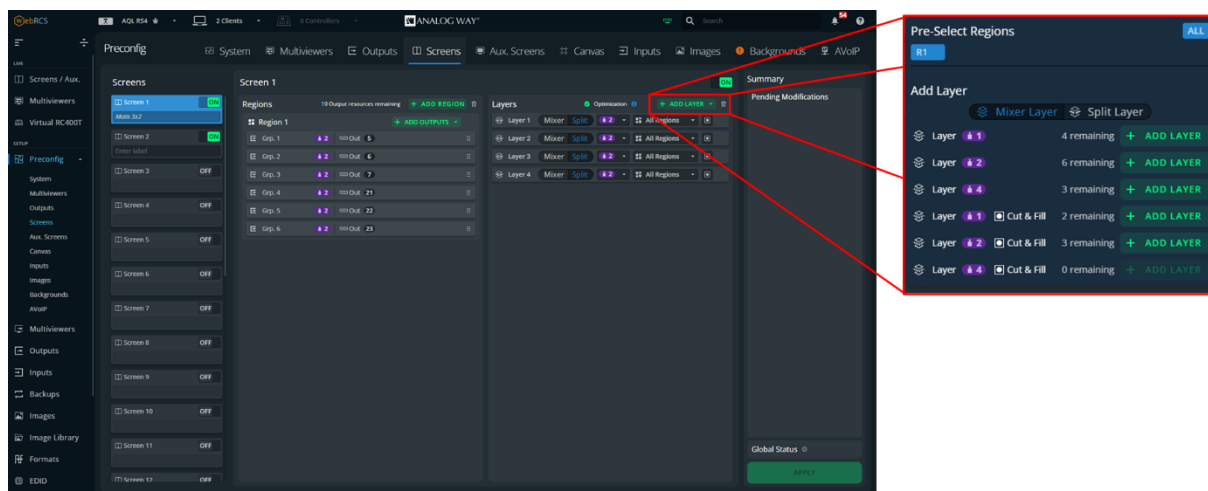
o Support of capacity 4 processing

- The internal processing of the system now manages capacity 4 layers.
- These layers accept sources coming from:
 - DP 1.4 input cards
 - Grouped inputs (2x capacity 2 inputs or 4x capacity 1 inputs)
 - High-resolution images

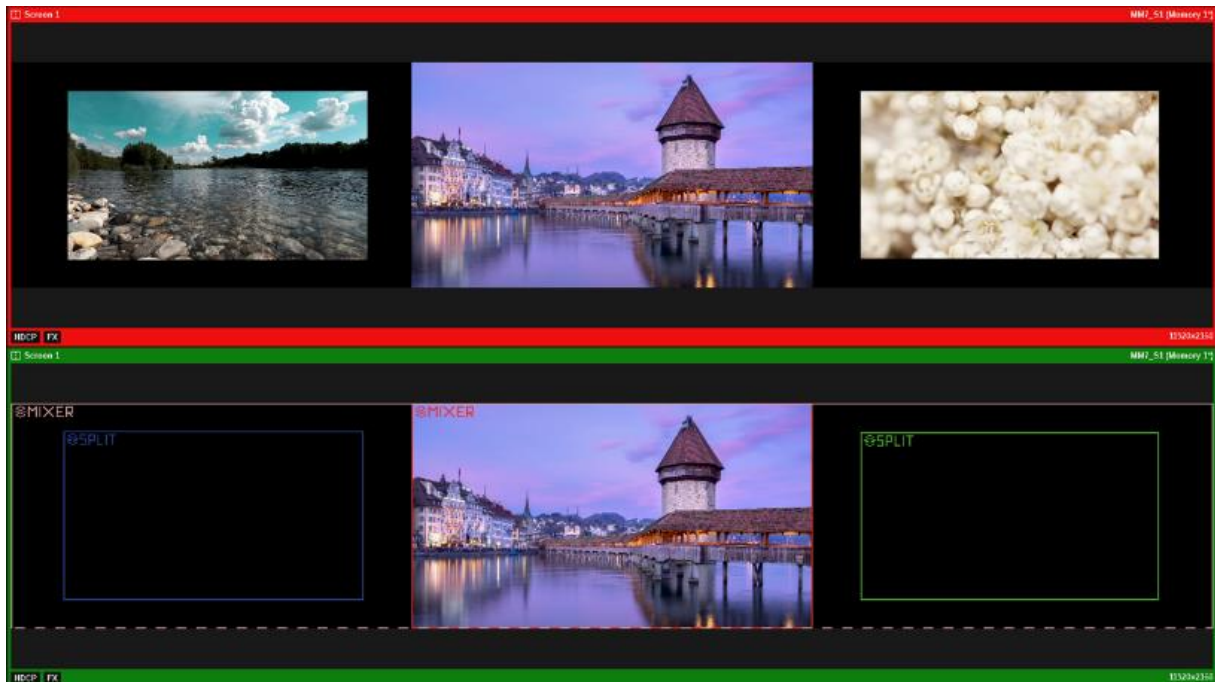


o Mixing and split layers in the same screen

- It is now possible to assign mixing and split layers inside the same screen.

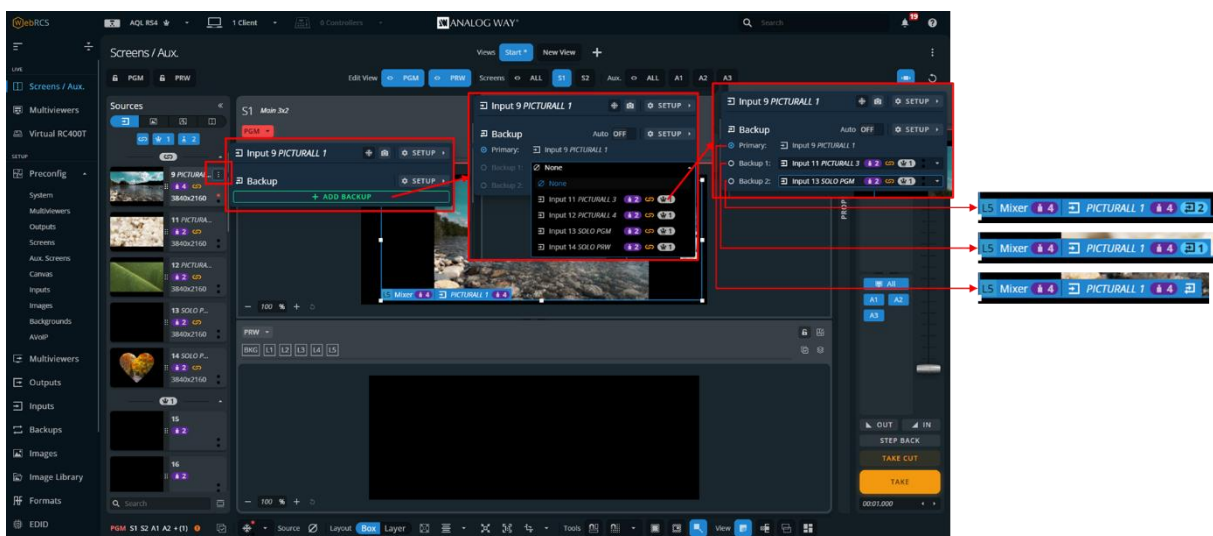


- Split layers can now be added one-by-one.
- In the multiviewer, the Preview widget is enhanced with wireframes including the type of layers.

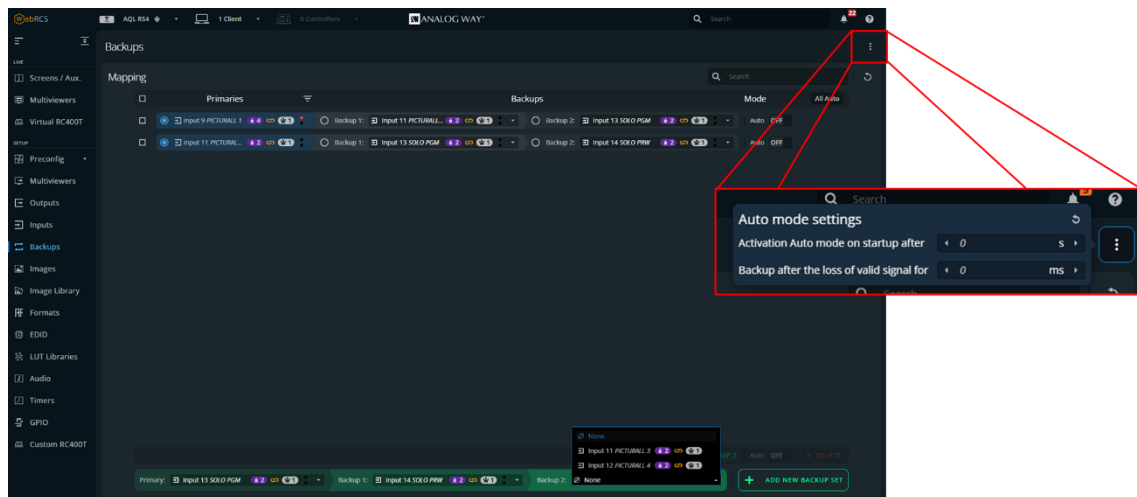


o Input backup

- It is now possible to define up to two backup sources for an input.
- These backup sources can be either a live input or a still image.
- The switching to backup source can be either manual or automatic.

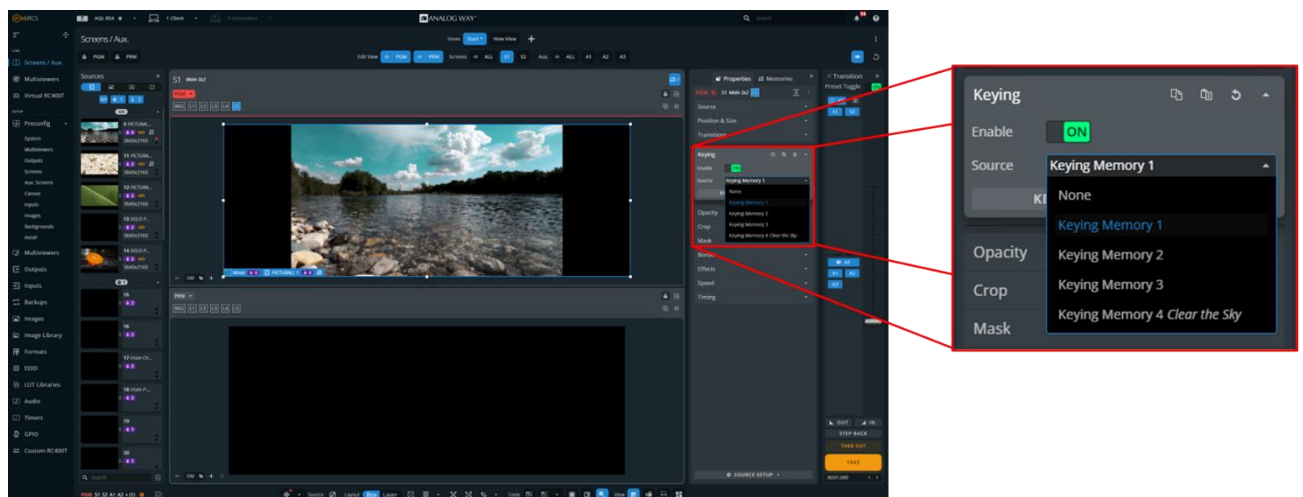


- Automatic switching is based on two criteria:
 - Loss of signal synchronization,
 - Loss of signal validity.



o Keying in the layers

- In addition to the existing keying at the input level, it is now possible to key the content of a layer. This keying is therefore included in the memories so it can be recalled at any moment.
- Chroma-key and Luma-key are available at the input and layer levels. AW CremaTTe 3D is only available at the input level.



o Web RCS Security

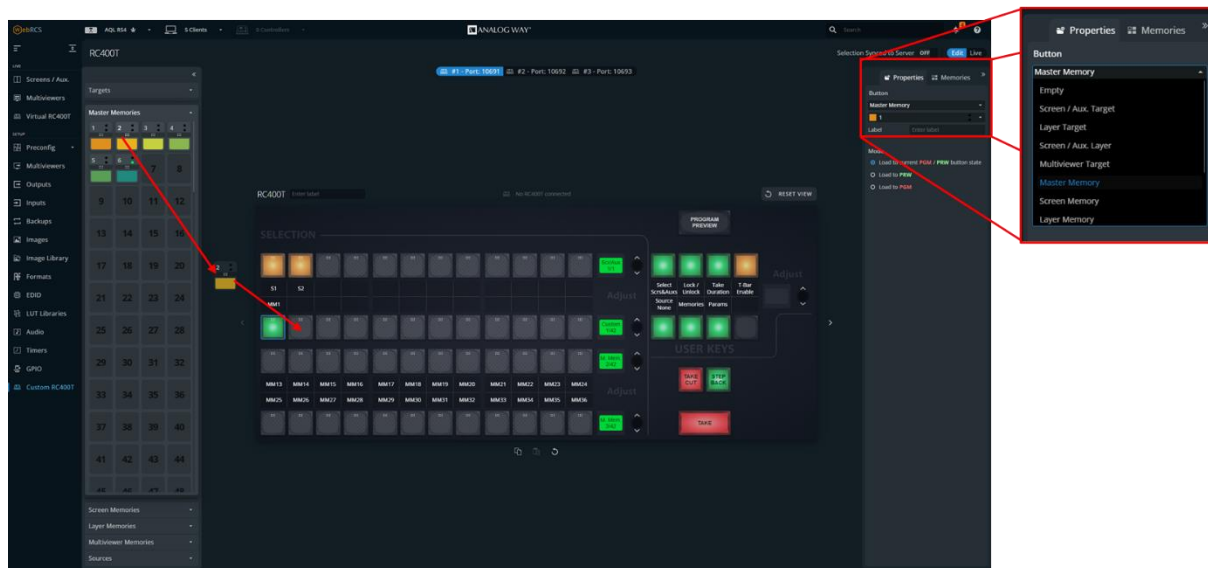
- When the basic authentication on the Web RCS is enabled, there is now a Lock/Logout button in the top right corner. This locks all the instances of the Web RCS in the web browser without having to close the tab or browser.



- The Web RCS session timeout is now 20 hours.

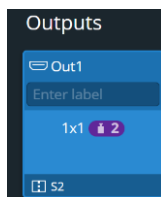
o Customization of RC400T

- It is now possible each key of the RC400T's "Selection" area.
- The custom configuration can be saved and recalled row-per-row or per panel.



o Web RCS UX/UI:

- The capacity indicator is modified to be more self-explanatory.



- When the basic authentication on the Web RCS is enabled, there is now a Lock/Logout button in the top right corner. This locks all the instances of the Web RCS in the Web browser without having to close the tab or browser.



- The header of the Web RCS is better managed when shrinking the window size.
- When saving a memory (Master/Screen/Layer), the window now closes when clicking "SAVE".
- When saving a Master memory, the last selected mode is now recalled for the next save.

Bug fixes:

- o Images don't persist into slots after deletion.
- o SVG files are now supported.
- o In a linked system, a warning now indicates that a Screen cannot be used as a source in a split layer or an auxiliary screen of a device when it contains outputs coming from another device.
- o Portrait format such as 2560x3200 and 2048x3584 at 59.94 or 60, don't cause stuttering on the outputs anymore.
- o It is now possible to reset SDVoE input and output cards without having to reboot all the system.
- o When deleting a LUT out of library while in use, its label is now also reset.
- o Resetting an HDMI output now restarts an HDCP negotiation properly.
- o On the Web RCS link discovery page, the MAC addresses of the follower devices are now correct.
- o 8bits+alpha PNG are now supported properly.
- o When using Cut and Fill at Layer level, FlipV works properly and does not perform a FlipH anymore.
- o The firmware update does not remain stuck at 0% anymore.
- o Cut & Fill is now working properly with DP inputs.
- o Cut & fill parameter are now saved correctly in layer memory.

To be implemented :

- o Support of 96kHz audio rate (both embedded and Dante audio).

Known issues and limitations:

- o **Linked system:**
 - A linked system can only be framelocked using the framelock input or an SDI input. Other signal types are not stable enough.
 - The linked system doesn't boot properly if the size of the image library exceeds 950MB.
- o **Aux. screens**
 - At startup, layer content is not properly scaled when using multiple Aux.
 - Transitioning a frozen auxiliary output , it still achieves a fade to black, even though it should not.
 - Plugs 1 and 3 of DP output cards configured as capacity 2 and with an output format
- o **Timers**
 - Timers are not perfectly synchronized if displayed on 2 outputs of the same screen but from 2 different Aquilon.
 - Timers may randomly be not be refreshed properly
- o **Inputs**
 - Input settings are not propagated on Grouped Inputs even if the Web RCS seems to indicate so.
 - It is not possible to create two 1x2 groups of capacity 4 on the same input card.
 - Input test patterns are not working for capacity 4 inputs.
 - In the SETUP>Preconfig>Inputs page, the UHD120 and 4K120 formats are not automatically picked properly.
 - The detection time of input signals may be much longer than it should.

- Some useless notifications are triggered at startup by the input backup feature but should not.
- The switching threshold of the Input Backup feature should contain the signal loss detection time.
- o **Outputs**
 - When plugs 1 and/or 3 of a DisplayPort output card are configured as capacity 2 with a format (custom or not) that has a width not a multiple of 16, a vertical line artefact appears on the output content.
- o **Web RCS**
 - Web RCS is not designed to support drag and drop on touch screen.

PREVIOUS VERSIONS

Products	Aquilon RS alpha, Aquilon RS1, Aquilon RS2, Aquilon RS3, Aquilon RS4, Aquilon RS5, Aquilon RS6, Aquilon C, Aquilon C+, Aquilon Cmax
Date	May 27 th , 2025
Version	4.04.81

The version (s) indicated here above has (have) been tested and validated by the QA Department.

Technical Notes:

Warnings:

DRIVERS:

- Updating to version 4.0.254 and above from 3.1.XX or lower requires to update :
 - Third party drivers and plugins such as Crestron, Companion, AMX or Q-SYS. New specific drivers are available on Analog Way's website.
 - AWJ commands: please refer to LivePremier_awj_programmers_guide_v4.0.pdf document available on Analog Way's website

Please do not use former drivers and former AWJ commands with version 4.0.254 or higher.

DANTE FEATURE:

- When using the Dante Domain Manager (DDM), please disconnect the device from the Dante network and reboot it before updating the firmware. After the update, reconnect it to the Dante network.
- To take advantages of functionalities provided by LivePremier:
 - Dante firmware update during LivePremier updater (version 2.2.79 and above)
 - Address MAC reading

A pre-requisite is to install AW Dante Firmware v3.7.0.16 (embedding Dante Firmware 4.2.3.13, available on Analog Way's website) using the Dante Firmware Update Manager tool before updating the LivePremier firmware.

DRAWBACKS:

- When updating to version 2.2.79 and above from a 1.x version, the following drawbacks may be encountered:
 - Any output configured with a capacity 2 but delivering a dual-resolution format (up to 2560x1600 @ 60hz) will have its capacity automatically changed to 1.
 - Due to the new implementation of Aux. Screens with several layers, the Screens Memories for these Auxiliary Screens must be checked after the update as the size of the previously existing layer is automatically forced to default 1920x1080.

New features and Improvements:

- o None

Bug fixes:

- o There are no more problems when importing images in the Image Library
- o The reference clock of DisplayPort outputs was fixed making these outputs work properly again
- o There are now more pink corrupted contents displayed in the widgets of the multiviewer outputs

To be implemented :

- o Support of 96kHz audio rate (both embedded and Dante audio)

Known issues and limitations:

- o A linked system can only be framelocked using the framelock input or an SDI input. Other signal types are not stable enough
- o The linked system doesn't boot properly if the size of the image library exceeds 950MB
- o At startup, layer content is not properly scaled when using multiple Aux
- o A shared image is only useable in background sets with the outputs of the unit it comes from
- o Timers are not perfectly synchronized if displayed on 2 outputs of the same screen but from 2 different Aquilon
- o "Allow Cross Effect" should be disabled by default for Aux layers but is not

Products	Aquilon RS alpha, Aquilon RS1, Aquilon RS2, Aquilon RS3, Aquilon RS4, Aquilon RS5, Aquilon RS6, Aquilon C, Aquilon C+, Aquilon Cmax
Date	April 1 st , 2025
Version	4.04.77

The version (s) indicated here above has (have) been tested and validated by the QA Department.

Technical Notes:

Warnings:

DRIVERS:

- Updating to version 4.0.254 and above from 3.1.XX or lower requires to update :
 - Third party drivers and plugins such as Crestron, Companion, AMX or Q-SYS. New specific drivers are available on Analog Way's website.
 - AWJ commands: please refer to LivePremier_awj_programmers_guide_v4.0.pdf document available on Analog Way's website

Please do not use former drivers and former AWJ commands with version 4.0.254 or higher.

DANTE FEATURE:

- When using the Dante Domain Manager (DDM), please disconnect the device from the Dante network and reboot it before updating the firmware. After the update, reconnect it to the Dante network.
- To take advantages of functionalities provided by LivePremier:
 - Dante firmware update during LivePremier updater (version 2.2.79 and above)
 - Address MAC reading

A pre-requisite is to install AW Dante Firmware v3.7.0.16 (embedding Dante Firmware 4.2.3.13, available on Analog Way's website) using the Dante Firmware Update Manager tool before updating the LivePremier firmware.

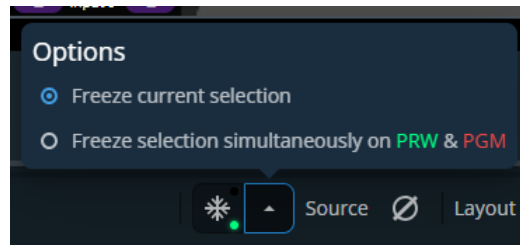
DRAWBACKS:

- When updating to version 2.2.79 and above from a 1.x version, the following drawbacks may be encountered:
 - Any output configured with a capacity 2 but delivering a dual-resolution format (up to 2560x1600 @ 60hz) will have its capacity automatically changed to 1.
 - Due to the new implementation of Aux. Screens with several layers, the Screens Memories for these Auxiliary Screens must be checked after the update as the size of the previously existing layer is automatically forced to default 1920x1080.

New features and Improvements:

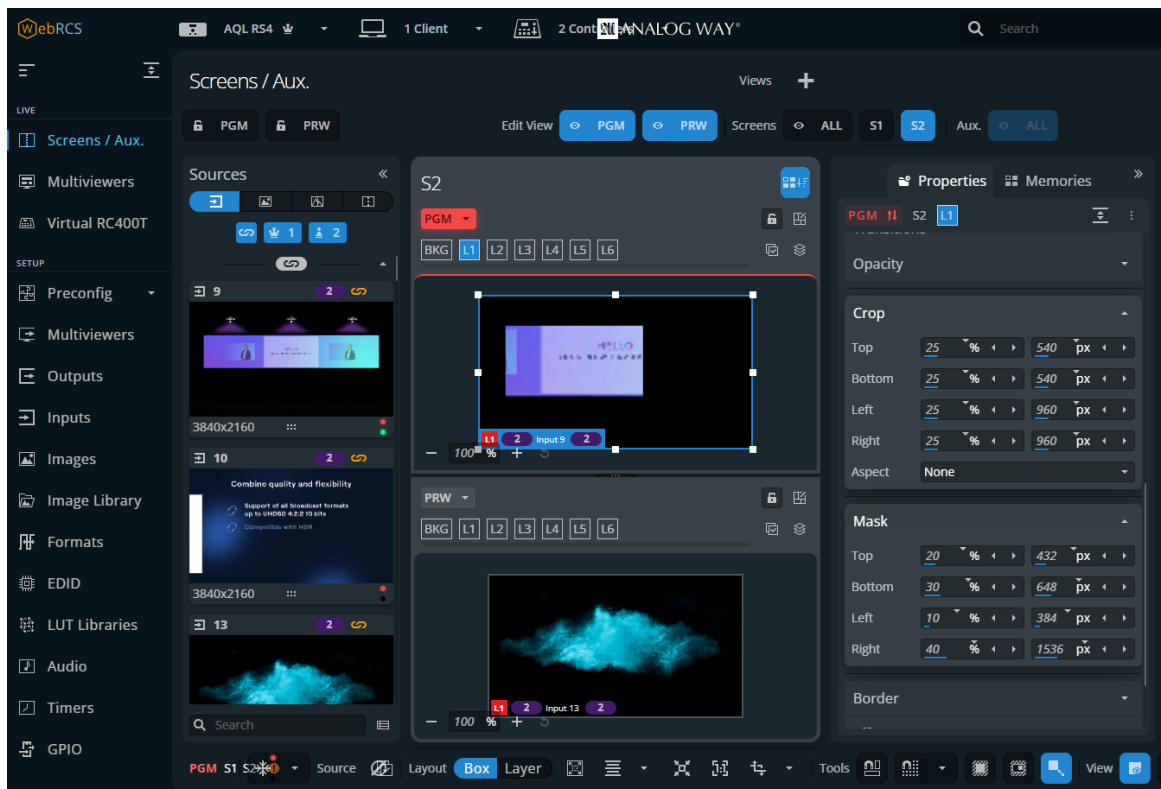
o Processing

- It is now possible to freeze individual layers. Layers can be frozen on Preview, Program, or both simultaneously using the layer freeze button in the bottom left of the Live>Screens/Aux page.

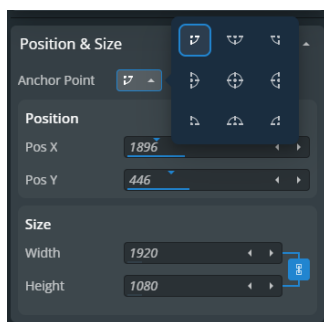


o Web RCS

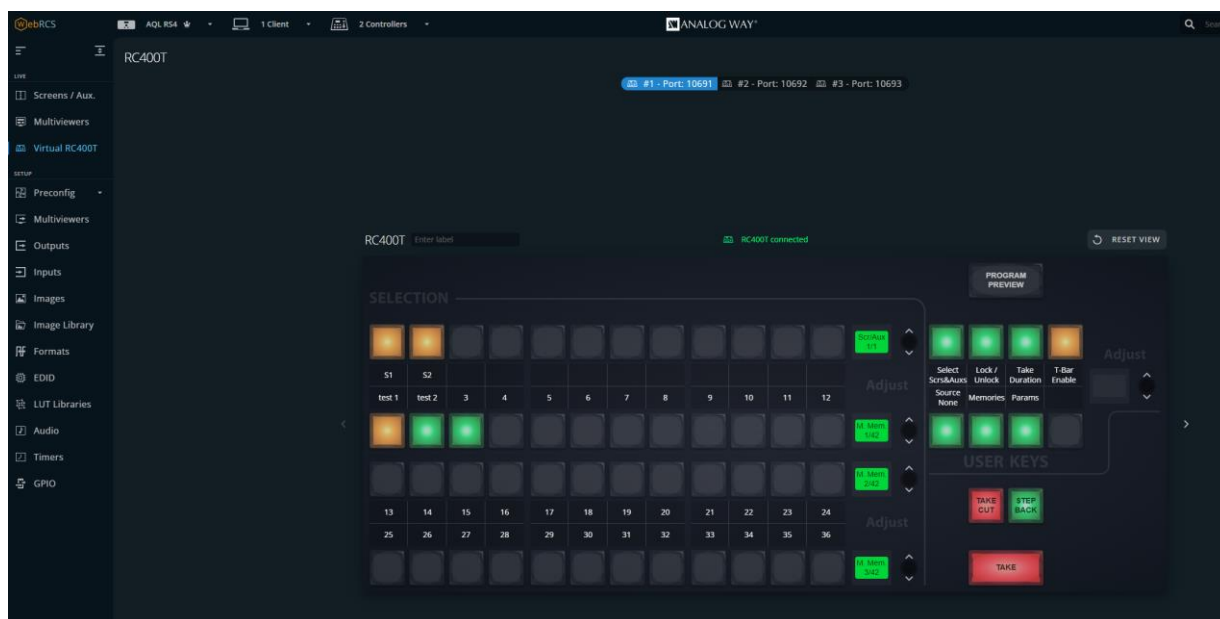
- In the Live> Screens/Aux. page, the layer thumbnails now follow the layer crop, mask and aspect ratio settings for an improved visualization



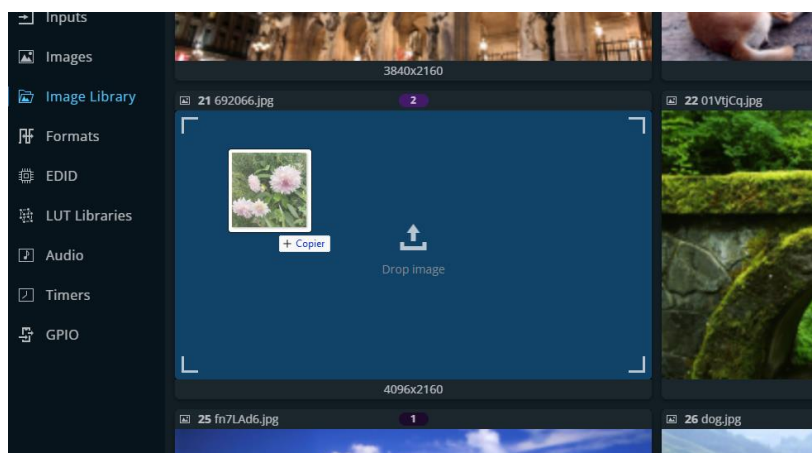
- It is now possible to modify the anchor points of layers in the Web RCS



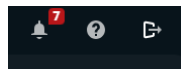
- Creation of Virtual RC400T-like interface in the Web RCS



- In the Web RCS, it is now possible to upload an image directly in a specific slot of the Image Library. Click on the slot to browse files or drag-and-drop an image onto the slot.



- A log out button is now available in the webRCS when authentication is enabled



- In the Link page, the Discover button was removed to simplify the link procedure.
 - In the Live>Screens/Aux. page, the Program is now locked by default
- o RC400T
 - When reconnecting to a switcher, the RC400T now retrieves its last known panel configuration
 - It is now possible to modify the anchor points of layers.
 - o Multiviewer
 - When the system is linked, an input widget now indicates if an input is shared and from which unit it comes from.



Bug fixes:

- o Synced inputs for cut and fill are now processed properly
- o When trying to save an image in a used slot of the image library, "This memory is already used" warning is now displayed
- o At the end of the update procedure, the system now systematically reboots properly
- o An error notification is now triggered when an input used in a background set is shared in a linked system
- o When multiviewer output 2 is a duplication of multiviewer output1, it now boots without pending modifications in the Preconfig. Summary
- o When one unit of a linked system is powered too late, the broken link is now handled properly and requires a reboot
- o The list of clonable outputs is now filtered properly: auxiliary outputs don't appear anymore
- o HDMI over fiber cards are now handled properly: increased reliability after reboot, generating and detecting signal much faster
- o The support of HDCP2 is significantly improved on HDMI outputs and multiviewers
- o In the Web RCS, "Analog Way" header is now always displayed properly
- o IP-SDI cards now better handle CPU and network overloads.
- o There are no more random pink lines appearing on multiviewer outputs
- o The Control Box 3 is now booting using the mode selected on the front panel
- o There are no more random outputs that flickers
- o Devices with a faulty audio card don't reboot infinitely anymore
- o There is no misleading notifications on the signal detection of the framelock input

- o Output format requiring a bandwidth too close to the limit between capacity 1 and 2 are now handled as capacity 2 but may be supported as capacity 1 by inputs
- o There are no more glitches and distorted widgets in the multiviewer outputs
- o 8bit RGBA PNG are now supported properly
- o 16bit RGBA PNG are now supported properly
- o After factory reset, an output looped to an input now works properly.
- o Audio of the HDMI over fiber input 5 is now rooted to DANTE properly

To be implemented :

- o Support of 96kHz audio rate (both embedded and Dante audio)

Known issues and limitations:

- o A linked system can only be framelocked using the framelock input or an SDI input. Other signal types are not stable enough
- o The linked system doesn't boot properly if the size of the image library exceeds 950MB
- o At startup, layer content is not properly scaled when using multiple Aux
- o A shared image is only useable in background sets with the outputs of the unit it comes from
- o Timers are not perfectly synchronized if displayed on 2 outputs of the same screen but from 2 different Aquilon
- o "Allow Cross Effect" should be disabled by default for Aux layers but is not

Products	Aquilon RS alpha, Aquilon RS1, Aquilon RS2, Aquilon RS3, Aquilon RS4, Aquilon RS5, Aquilon RS6, Aquilon C, Aquilon C+, Aquilon Cmax
Date	March 28 th , 2024
Version	4.03.43

The version (s) indicated here above has (have) been tested and validated by the QA Department.

Technical Notes:

Warnings:

DRIVERS:

- Updating to version 4.0.254 and above from 3.1.XX or lower requires to update :
 - Third party drivers and plugins such as Crestron, Companion, AMX or Q-SYS. New specific drivers are available on Analog Way's website.
 - AWJ commands: please refer to LivePremier_awj_programmers_guide_v4.0.pdf document available on Analog Way's website

Please do not use former drivers and former AWJ commands with version 4.0.254 or higher.

DANTE FEATURE:

- When using the Dante Domain Manager (DDM), please disconnect the device from the Dante network and reboot it before updating the firmware. After the update, reconnect it to the Dante network.
- To take advantages of functionalities provided by LivePremier:
 - Dante firmware update during LivePremier updater (version 2.2.79 and above)
 - Address MAC reading

A pre-requisite is to install AW Dante Firmware v3.7.0.16 (embedding Dante Firmware 4.2.3.13, available on Analog Way's website) using the Dante Firmware Update Manager tool before updating the LivePremier firmware.

DRAWBACKS:

- When updating to version 2.2.79 and above from a 1.x version, the following drawbacks may be encountered:
 - Any output configured with a capacity 2 but delivering a dual-resolution format (up to 2560x1600 @ 60hz) will have its capacity automatically changed to 1.
 - Due to the new implementation of Aux. Screens with several layers, the Screens Memories for these Auxiliary Screens must be checked after the update as the size of the previously existing layer is automatically forced to default 1920x1080.

New features and Improvements:

- o None

Bug fixes:

- o There are no more update failures depending on the hardware revision.

To be implemented :

- o Support of 96kHz audio rate (both embedded and Dante audio).

Known issues:

- o The linked system doesn't boot properly if the size of the image library exceeds 950MB.
- o At startup, layer content is not properly scaled when using multiple Aux
- o A shared image is only useable in background sets with the outputs of the unit it comes from.
- o Timers are not perfectly synchronized if displayed on 2 outputs of the same screen but from 2 different Aquilon.
- o Transparency of 8bits+alpha PNG doesn't work.
- o "Allow Cross Effect" must be disabled by default for Aux layers

Products	Aquilon RS alpha, Aquilon RS1, Aquilon RS2, Aquilon RS3, Aquilon RS4, Aquilon RS5, Aquilon RS6, Aquilon C, Aquilon C+, Aquilon Cmax
Date	December 12 th , 2024
Version	4.03.42

The version (s) indicated here above has (have) been tested and validated by the QA Department.

.....

Technical Notes:

Warnings:

DRIVERS:

- Updating to version 4.0.254 and above from 3.1.XX or lower requires to update :
 - Third party drivers and plugins such as Crestron, Companion, AMX or Q-SYS. New specific drivers are available on Analog Way's website.
 - AWJ commands: please refer to LivePremier_awj_programmers_guide_v4.0.pdf document available on Analog Way's website

Please do not use former drivers and former AWJ commands with version 4.0.254 or higher.

DANTE FEATURE:

- When using the Dante Domain Manager (DDM), please disconnect the device from the Dante network and reboot it before updating the firmware. After the update, reconnect it to the Dante network.
- To take advantages of functionalities provided by LivePremier:
 - Dante firmware update during LivePremier updater (version 2.2.79 and above)
 - Address MAC reading

A pre-requisite is to install AW Dante Firmware v3.7.0.16 (embedding Dante Firmware 4.2.3.13, available on Analog Way's website) using the Dante Firmware Update Manager tool before updating the LivePremier firmware.

DRAWBACKS:

- When updating to version 2.2.79 and above from a 1.x version, the following drawbacks may be encountered:
 - Any output configured with a capacity 2 but delivering a dual-resolution format (up to 2560x1600 @ 60hz) will have its capacity automatically changed to 1.
 - Due to the new implementation of Aux. Screens with several layers, the Screens Memories for these Auxiliary Screens must be checked after the update as the size of the previously existing layer is automatically forced to default 1920x1080.

New features and Improvements:

- o None

Bug fixes:

- o HDMI multiviewer outputs with a 4K30 format don't have visual defects anymore when the internal rate is 60Hz
- o Random outputs don't flicker anymore

To be implemented :

- o Support of 96kHz audio rate (both embedded and Dante audio).

Known issues:

- o The linked system doesn't boot properly if the size of the image library exceeds 950MB.
- o At startup, layer content is not properly scaled when using multiple Aux
- o A shared image is only useable in background sets with the outputs of the unit it comes from.
- o Timers are not perfectly synchronized if displayed on 2 outputs of the same screen but from 2 different Aquilon.
- o Transparency of 8bits+alpha PNG doesn't work.
- o "Allow Cross Effect" must be disabled by default for Aux layers

Products	Aquilon RS alpha, Aquilon RS1, Aquilon RS2, Aquilon RS3, Aquilon RS4, Aquilon RS5, Aquilon RS6, Aquilon C, Aquilon C+, Aquilon Cmax
Date	November 12 th , 2024
Version	4.03.38

The version (s) indicated here above has (have) been tested and validated by the QA Department.

Technical Notes:

Warnings:

DRIVERS:

- Updating to version 4.0.254 and above from 3.1.XX or lower requires to update :
 - Third party drivers and plugins such as Crestron, Companion, AMX or Q-SYS. New specific drivers are available on Analog Way's website.
 - AWJ commands: please refer to LivePremier_awj_programmers_guide_v4.0.pdf document available on Analog Way's website

Please do not use former drivers and former AWJ commands with version 4.0.254 or higher.

DANTE FEATURE:

- When using the Dante Domain Manager (DDM), please disconnect the device from the Dante network and reboot it before updating the firmware. After the update, reconnect it to the Dante network.
- To take advantages of functionalities provided by LivePremier:
 - Dante firmware update during LivePremier updater (version 2.2.79 and above)
 - Address MAC reading

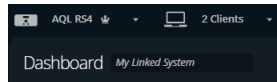
A pre-requisite is to install AW Dante Firmware v3.7.0.16 (embedding Dante Firmware 4.2.3.13, available on Analog Way's website) using the Dante Firmware Update Manager tool before updating the LivePremier firmware.

DRAWBACKS:

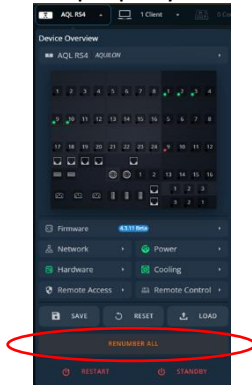
- When updating to version 2.2.79 and above from a 1.x version, the following drawbacks may be encountered:
 - Any output configured with a capacity 2 but delivering a dual-resolution format (up to 2560x1600 @ 60hz) will have its capacity automatically changed to 1.
 - Due to the new implementation of Aux. Screens with several layers, the Screens Memories for these Auxiliary Screens must be checked after the update as the size of the previously existing layer is automatically forced to default 1920x1080.

New features and Improvements:

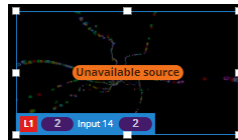
- o A Linked system now has a name



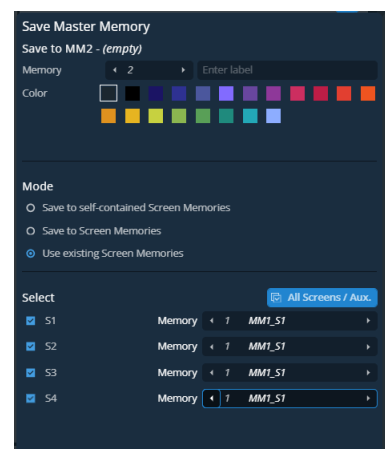
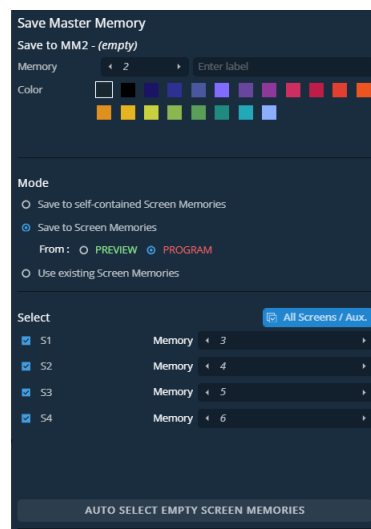
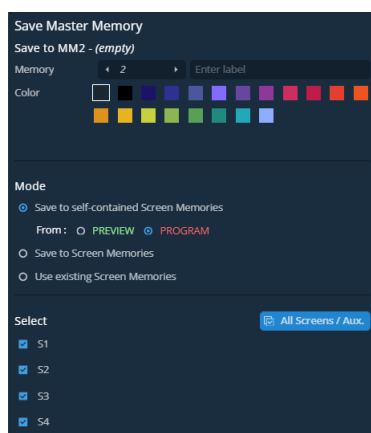
- o The replacement of input cards by ones with a different number of plugs is now managed properly



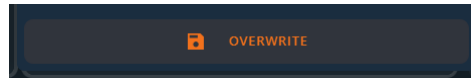
- o The notification system for hardware inconsistencies is improved
- o In the Live/Screens page, a warning is now displayed on the layers containing a non-reachable local input/image



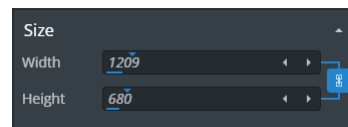
- o Simplify and improve the mode selection of Master memory saving
 - Default mode is now "Save to self-contained Screen memories"
 - When saving a Master Memory to Screen Memories, empty memories are now proposed by default



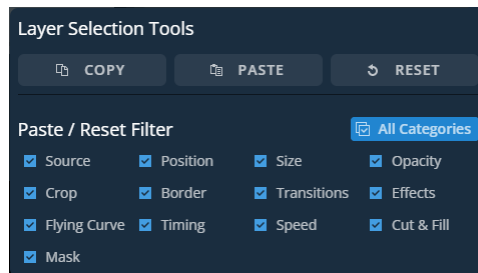
- o The process of overwriting of a memory (master/screen/layer, config, formats ...) is now consistent everywhere in the Web RCS



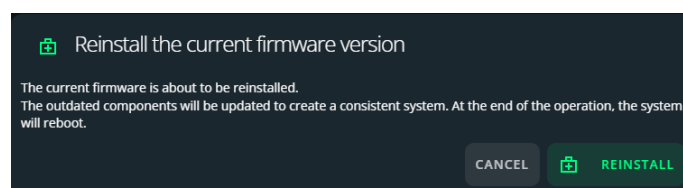
- o The "Toggle empty / preempted items visibility" parameter is now enabled by default in the Live> Screen/Auxes page
- o The "Toggle keep aspect ratio mode" parameter is now disabled by default in the Live>Multiviewers page
- o The "Toggle keep aspect ratio mode" of the viewer is now synchronized with the size link in the layer/widget properties' size section



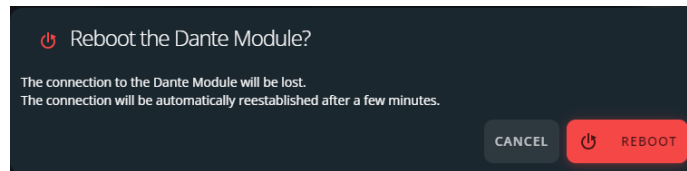
- o The filter in the Copy/Paste/Reset pop-up of layer properties is also used for Reset



- o In the SET>Preconfing>Canvas page, the dimension of the screen grid size is increased from 16x16 to 64x64
- o In the SETUP>Preconfig>Backgrounds page, the Shared Inputs/Image section is now removed for clearer understanding
- o A modal window is added to confirm the launch of firmware (re-)installation



- o Firmware update of the Audinate Dante firmware:
 - For Brooklyn 2 module to version 4.2.3.13
 - For Brooklyn 3 module to version 4.2.9.4
- o In Dante page, a confirmation message is added to provide state feedback once the "Reboot" button or "Factory reset" button are pressed



- o The Timer values are now sent over the network :
`{"path":"DeviceObject/$timer/@items/TIMER_n/control/@props/value","value":62039005}`

Bug fixes:

- o There are no more white sparkley white lines on outputs
- o There are no more troubles with Samsung's SBOX receivers when rebooting the unit
- o The units don't stop responding anymore
- o The Web RCS doesn't stop working anymore
- o There are no more situations where the operator can't assign layers to screen even if there are free resources
- o The backgrounds are now displayed properly when the internal rate is 29.97Hz
- o The Custom Formats can now be deleted
- o Updating the Output assignments within regions now keep the layers visible and available
- o Sources with a 59.94Hz rate don't stutter anymore when the internal rate is 59.94Hz
- o The unit doesn't detect audio signal anymore when nothing is connected
- o DP inputs now report the rate based on an actual pixel clock instead of a theoretical pixel clock
- o The outputs of a unit with the same rate are now systematically synchronized
- o Unsolvable link problem after reboot don't happen anymore
- o When updating a linked system, if the follower's update is completed before the leader's update then the modal window displays too early
- o The "unprocessed"/"partially unprocessed" statuses are now displayed systematically
- o The list of supported formats by SDVoE output cards is now filtered properly
- o When a 1080p source is connected to an SDI plug of the IP-SDI card, the generic input board doesn't crash anymore

To be implemented :

- o Support of 96kHz audio rate (both embedded and Dante audio).

Known issues:

- o The linked system doesn't boot properly if the size of the image library exceeds 950MB.
- o At startup, layer content is not properly scaled when using multiple Aux
- o A shared image is only useable in background sets with the outputs of the unit it comes from.
- o Timers are not perfectly synchronized if displayed on 2 outputs of the same screen but from 2 different Aquilon.
- o Transparency of 8bits+alpha PNG doesn't work.
- o "Allow Cross Effect" must be disabled by default for Aux layers

Products	Aquilon RS alpha, Aquilon RS1, Aquilon RS2, Aquilon RS3, Aquilon RS4, Aquilon RS5, Aquilon RS6, Aquilon C, Aquilon C+, Aquilon Cmax
Date	August 26 th , 2024
Version	4.02.17

The version (s) indicated here above has (have) been tested and validated by the QA Department.

Technical Notes:

Warnings:

DRIVERS:

- Updating to version 4.0.254 and above from 3.1.XX or lower requires to update :
 - Third party drivers and plugins such as Crestron, Companion, AMX or Q-SYS. New specific drivers are available on Analog Way's website.
 - AWJ commands: please refer to LivePremier_awj_programmers_guide_v4.0.pdf document available on Analog Way's website

Please do not use former drivers and former AWJ commands with version 4.0.254 or higher.

DANTE FEATURE:

- When using the Dante Domain Manager (DDM), please disconnect the device from the Dante network and reboot it before updating the firmware. After the update, reconnect it to the Dante network.
- To take advantages of functionalities provided by LivePremier:
 - Dante firmware update during LivePremier updater (version 2.2.79 and above)
 - Address MAC reading

A pre-requisite is to install AW Dante Firmware v3.7.0.16 (embedding Dante Firmware 4.2.3.13, available on Analog Way's website) using the Dante Firmware Update Manager tool before updating the LivePremier firmware.

DRAWBACKS:

- When updating to version 2.2.79 and above from a 1.x version, the following drawbacks may be encountered:
 - Any output configured with a capacity 2 but delivering a dual-resolution format (up to 2560x1600 @ 60hz) will have its capacity automatically changed to 1.
 - Due to the new implementation of Aux. Screens with several layers, the Screens Memories for these Auxiliary Screens must be checked after the update as the size of the previously existing layer is automatically forced to default 1920x1080.

New features and Improvements:

- o None.

Bug fixes:

- o 12G-SDI and 12G-SFP outputs cards are now updated properly when installed in the Share slot.
- o Whatever their resolutions and rates, SDI sources do not stutter anymore.
- o The IP-SDI cards don't make the generic input card crash anymore when receeiving SDI content.

Known issues:

- o When the Dante network clock is set to 96kHz, audio is not working anymore (both embedded and Dante audio).
- o The linked system doesn't boot properly if the size of the image library exceeds 950MB.
- o At startup, layer content is not properly scaled when using multiple Aux.
- o A shared image is only useable in background sets with the outputs of the unit it comes from.
- o Timers are not perfectly synchronized if displayed on 2 outputs of the same screen but from 2 differents Aquilon.

Products	Aquilon RS alpha, Aquilon RS1, Aquilon RS2, Aquilon RS3, Aquilon RS4, Aquilon RS5, Aquilon RS6, Aquilon C, Aquilon C+, Aquilon Cmax
Date	July 24 th , 2024
Version	4.02.15

The version (s) indicated here above has (have) been tested and validated by the QA Department.

Technical Notes:

Warnings:

DRIVERS:

- Updating to version 4.0.254 and above from 3.1.XX or lower requires to update :
 - Third party drivers and plugins such as Crestron, Companion, AMX or Q-SYS. New specific drivers are available on Analog Way's website.
 - AWJ commands: please refer to LivePremier_awj_programmers_guide_v4.0.pdf document available on Analog Way's website

Please do not use former drivers and former AWJ commands with version 4.0.254 or higher.

DANTE FEATURE:

- When using the Dante Domain Manager (DDM), please disconnect the device from the Dante network and reboot it before updating the firmware. After the update, reconnect it to the Dante network.
- To take advantages of functionalities provided by LivePremier:
 - Dante firmware update during LivePremier updater (version 2.2.79 and above)
 - Address MAC reading

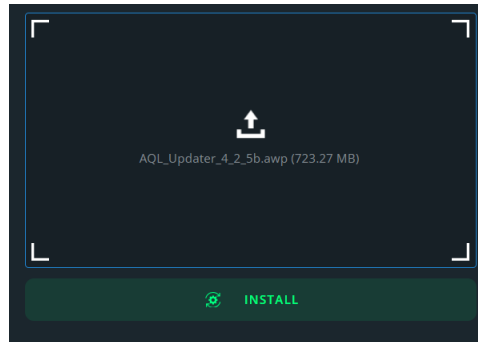
A pre-requisite is to install AW Dante Firmware v3.7.0.16 (embedding Dante Firmware 4.2.3.13, available on Analog Way's website) using the Dante Firmware Update Manager tool before updating the LivePremier firmware.

DRAWBACKS:

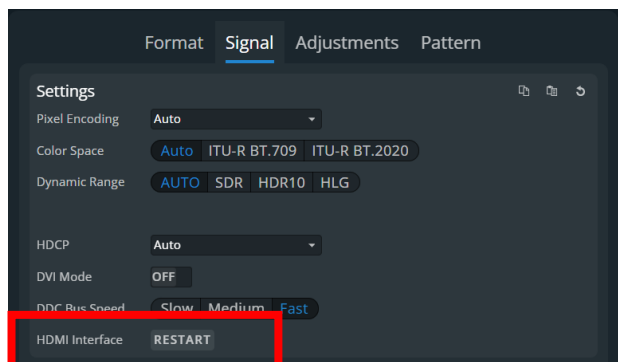
- When updating to version 2.2.79 and above from a 1.x version, the following drawbacks may be encountered:
 - Any output configured with a capacity 2 but delivering a dual-resolution format (up to 2560x1600 @ 60hz) will have its capacity automatically changed to 1.
 - Due to the new implementation of Aux. Screens with several layers, the Screens Memories for these Auxiliary Screens must be checked after the update as the size of the previously existing layer is automatically forced to default 1920x1080.

New features and Improvements:

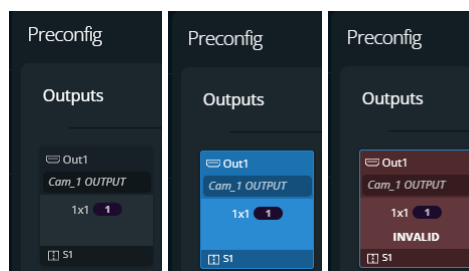
- o Hardware
 - Software optimization of hardware settings.
- o System
 - The firmware update is now simplified: clicking on Install launches the firmware upload to the device, its extraction and installation.



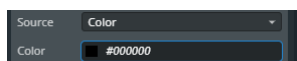
- o Outputs:
 - It is now possible to reset the HDMI output interface if some HDCP problems should be encountered.



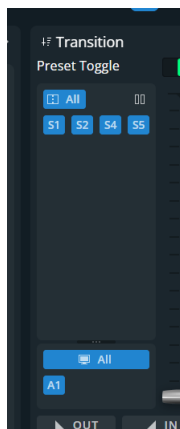
- o Audio:
 - The default mode of the Dante interface is now “Redundant” instead of “Switched”.
- o Web RCS:
 - In the Preconfig, improvement of Input/output/image cards were improved to have the same look and feel and now change color to indicate when there is an error.



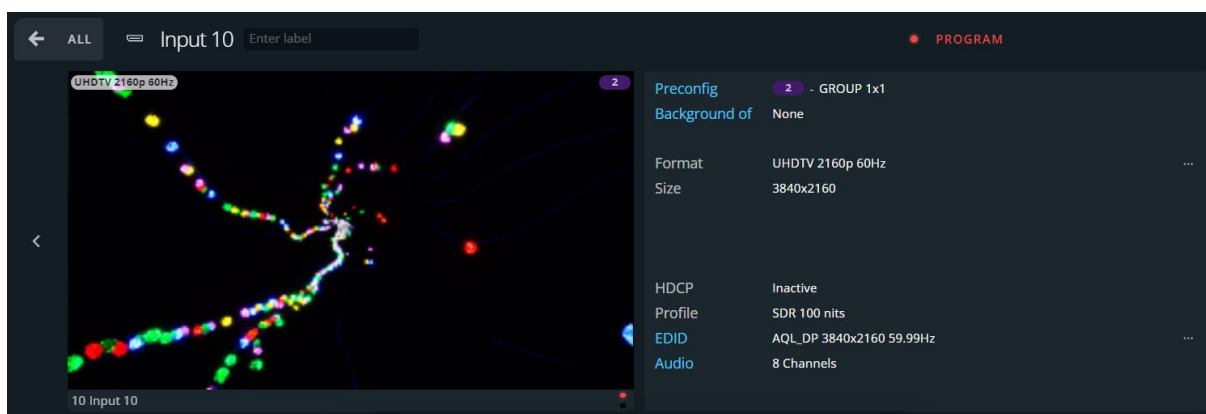
- The # is now automatically written when typing a color code.



- It is now possible to change the number of columns in the Transition panel of the Live pages.



- The statuses for inputs and outputs are now written in an homogeneous and consistent way.



Bug fixes:

- o The multiviewer outputs always start properly now with a correct content in the widgets.
- o The DPH104 doesn't deliver broken content anymore after a few hours.
- o When the multiviewer output of a follower is connected to a DPH104 mode and the multiviewers are global, the inputs coming from this follower are now routed properly into the multiviewers.
- o The Dante card now exits the domain it is enrolled in, when its Factory reset is performed.
- o HDR infoframes of SDI outputs are now properly sent.

Known issues:

- o When the Dante network clock is set to 96kHz, audio is not working anymore (both embedded and Dante audio).
- o The linked system doesn't boot properly if the size of the image library exceeds 950MB.
- o At startup, layer content is not properly scaled when using multiple Aux.
- o A shared image is only useable in background sets with the outputs of the unit it comes from.
- o Timers are not perfectly synchronized if displayed on 2 outputs of the same screen but from 2 different Aquilon.

Products	Aquilon RS alpha, Aquilon RS1, Aquilon RS2, Aquilon RS3, Aquilon RS4, Aquilon RS5, Aquilon RS6, Aquilon C, Aquilon C+, Aquilon Cmax
Date	June 17 th , 2024
Version	4.01.38

The version (s) indicated here above has (have) been tested and validated by the QA Department.

Technical Notes:

Warnings:

DRIVERS:

- Updating to version 4.0.254 and above from 3.1.XX or lower requires to update :
 - Third party drivers and plugins such as Crestron, Companion, AMX or Q-SYS. New specific drivers are available on Analog Way's website.
 - AWJ commands: please refer to LivePremier_awj_programmers_guide_v4.0.pdf document available on Analog Way's website

Please do not use former drivers and former AWJ commands with version 4.0.254 or higher.

DANTE FEATURE:

- When using the Dante Domain Manager (DDM), please disconnect the device from the Dante network and reboot it before updating the firmware. After the update, reconnect it to the Dante network.
- To take advantages of functionalities provided by LivePremier:
 - Dante firmware update during LivePremier updater (version 2.2.79 and above)
 - Address MAC reading

A pre-requisite is to install AW Dante Firmware v3.7.0.16 (embedding Dante Firmware 4.2.3.13, available on Analog Way's website) using the Dante Firmware Update Manager tool before updating the LivePremier firmware.

DRAWBACKS:

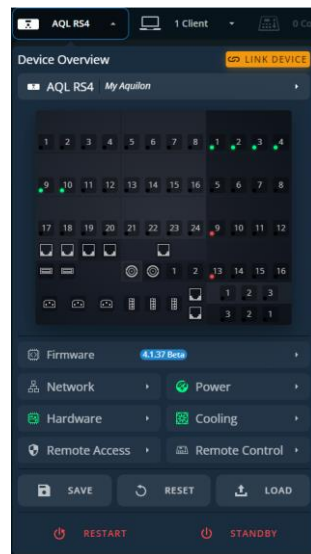
- When updating to version 2.2.79 and above from a 1.x version, the following drawbacks may be encountered:
 - Any output configured with a capacity 2 but delivering a dual-resolution format (up to 2560x1600 @ 60hz) will have its capacity automatically changed to 1.
 - Due to the new implementation of Aux. Screens with several layers, the Screens Memories for these Auxiliary Screens must be checked after the update as the size of the previously existing layer is automatically forced to default 1920x1080.

New features and Improvements:

- o Hardware
 - Support of new components (optimization of hardware settings).
- o System:
 - The loading time of complex Master memories is now significantly reduced.
- o Web RCS:
 - It is now possible to switch off the visibility of inputs/images in sources lists. Useful to hide unused sources. The setting is available in the pages SETUP>Preconfig>Inputs and SETUP>Preconfig>Images. Please note that this setting also works with the RC400T controller.



- Link feature:
 - When working as a standalone unit, the user path to the Device Overview page is shortened (no dashboard page).



VS

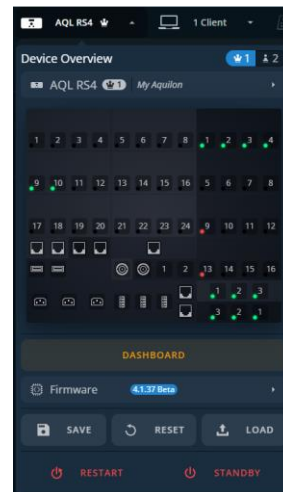
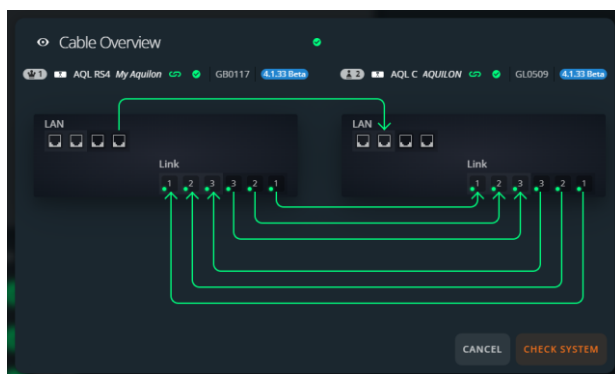
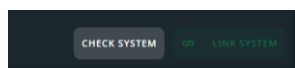


Figure 1: System pop-up window in standalone mode versus in linked mode

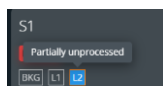
- The web RCS interface now shows the cabling to help fix the potential error



- The Link procedure is now composed of two steps : first check the cables and then launch the link.



- in the Setup>Preconfig>Outputs / Screens/ Inputs / Images pages, when several units are linked, it is now possible to multi-select items from several units with Shift+Click or Ctrl+Click.
- In the Live pages, it is not possible anymore to remove a source from all backgrounds it belongs to.
- In the Live > Screen / Aux. page, a tool tip is added to the layer icon when it is orange because it is partially/fully unprocessed.



- In the Live> Screens/Aux. and Live>Multiviewers pages, each shared input/image is now displayed only once in the source list to avoid confusion.

Bug fixes:

- o The eight HDMI 1.4 input card now systemically starts properly at boot.
- o Two IP-SDI input cards connected to the same generic input card now work.
- o Custom rate 59,94Hz now works for SDI outputs 3, 7, 11 and 15.
- o 1080p 23,98sF and 1080p 59,94Hz formats are now properly received on SDI inputs.
- o The input deinterlacer reaches its full performances again.
- o The LUT list of Input Crematte 3D is now valid after startup.
- o Crematte 3D keying algorithm doesn't generate a slight haze on the keyed area anymore.
- o When using the input cut&fill feature, the default cut source is set to None. In version 4.0.254, input 1 was generating an error most of the time not as it doesn't match the Cut source constraint (belonging to the same input card).
- o There is no more an erroneous column displayed in the middle of of a layer depending on the layer position.
- o Still images are now systematically displayed properly.

- o In the Preconfig > Outputs page, when an output is disabled because of an auxiliary screen with capacity > 2, it can't be configured as a clone output (but still can be used as a duplication of the auxiliary screen).
- o In the Preconfig > Screens page, it is not possible anymore to erroneously create a layer without an assigned region.
- o In the Preconfig > Screens page, the number of preempted resources is now correct for screens in split layer mode.
- o In the Save/Load pages, unused columns have been removed.
- o In the Live>Screens/Aux. page, It is possible again to drag and drop a screen in a split layer.
- o When "Allow cross effect" is disabled, a difference of layer mask between Program and Preview now forces a fade out/fade in.
- o When a linked system is shutting down, the outputs don't blink anymore.
- o When using the Dante Domain Manager, the connection of the device with its Dante interface is not lost anymore.

Known issues:

- o When the Dante network clock is set to 96kHz, audio is not working anymore (both embedded and Dante audio)
- o The linked system doesn't boot properly if the size of the image library exceeds 950MB.
- o At startup, layer content is not properly scaled when using multiple Aux.
- o A shared image is only useable in background sets with the outputs of the unit it comes from.
- o Timers are not perfectly synchronized if displayed on 2 outputs of the same screen but from 2 different Aquilon.

Products	Aquilon RS alpha, Aquilon RS1, Aquilon RS2, Aquilon RS3, Aquilon RS4, Aquilon RS5, Aquilon RS6, Aquilon C, Aquilon C+, Aquilon Cmax
Date	May 6 th , 2024
Version	4.0.256

The version (s) indicated here above has (have) been tested and validated by the QA Department.

Technical Notes:

Warnings:

DRIVERS:

- Updating to version 4.0.254 and above from 3.1.XX or lower requires to update :
 - Third party drivers and plugins such as Crestron, Companion, AMX or Q-SYS. New specific drivers are available on Analog Way's website.
 - AWJ commands: please refer to LivePremier_awj_programmers_guide_v4.0.pdf document available on Analog Way's website

Please do not use former drivers and former AWJ commands with version 4.0.254 or higher.

DANTE FEATURE:

- To take advantages of functionalities provided by LivePremier:
 - Dante firmware update during LivePremier updater (version 2.2.79 and above)
 - Address MAC reading

A pre-requisite is to install AW Dante Firmware v3.7.0.16 (embedding Dante Firmware 4.2.0.28, available on Analog Way's website) using the Dante Firmware Update Manager tool before updating the LivePremier firmware.

DRAWBACKS:

- When updating to version 2.2.79 and above from a 1.x version, the following drawbacks may be encountered:
 - Any output configured with a capacity 2 but delivering a dual-resolution format (up to 2560x1600 @ 60hz) will have its capacity automatically changed to 1.
 - Due to the new implementation of Aux. Screens with several layers, the Screens Memories for these Auxiliary Screens must be checked after the update as the size of the previously existing layer is automatically forced to default 1920x1080.

New features and Improvements:

- o Support of new components (optimization of hardware settings)

Bug fixes:

- o A darker column is no longer displayed in the middle of layers depending on their position
- o When "Allow cross effect" is disabled, a difference of layer mask between Program and Preview now forces a fade out/fade in
- o The number of preempted resources is now correct for screens in split layer mode
- o When an 8-plug HDMI 1.4 input card and an IP-SDI input card are side-by-side, the update process now works systematically

Known issues:

- o It is not possible to drag and drop a screen into a split layer
- o When the Dante network clock is set to 96kHz, audio is not working anymore (both embedded and Dante audio)
- o The linked system doesn't boot if the size of the image library exceeds 1.2GB.
- o At startup, layer content is not properly scaled when using multiple Aux
- o A shared input or image is not useable in background sets with the outputs of the unit it comes from
- o Timers are not perfectly synchronized if displayed on 2 outputs of the same screen but from 2 different Aquilon

Products	Aquilon RS alpha, Aquilon RS1, Aquilon RS2, Aquilon RS3, Aquilon RS4, Aquilon RS5, Aquilon RS6, Aquilon C, Aquilon C+, Aquilon Cmax
Date	March 18 th , 2024
Version	4.0.254

The version (s) indicated here above has (have) been tested and validated by the QA Department.

Technical Notes:

Warnings:

DRIVERS:

- Updating to version 4.0.254 and above from 3.1.XX or lower requires to update :
 - Third party drivers and plugins such as Crestron, Companion, AMX or Q-SYS. New specific drivers are available on Analog Way's website.
 - AWJ commands: please refer to LivePremier_awj_programmers_guide_v4.0.pdf document available on Analog Way's website

Please do not use former drivers and former AWJ commands with version 4.0.254 or higher.

DANTE FEATURE:

- To take advantages of functionalities provided by LivePremier:
 - Dante firmware update during LivePremier updater (version 2.2.79 and above)
 - Address MAC reading

A pre-requisite is to install AW Dante Firmware v3.7.0.16 (embedding Dante Firmware 4.2.0.28, available on Analog Way's website) using the Dante Firmware Update Manager tool before updating the LivePremier firmware.

DRAWBACKS:

- When updating to version 2.2.79 and above from a 1.x version, the following drawbacks may be encountered:
 - Any output configured with a capacity 2 but delivering a dual-resolution format (up to 2560x1600 @ 60hz) will have its capacity automatically changed to 1.
 - Due to the new implementation of Aux. Screens with several layers, the Screens Memories for these Auxiliary Screens must be checked after the update as the size of the previously existing layer is automatically forced to default 1920x1080.

New features and Improvements:**o Link feature**

- Add the possibility to link up to four LivePremier units (any type, any size) in a Leader/Followers configuration
- Add the possible to share up to eight 4K60 inputs or sixteen 2K/dual inputs among the linked devices
- Add the possibility to control the linked devices as a single system using the leader's Web RCS
- Link option is available for :
 - C series : hardware options OPT-AQL-LINK and OPT-AQL-OUT-LINK-QSFP
 - RS series : optional hardware upgrade OPT-RSX-LINK

o Hardware

- Support of the new 6RU LivePremier units :
 - Aquilon RS5 (ref. AQL-RS5)
 - Aquilon RS6 (ref. AQL-RS6)
 - Aquilon Cmax (ref. AQL-CMAX)
- Support of the 8x HDMI 1.4 input card (ref. ACC-AQL-IN-HDMI1.4)
- Support of the nex QSFP+ connector link card (ref. ACC-AQL-OUT-LINK-QSFP)
- Support of new hardware revisions

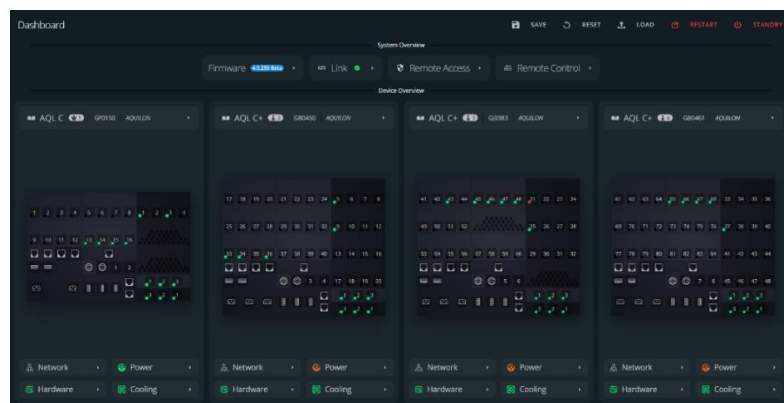
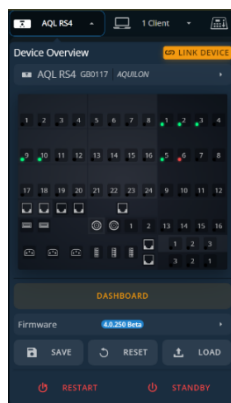
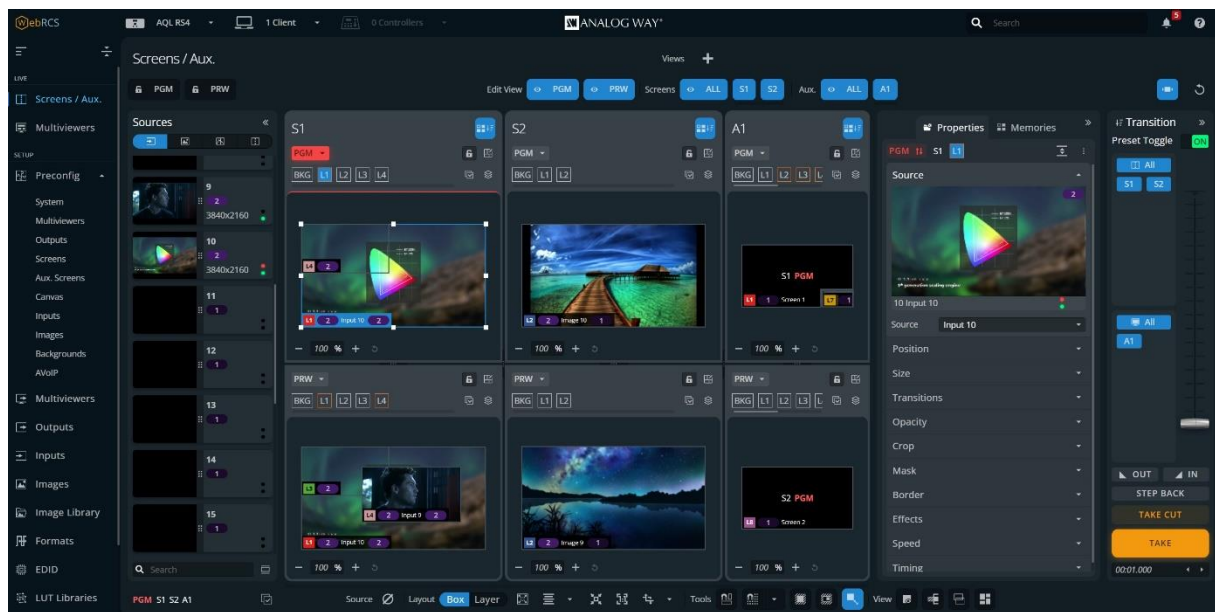
o Processing

- Add the ability to use the Cut&Fill feature directly in the input processing without burning extra layer resources (Cut&Fill at layer level is still available)
- When editing a canvas in grid mode, the max grid size is increased from 8x8 to 16x16
- The output and screen patterns are now displayed in the multiviewers.
- Change the default value of "Allow Cross effect" to No
- When creating a custom format, the Reduced Blanking setting is now enabled by default
- Add a new screen pattern to test 30bits
- Update the BBC's 3D LUTs for SDR/HDR conversions with the latest versions

o System:

- The description of EDIDs is now standardized and homogeneous between LivePremier, Midra 4K and ALTA 4K
- Add a protection to prevent the system update with a firmware incompatible with the hardware configuration
- When exporting a configuration file from a slot, the label is now included in the filename for a more explicit name
- Implement a DHCP retry each minute when in fallback mode

o Web RCS



- New interface with better accessibility and more consistent design
- Source/ Memories/ Transition panels are now collapsible in the Live pages
- Add the ability to zoom in/out the viewer of a screen/aux. screen/multiviewer in the Live pages of the Web RCS
- Add the possibility to filter the sources based on their name in the Live pages
- Support of the new 6RU LivePremier units
- Support of the Link feature

Bug fixes:

- o Audio nows work properly with NDI sources
- o Fix layer position issues with canvas size superior to 32000*32000 px
- o For GPOs, it is now possible to unselect an input from a screen
- o Global Copy / paste now works for timing properties
- o "Remove from all BKG Sets" in WebRCS now removes BKG in disabled screens
- o The multiviewers' dynamic range is now managed properly and forced to SDR

Known issues:

- o When the Dante network clock is set to 96kHz, audio is not working anymore (both embedded and Dante audio)
- o Linked system doesn't boot if frame library size is too large -> Image Library > 1.2Go
- o At startup, layer content is not properly scaled when using multiple Aux
- o A shared input or image is not useable in background sets with the outputs of the unit it comes from
- o Timers are not perfectly synchronized if displayed on 2 outputs of the same screen but from 2 different Aquilon

Products	Aquilon RS alpha, Aquilon RS1, Aquilon RS2, Aquilon RS3, Aquilon RS4, Aquilon C, Aquilon C+
Date	January 26 th , 2024
Version	3.1.96

The version (s) indicated here above has (have) been tested and validated by the QA Department.

Technical Notes:

Warnings:

DANTE FEATURE:

- To take advantages of functionalities provided by LivePremier:
 - Dante firmware update during LivePremier updater (version 2.2.79 and above)
 - Address MAC reading

A pre-requisite is to install AW Dante Firmware v3.7.0.16 (embedding Dante Firmware 4.2.0.28, available on Analog Way's website) using the Dante Firmware Update Manager tool before updating the LivePremier firmware.

DRAWBACKS:

- When updating to version 2.2.79 and above from a 1.x version, the following drawbacks may be encountered:
 - Any output configured with a capacity 2 but delivering a dual-resolution format (up to 2560x1600 @ 60hz) will have its capacity automatically changed to 1.
 - Due to the new implementation of Aux. Screens with several layers, the Screens Memories for these Auxiliary Screens must be checked after the update as the size of the previously existing layer is automatically forced to default 1920x1080.

New features and Improvements:

- o None

Bug fixes:

- o The HDMI interoperability is now improved with some Crestron modules.

Evolution

- o Support of new hardware revision.

Known issues:

- o When the Dante network clock is set to 96kHz, audio is not working anymore (both embedded and Dante audio)

Products	Aquilon RS alpha, Aquilon RS1, Aquilon RS2, Aquilon RS3, Aquilon RS4, Aquilon C, Aquilon C+
Date	June 22 nd , 2023
Version	3.1.89

The version (s) indicated here above has (have) been tested and validated by the QA Department.

.....

Technical Notes:

Warnings:

DANTE FEATURE:

- To take advantages of functionalities provided by LivePremier:
 - Dante firmware update during LivePremier updaters (version 2.2.79 and above)
 - Address MAC reading

A pre-requisite is to install AW Dante Firmware v3.7.0.16 (embedding Dante Firmware 4.2.0.28, available on Analog Way's website) using the Dante Firmware Update Manager tool before updating the LivePremier firmware.

DRAWBACKS:

- When updating to version 2.2.79 and above from a 1.x version, the following drawbacks may be encountered:
 - Any output configured with a capacity 2 but delivering a dual-resolution format (up to 2560x1600 @ 60hz) will have its capacity automatically changed to 1.
 - Due to the new implementation of Aux. Screens with several layers, the Screens Memories for these Auxiliary Screens must be checked after the update as the size of the previously existing layer is automatically forced to default 1920x1080.

Evolution

- o None

New features and Improvements:

- o None

Bug fixes:

- o Images with a width larger than 4096 pixels are now displayed properly
- o Format 1080i @59.94Hz now works on the third output plug when the type of the output card is SDI
- o An output with 1080i format and rotation (90 or 270) now displays properly the Background layer
- o The DHCP setting for the NTP (Network Time Protocol) feature is not lost anymore after rebooting
- o When a third Party controller is used to mute an audio channel which has its source set to NONE, the control connection with the device is not lost anymore
- o The displayed Program is now always consistent with what it should be
- o After a MacBook (M1/M2) goes to standby mode and then wakes up, a DisplayPort input now detects it properly
- o It is now possible to import an LUT containing tab characters
- o Memory leak causing a long term crash is now fixed

Known issues:

- o When the Dante network clock is set to 96kHz, audio is not working anymore (both embedded and Dante audio)

Products	Aquilon RS alpha, Aquilon RS1, Aquilon RS2, Aquilon RS3, Aquilon RS4, Aquilon C, Aquilon C+
Date	April 12 th , 2023
Version	3.1.78

The version (s) indicated here above has (have) been tested and validated by the QA Department.

.....

Technical Notes:

Warnings:

DANTE FEATURE:

- To take advantages of functionalities provided by LivePremier:
 - Dante firmware update during LivePremier updater (version 2.2.79 and above)
 - Address MAC reading

A pre-requisite is to install AW Dante Firmware v3.7.0.16 (embedding Dante Firmware 4.2.0.28, available on Analog Way's website) using the Dante Firmware Update Manager tool before updating the LivePremier firmware.

DRAWBACKS:

- When updating to version 2.2.79 and above from a 1.x version, the following drawbacks may be encountered:
 - Any output configured with a capacity 2 but delivering a dual-resolution format (up to 2560x1600 @ 60hz) will have its capacity automatically changed to 1.
 - Due to the new implementation of Aux. Screens with several layers, the Screens Memories for these Auxiliary Screens must be checked after the update as the size of the previously existing layer is automatically forced to default 1920x1080.

Evolution

o EDIDs:

- For EDIDs with 1920x1080 formats, all other larger formats, especially in the CEA extension, are removed to ensure that the source uses the right format.

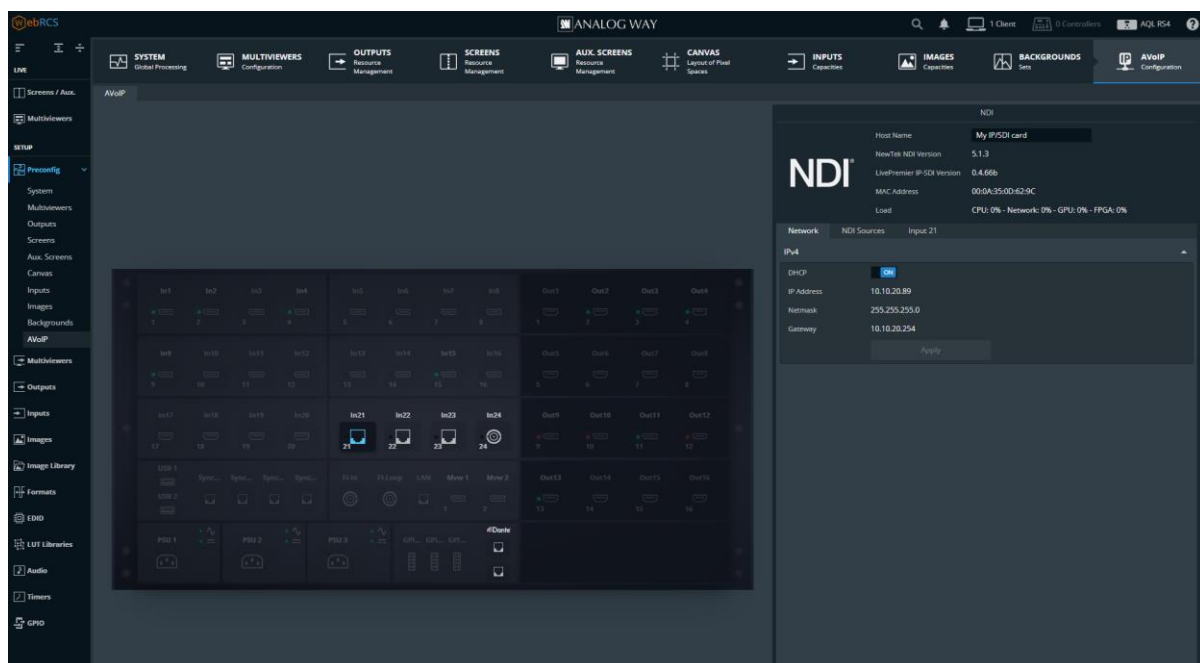
o Web RCS

- New “AVoIP” step in the SETUP>Preconfig
 - This new step allows to configure and/or get the status of all inputs and outputs using IP (Internet Protocol). Simply clicking on the selected connector, you can access its settings and statuses. Concerned technologies are:
 - NDI
 - SDVoE
 - Dante
 - As a consequence, the SETUP>Audio>Dante page is removed from the menu tree and the SETUP>Audio page gives direct access to the audio routing.

New features and Improvements:

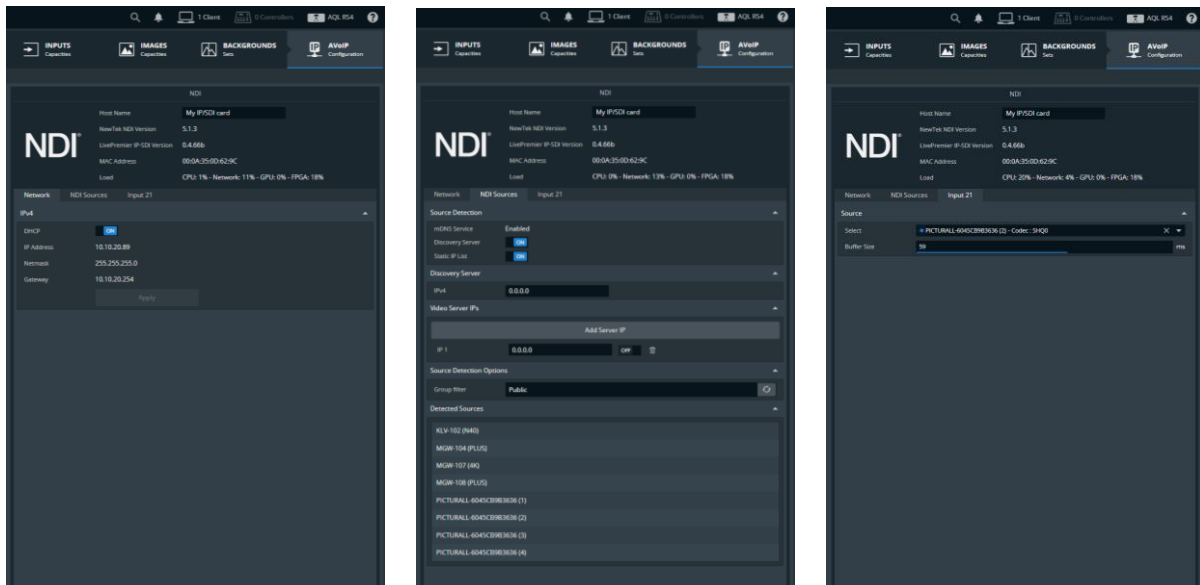
o Hardware

- Implementation of a retry procedure in case a card doesn't boot properly.
- Support of the IP/SDI card (ref.: ACC-AQL-IN-IP-SDI):
This hybrid card can manage up to 4 inputs sources to be chosen among NDI input streams and 4 12G-SDI inputs.



To manage the NDI sources, three possibilities:

- Use the mDNS service
- Enter the IP address of a discovery server
- Enter the IP address of each source



For further information about the configuration of the IP/SDI input card, please read the user manual.

For further information about its decoding performances, please read its datasheet.

- Support of new Dante Brooklyn 3
- o **DPH104**
 - Support of new formats for DPH104:
 - 1920x1080@24Hz
 - 1920x1200@24hz
 - 1920x1200@25hz
 - 1920x1200@30hz

Bug fixes:

- o HDCP management is globally more stable and reliable.
- o Using an firmware outdated or out-of-order card doesn't prevent the unit from booting anymore.
- o When copying the Program of a screen to its Preview, the Layer Mask settings are now copied properly.
- o Timers are not randomly teared anymore when displayed on the Program.
- o When keying a frozen input, the Hue value is not modified anymore while unfreezing.

Known issues:

- o Images whose width are larger than 4096 pixels are not displayed properly.

Products	Aquilon RS alpha, Aquilon RS1, Aquilon RS2, Aquilon RS3, Aquilon RS4, Aquilon C, Aquilon C+
Date	November 29 th , 2022
Version	3.0.255

The version (s) indicated here above has (have) been tested and validated by the QA Department.

Technical Notes:

Warnings:

DANTE FEATURE:

- To take advantages of functionalities provided by LivePremier:
 - Dante firmware update during LivePremier updater (version 2.2.79 and above)
 - Address MAC reading

A pre-requisite is to install AW Dante Firmware v3.7.0.16 (embedding Dante Firmware 4.2.0.28, available on Analog Way's website) using the Dante Firmware Update Manager tool before updating the LivePremier firmware.

DRAWBACKS:

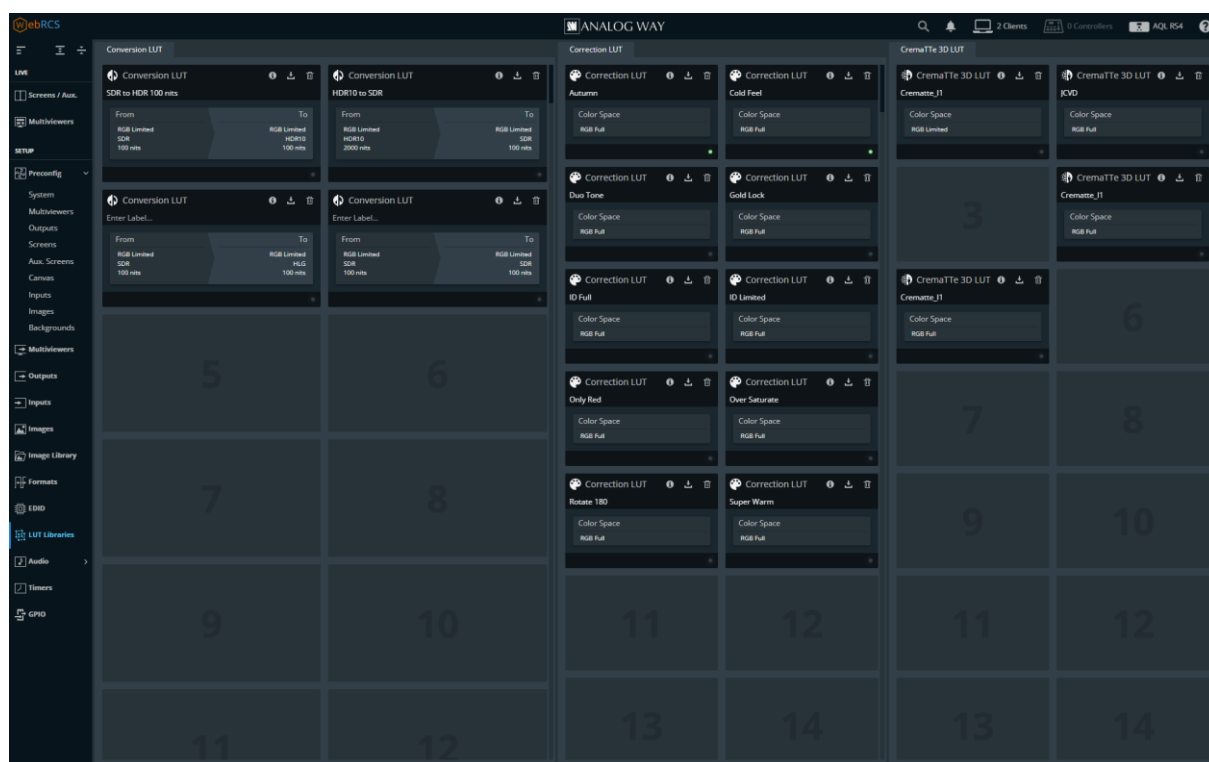
- When updating to version 2.2.79 and above from a 1.x version, the following drawbacks may be encountered:
 - Any output configured with a capacity 2 but delivering a dual-resolution format (up to 2560x1600 @ 60hz) will have its capacity automatically changed to 1.
 - Due to the new implementation of Aux. Screens with several layers, the Screens Memories for these Auxiliary Screens must be checked after the update as the size of the previously existing layer is automatically forced to default 1920x1080.

Evolution

- o Minimum canvas size in custom mode is now 1x1
- o Support of new hardware component references
- o In the Web RCS SETUP>Preconfig, the 3 tabs of the Screens/Aux.Screens page were suppressed and the page was split in 3 steps: Outputs, Screens and Aux. Screens.

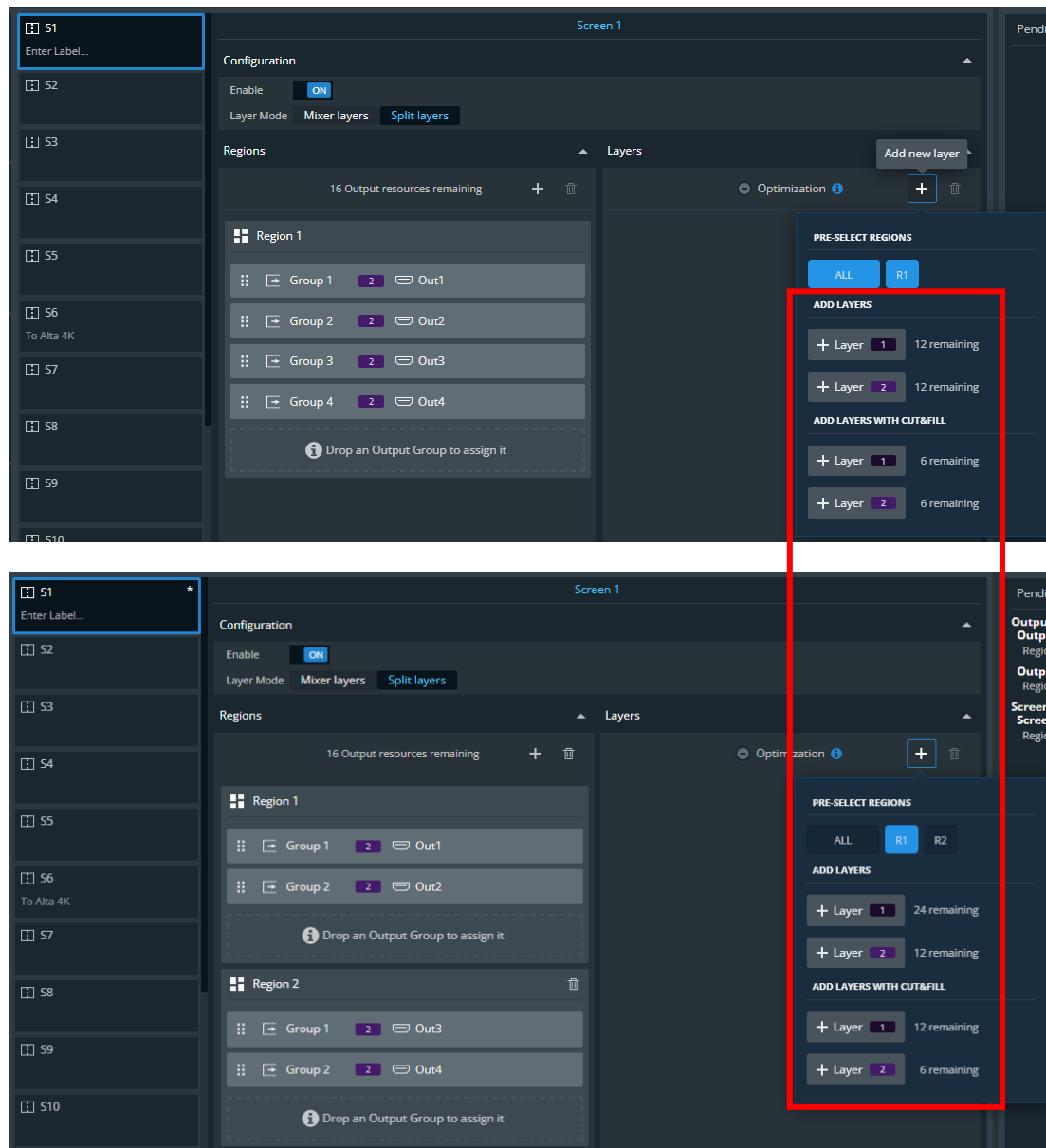
New features and Improvements:

- o **Processing**
 - New Processing Architecture based on Look-up Tables (LUT). The Device contains predefined-LUTs for all automatic settings. It is also possible to import and select custom LUTs in the dedicated libraries.
- There are three types of LUTs:
- **Conversion LUTs:** to be used for color space and dynamic range conversions (SDR↔HDR). The Conversion LUTs can be set manually in the Group Signal tab of input settings and the Signal tab of output settings.
 - **Correction LUTs:** to be used to correct the colors of an input or an output. For outputs, they are typically useful for color calibration. The Correction LUTs can be set manually in the Group Adjustments tab of input settings and the Adjustments tab of output settings.
 - **CremaTTe 3D LUTs:** they are used for keying inputs. They can be generated using the AW CremaTTe 3D tool (available on Analog Way's website). The CremaTTe 3D LUTs can be set manually in the Group Keying tab of input settings



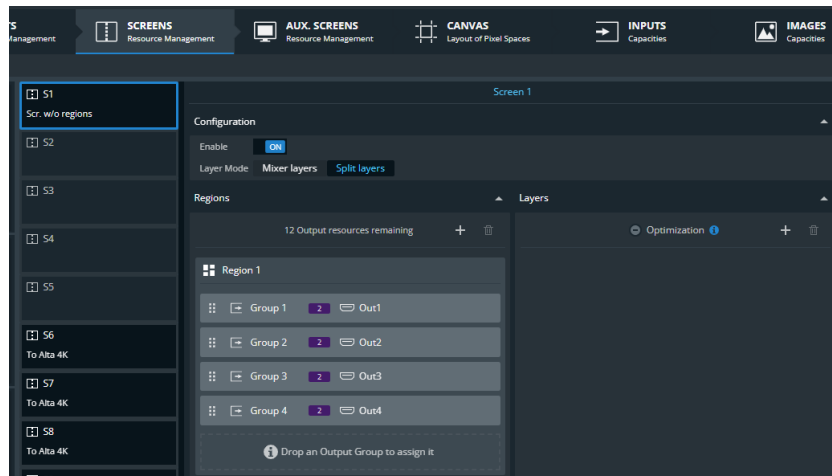
o Screen & Layer Management

- It is now possible to **optimize the layer resources dramatically**. This can be achieved by creating regions in a screen (one or several outputs):
 - A region may not contain any layers, just the background.
 - Layers can be assigned to one or several regions
 - Layers won't be displayed outside the regions they are assigned to. They are called **Captive PIPs**
 - This can be used for applications that don't need having layers spreading all over the screen such as Command & Control, Sportsbook...

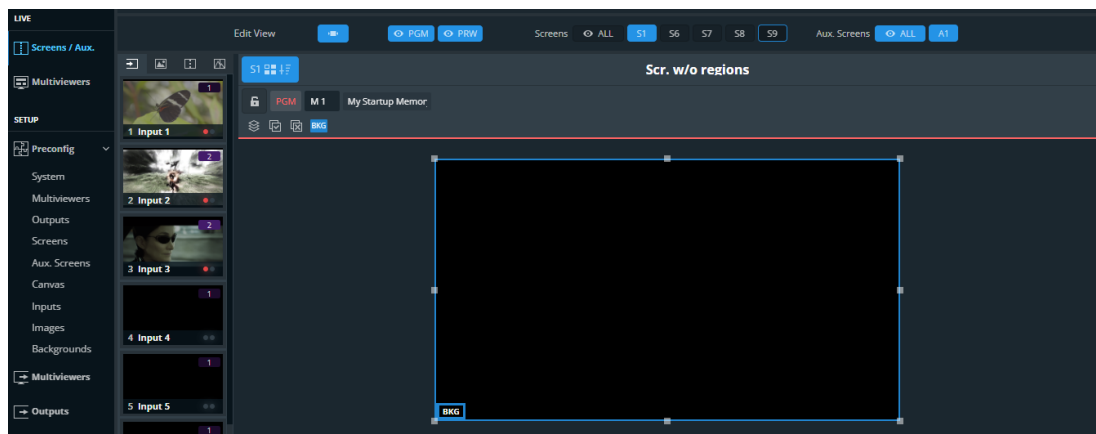


Example of an RS4 with a screen of four capacity 2 outputs with one region (Top) and two regions (bottom)

- It is now possible to create a **screen without any layers**. This can be used to create a multi-output screen containing a background (live or image) only.

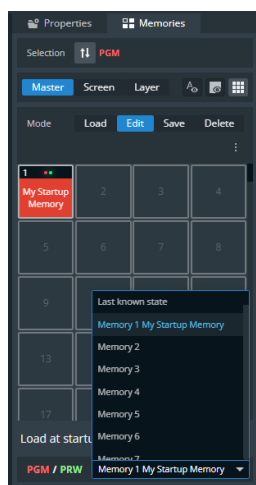


Example of a Screen without layers and background only (Preconfig page)



Example of a Screen without layers and background only (Live page)

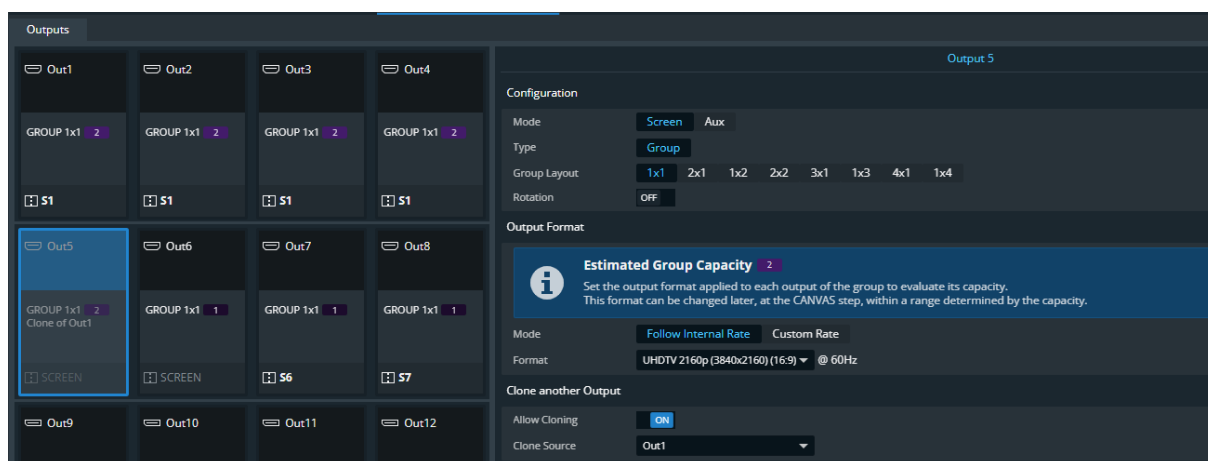
- It is now possible to select what is displayed on the Program and Preview at startup:
 - Blank Program and Preview: nothing is displayed
 - Master Memory: the selected Master Memory is loaded
 - Last known state of Program and Preview before shutdown.



Example of a master Memory to be loaded on Program and Preview at startup

o Outputs

- Add the possibility to **clone an output**. Any output of a Screen can be duplicated to another output with the same capacity. If it the source output hasn't got the same format and/or rates, then the clone output is scaled and/or frame-rate converted. This is useful to create redundancy for LED wall processors' backup inputs without external splitters.

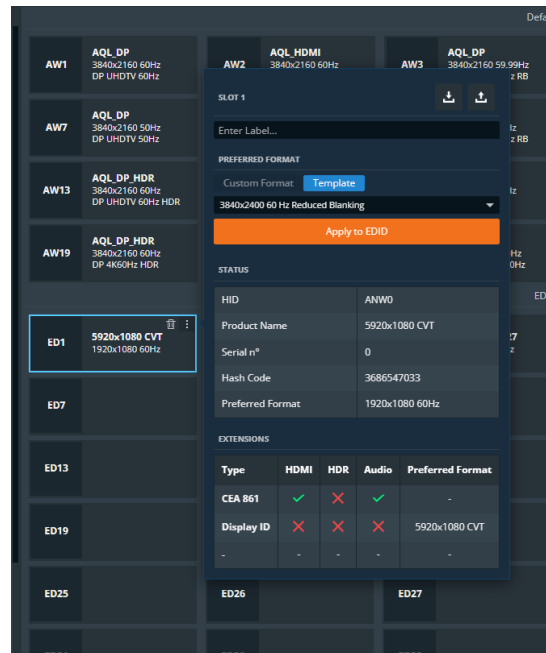


Example: Output 5 cloning Output 1

- Add the possibility to **freeze an output**. Each output can now be frozen independently from the others.

o EDID

- It is now possible to read the preferred formats of an EDID even if they are defined in extensions (CEA-861-G and DisplayID 1.3).



Example of an EDID with a DisplayPort extension containing a preferred format

Bug fixes:

o Processing

- There are no more HDCP 2.x problems with specific displays.
- Layer crop can now fully crop the content.
- Layer assigned with an input without signal are now systematically displayed in black.
- There are no more Background mismatches between Program and Preview when working with Backgrounds with a transition time set at 0s.
- Output Color Space control is now effective when the Pixel Encoding is set to Auto.
- Multiviewer outputs now systematically start properly.
- Multiviewer outputs don't lag anymore after enabling/disabling a test pattern.
- During shutdown, there is no more audio noise on a multiviewer output with audio.

o Preconfig Pages

- In the SETUP>Preconfig>Screens/Aux. Screens page, the label of 4 grouped outputs is now displayed properly.
- In the SETUP>Preconfig>Screens/Aux. Screens page, an "Invalid Configuration" error is now raised when some layers are assigned to a screen without any outputs.
- Grouped outputs are not erroneously affected to a screen after reboot.
- Rotation of output 4 doesn't disable black level of output 8 anymore.
- Black level correction is now properly applied even if the Blending Curve is disabled.

o Web RCS Live Page

- The size properties of a layer are not involuntarily reset anymore to their current values while editing them.

- In the Live> Screens page, locking a screen shouldn't make the layers' labels and outlines disappear.
- In the layer properties tab, the Mask menu was removed for Backgrounds of Auxiliary Screens.
- o Control Boxes
 - SB124T / SB124T-2 / SB124T-3: after loading a non-self-contained Master Memory, pressing Take also transitions the Auxiliary Screens.
 - SB124T-3: when loading a self-contained master memory, the screens are now armed properly.
- o Timers
 - Timers don't remain stuck at 00:00:00 anymore.
- o Images
 - All JPEG/JPG format files are now detected properly in the library import window.
 - Captured images can be downloaded to PC even after a large number of captures/downloads.
 - Input capture systematically works whatever:
 - The number of outputs in the system,
 - The number of inputs in the system,
 - The input format.
- o Formats
 - Custom Input Format are now always properly detected in the Preconfig > Inputs page when using the auto-detection tool.
 - Capability of Custom formats in the Library are now computed properly.
 - When a Custom Format memory is used by an output, modifying the memory now also updates the output format.
- o Patterns
 - There are no more issues with input patterns when using 1080i format.
 - There are no more flashes when switching the input pattern type.
- o Miscellaneous
 - Analog Way SFP modules are now detected properly.
 - When unplugging a DHCP-configured device from the network and connecting it directly to a laptop, the IP address status is now correct.
 - Temperature management is now able to handle negative temperatures.
 - The device doesn't crash anymore when the front panel coder is used while booting.

Known issues:

- o None.

Products	Aquilon RS alpha, Aquilon RS1, Aquilon RS2, Aquilon RS3, Aquilon RS4, Aquilon C, Aquilon C+
Date	July 20 th , 2022
Version	2.5.19

The version (s) indicated here above has (have) been tested and validated by the QA Department.

Technical Notes:

Warnings:

DANTE FEATURE:

- To take advantages of functionalities provided by LivePremier:
 - Dante firmware update during LivePremier updater (version 2.2.79 and above)
 - Address MAC reading

A pre-requisite is to install AW Dante Firmware v3.7.0.16 (embedding Dante Firmware 4.2.0.28, available on Analog Way's website) using the Dante Firmware Update Manager tool before updating the LivePremier firmware.

DRAWBACKS:

- When updating to version 2.2.79 and above from a 1.x version, the following drawbacks may be encountered:
 - Any output configured with a capacity 2 but delivering a dual-resolution format (up to 2560x1600 @ 60hz) will have its capacity automatically changed to 1.
 - Due to the new implementation of Aux. Screens with several layers, the Screens Memories for these Auxiliary Screens must be checked after the update as the size of the previously existing layer is automatically forced to default 1920x1080.

New features and Improvements:

- o None

Bug fixes:

- o There are no more display problems of a screen used as a source in a split layer.

Evolution

- o None

Known issues:

- o None

Products	Aquilon RS alpha, Aquilon RS1, Aquilon RS2, Aquilon RS3, Aquilon RS4, Aquilon C, Aquilon C+
Date	May 3r ^d , 2022
Version	2.5.16

The version (s) indicated here above has (have) been tested and validated by the QA Department.

Technical Notes:

Warnings:

DANTE FEATURE:

- To take advantages of functionalities provided by LivePremier:
 - Dante firmware update during LivePremier updater (version 2.2.79 and above)
 - Address MAC reading

A pre-requisite is to install AW Dante Firmware v3.7.0.16 (embedding Dante Firmware 4.2.0.28, available on Analog Way's website) using the Dante Firmware Update Manager tool before updating the LivePremier firmware.

DRAWBACKS:

- When updating to version 2.2.79 and above from a 1.x version, the following drawbacks may be encountered:
 - Any output configured with a capacity 2 but delivering a dual-resolution format (up to 2560x1600 @ 60hz) will have its capacity automatically changed to 1.
 - Due to the new implementation of Aux. Screens with several layers, the Screens Memories for these Auxiliary Screens must be checked after the update as the size of the previously existing layer is automatically forced to default 1920x1080.

New features and Improvements:

- o None

Bug fixes:

- o None

Evolution

- o Support of new hardware component references

Known issues:

- o None

Products	Aquilon RS alpha, Aquilon RS1, Aquilon RS2, Aquilon RS3, Aquilon RS4, Aquilon C, Aquilon C+
Date	April 22 nd , 2022
Version	2.5.15

The version (s) indicated here above has (have) been tested and validated by the QA Department.

Technical Notes:

Warnings:

DANTE FEATURE:

- To take advantages of functionalities provided by LivePremier:
 - Dante firmware update during LivePremier updater (version 2.2.79 and above)
 - Address MAC reading

A pre-requisite is to install AW Dante Firmware v3.7.0.16 (embedding Dante Firmware 4.2.0.28, available on Analog Way's website) using the Dante Firmware Update Manager tool before updating the LivePremier firmware.

DRAWBACKS:

- When updating to version 2.2.79 and above from a 1.x version, the following drawbacks may be encountered:
 - Any output configured with a capacity 2 but delivering a dual-resolution format (up to 2560x1600 @ 60hz) will have its capacity automatically changed to 1.
 - Due to the new implementation of Aux. Screens with several layers, the Screens Memories for these Auxiliary Screens must be checked after the update as the size of the previously existing layer is automatically forced to default 1920x1080.

New features and Improvements:

- o None

Bug fixes:

- o On SB124T-2, correct a regression due to SB124T-3 fix in version 2.5.14

Evolution

- o None

Known issues:

- o None

Products	Aquilon RS alpha, Aquilon RS1, Aquilon RS2, Aquilon RS3, Aquilon RS4, Aquilon C, Aquilon C+
Date	April 19 th , 2022
Version	2.5.14

The version (s) indicated here above has (have) been tested and validated by the QA Department.

Technical Notes:

Warnings:

DANTE FEATURE:

- To take advantages of functionalities provided by LivePremier:
 - Dante firmware update during LivePremier updater (version 2.2.79 and above)
 - Address MAC reading

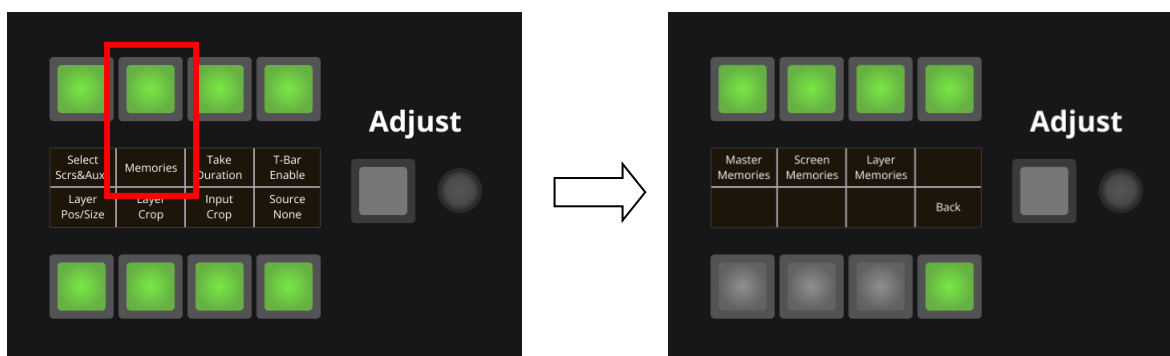
A pre-requisite is to install AW Dante Firmware v3.7.0.16 (embedding Dante Firmware 4.2.0.28, available on Analog Way's website) using the Dante Firmware Update Manager tool before updating the LivePremier firmware.

DRAWBACKS:

- When updating to version 2.2.79 and above from a 1.x version, the following drawbacks may be encountered:
 - Any output configured with a capacity 2 but delivering a dual-resolution format (up to 2560x1600 @ 60hz) will have its capacity automatically changed to 1.
 - Due to the new implementation of Aux. Screens with several layers, the Screens Memories for these Auxiliary Screens must be checked after the update as the size of the previously existing layer is automatically forced to default 1920x1080.

New features and Improvements:o **RC400T**

- When a screen PGM or PRW is locked on the WebRCS and the RC400T is synchronized with WebRCS, the lock is also effective with RC400T for a safer behavior. It is not possible anymore for this screen:
 - to change the input assignment of a layer
 - to load a Screen memory
 - to overwrite its content while loading a Master Memory
- Memories can now be saved and deleted in the user keys area of RC400T:
 - Master Memories
 - Screen Memories
 - Layer Memories

Bug fixes:

- o Forcing HDCP output detection mode now systematically works
- o On SB124T-3, when pressing twice a Master Memory, the key doesn't blink inconsistently anymore
- o On SB124T-3, when loading a Master Memory, the Screen transition filter is now updated accordingly with the memory's filter
- o Input EDIDs are now restored properly when a Configuration file (including EDID Input Data) is loaded.

Evolution

- o None

Known issues:

- o None

Products	Aquilon RS alpha, Aquilon RS1, Aquilon RS2, Aquilon RS3, Aquilon RS4, Aquilon C, Aquilon C+
Date	February 14 th , 2022
Version	2.4.27

The version (s) indicated here above has (have) been tested and validated by the QA Department.

Technical Notes:

Warnings:

DANTE FEATURE:

- To take advantages of functionalities provided by LivePremier:
 - Dante firmware update during LivePremier updater (version 2.2.79 and above)
 - Address MAC reading

A pre-requisite is to install AW Dante Firmware v3.7.0.16 (embedding Dante Firmware 4.2.0.28, available on Analog Way's website) using the Dante Firmware Update Manager tool before updating the LivePremier firmware.

DRAWBACKS:

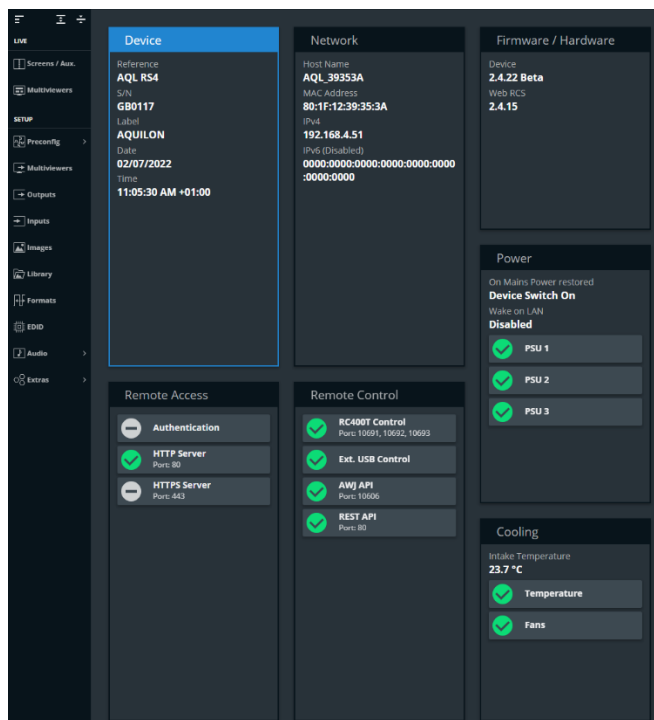
- When updating to version 2.2.79 and above from a 1.x version, the following drawbacks may be encountered:
 - Any output configured with a capacity 2 but delivering a dual-resolution format (up to 2560x1600 @ 60hz) will have its capacity automatically changed to 1.
 - Due to the new implementation of Aux. Screens with several layers, the Screens Memories for these Auxiliary Screens must be checked after the update as the size of the previously existing layer is automatically forced to default 1920x1080.

New features and Improvements:

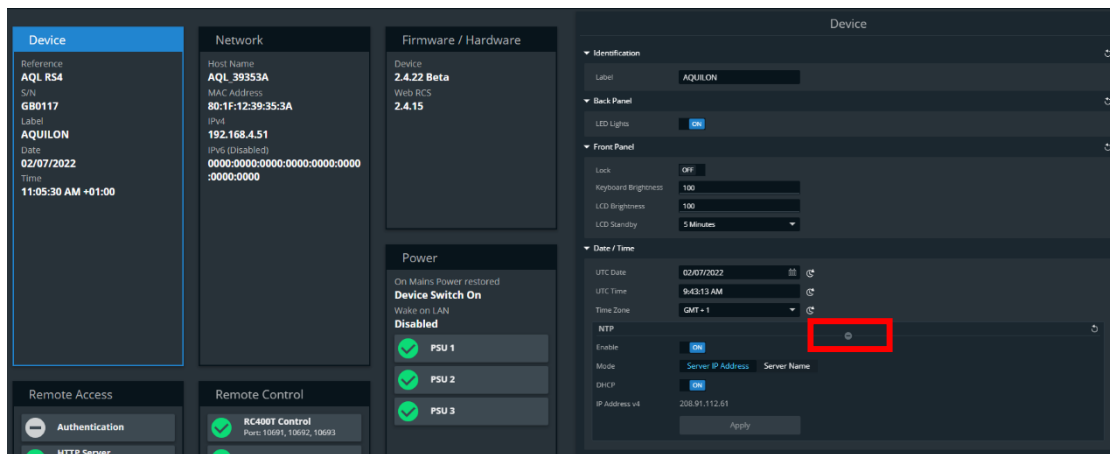
o Web RCS:

- Dashboard

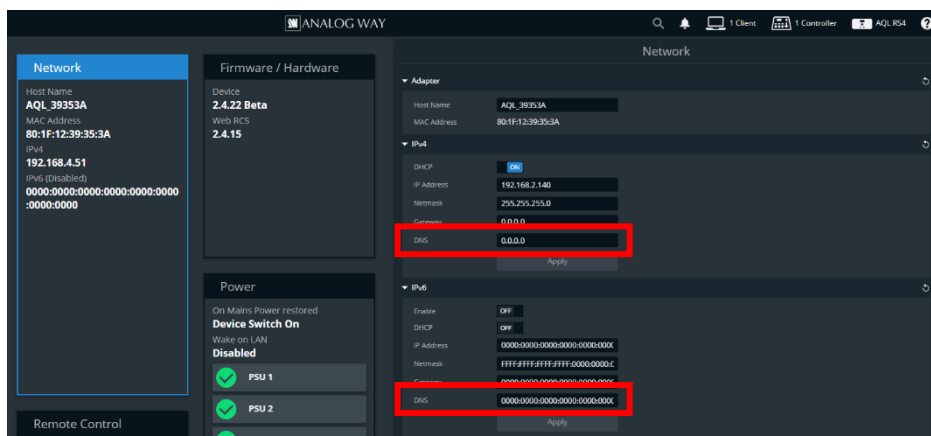
- New layout of the Dashboard page



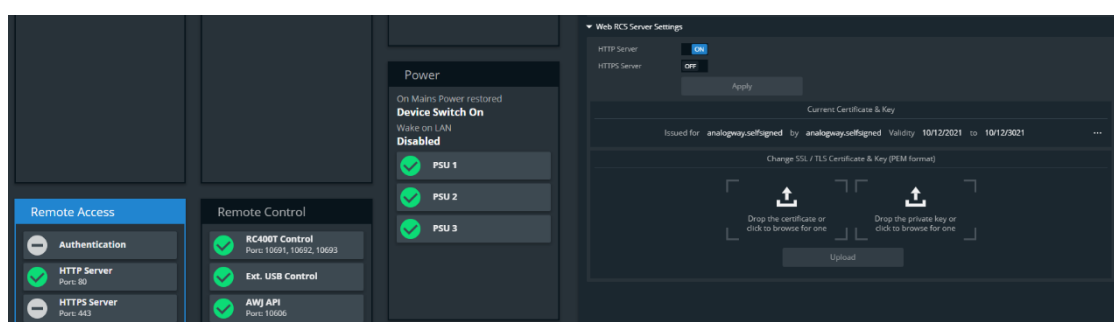
- New connection status for the NTP server



- Add the possibility to set the DNS address in the Web RCS

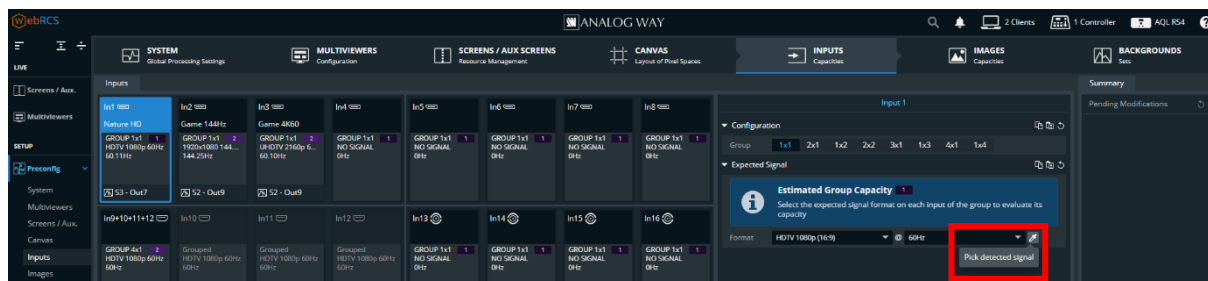


- New interface of the HTTP/HTTPS settings



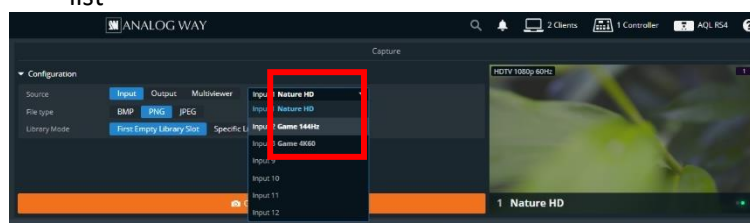
- Preconfiguration

- Add an "Auto-detect" function to determine the input capacity

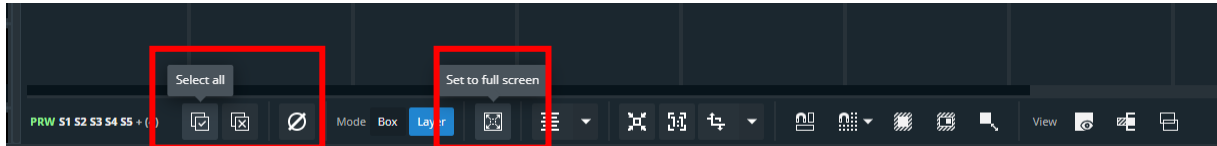


- Image Library

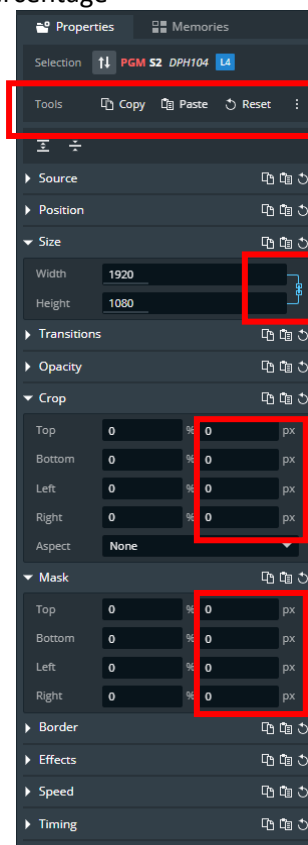
- For the Capture function, the source label is now displayed in the drop-down list



- **Audio**
 - In the DANTE page, the DANTE channels are now numbered from 1 to 64
- **Live pages**
 - **Modification of the bottom tool bar**
 - A shortcut button is now available for setting a layer full screen in one step instead of centering it and then setting it at full screen size.
 - Add "Select All", "Unselect All" and "Clear" buttons

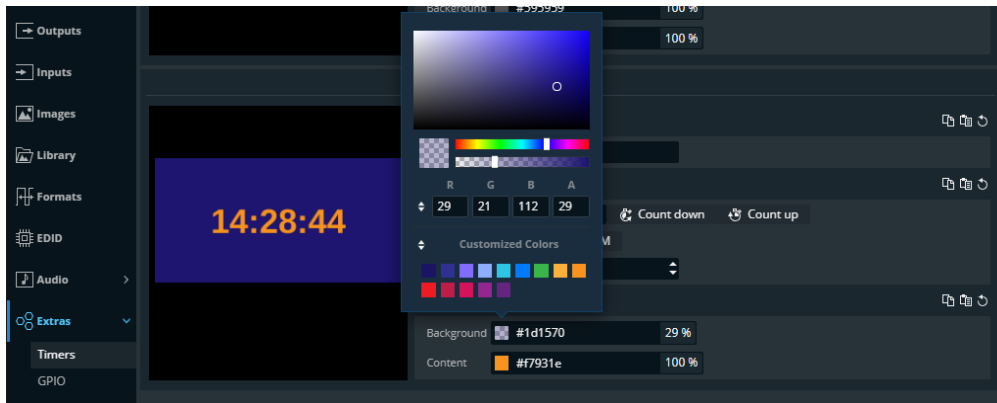


- **Improvement of the layer property management**
 - New global Copy/Paste/Reset tools for layer properties.
 - New option to lock the aspect ratio of a layer while resizing it in the properties panel (independent from the one in the bottom tool bar)
 - Layer cropping and masking now achievable either in pixels (new) or in percentage



- **Timers**

- It is now possible to change the background and text colors of a timer. This feature includes the support of an alpha channel (transparency).



- o **RC400T**

- The "Select/Unselect All Screens/Aux" function is now available in the User Keys area
 - The input crop using the joystick and menus is now available



Bug fixes:

- o Projector 1200P format is not defined as invalid anymore on SDI outputs.
- o When Dante rate is configured at 44.1kHz, there is no noise anymore on SDI outputs.
- o The input format 1920x1080 @144Hz is now valid in Capacity 1.
- o When a Still Image and a 50/60Hz format have the same resolution, they now have the same capacity.
- o Capacity of Custom formats with a width greater than 4096 pixels is now computed properly.

Evolution

- o Support of new hardware revisions.

Known issues:

- o None

Products	Aquilon RS alpha, Aquilon RS1, Aquilon RS2, Aquilon RS3, Aquilon RS4, Aquilon C, Aquilon C+
Date	January 25 th , 2022
Version	2.3.117

The version (s) indicated here above has (have) been tested and validated by the QA Department.

Technical Notes:

Warnings:

DANTE FEATURE:

- To take advantages of functionalities provided by LivePremier:
 - Dante firmware update during LivePremier updater (version 2.2.79 and above)
 - Address MAC reading

A pre-requisite is to install AW Dante Firmware v3.7.0.16 (embedding Dante Firmware 4.2.0.28, available on Analog Way's website) using the Dante Firmware Update Manager tool before updating the LivePremier firmware.

DRAWBACKS:

- When updating to version 2.2.79 and above from a 1.x version, the following drawbacks may be encountered:
 - Any output configured with a capacity 2 but delivering a dual-resolution format (up to 2560x1600 @ 60hz) will have its capacity automatically changed to 1.
 - Due to the new implementation of Aux. Screens with several layers, the Screens Memories for these Auxiliary Screens must be checked after the update as the size of the previously existing layer is automatically forced to default 1920x1080.

New features and Improvements:

- o None

Bug fixes:

- o **Processing**
 - SDI 1200p input format (which is a non-SMPTE format) is not displayed with large vertical bands anymore.
- o **System**
 - Firmware regression might cause very rare system shutdown.

Known issues:

- o None

Products	Aquilon RS alpha, Aquilon RS1, Aquilon RS2, Aquilon RS3, Aquilon RS4, Aquilon C, Aquilon C+
Date	December 16 th , 2021
Version	2.3.113

The version (s) indicated here above has (have) been tested and validated by the QA Department.

Technical Notes:

Warnings:

DANTE FEATURE:

- To take advantages of functionalities provided by LivePremier:
 - Dante firmware update during LivePremier updater (version 2.2.79 and above)
 - Address MAC reading

A pre-requisite is to install AW Dante Firmware v3.7.0.16 (embedding Dante Firmware 4.2.0.28, available on Analog Way's website) using the Dante Firmware Update Manager tool before updating the LivePremier firmware.

DRAWBACKS:

- When updating to version 2.2.79 and above from a 1.x version, the following drawbacks may be encountered:
 - Any output configured with a capacity 2 but delivering a dual-resolution format (up to 2560x1600 @ 60hz) will have its capacity automatically changed to 1.
 - Due to the new implementation of Aux. Screens with several layers, the Screens Memories for these Auxiliary Screens must be checked after the update as the size of the previously existing layer is automatically forced to default 1920x1080.

New features and Improvements:o **Layer management**

- In Split Layers mode, if a layer remains unchanged between Program and Preview and the Allow Cross Effect setting is disabled, the layer doesn't disappear anymore during transitions.

Bug fixes:o **Processing**

- Enabling blending curves for two overlapping outputs doesn't create artefacts anymore.
- HDCP 2.2 negotiation now works with all displays.
- The polarity of output synch now matches video standard.
- The position of a layer is properly saved in self-contained memories even if it is greater than 32768.
- Images are now displayed properly in backgrounds
- Auxiliary Screens are now displayed properly when input #1 is an SDI/SFP plug set as 1080i during Preconfiguration and has no input signal.
- At startup, Auxiliary Screens without any sources are now displayed properly in the multiviewer.

o **Audio**

- Audio glitches don't appear anymore on SDI outputs when the internal rate is 59,94Hz.

Known issues:

- o SDI 1200p input format (which is a non-SMPTE format) is displayed with large vertical bands.

Products	Aquilon RS alpha, Aquilon RS1, Aquilon RS2, Aquilon RS3, Aquilon RS4, Aquilon C, Aquilon C+
Date	November 8 th , 2021
Version	2.3.103

The version (s) indicated here above has (have) been tested and validated by the QA Department.

Technical Notes:

Warnings:

DANTE FEATURE:

- To take advantages of functionalities provided by LivePremier:
 - Dante firmware update during LivePremier updater (version 2.2.79 and above)
 - Address MAC reading

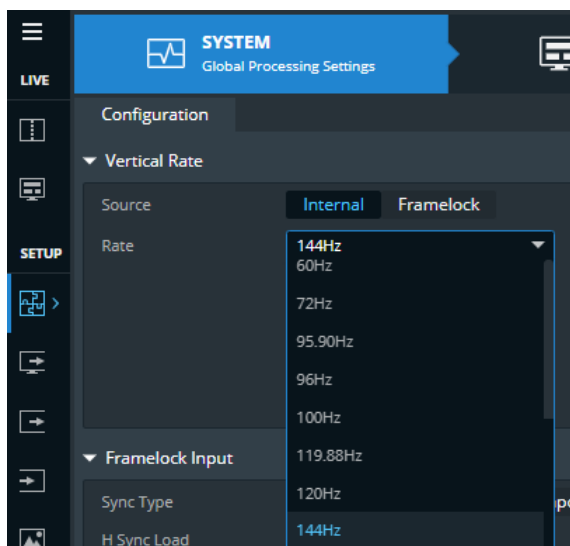
A pre-requisite is to install AW Dante Firmware v3.7.0.16 (embedding Dante Firmware 4.2.0.28, available on Analog Way's website) using the Dante Firmware Update Manager tool before updating the LivePremier firmware.

DRAWBACKS:

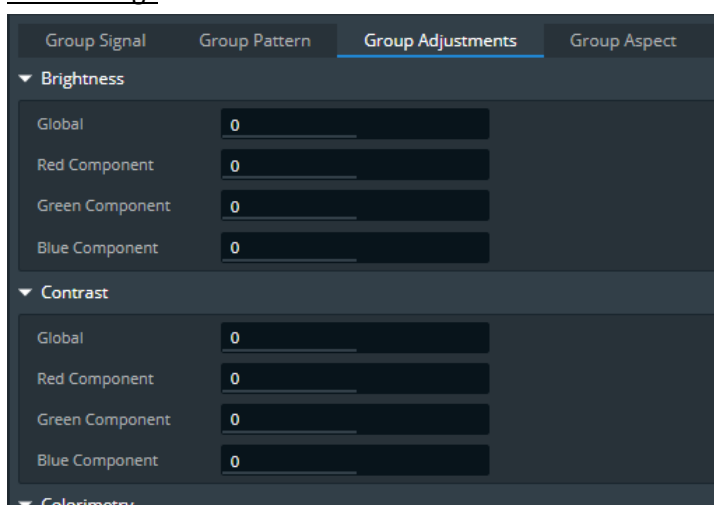
- When updating to version 2.2.79 and above from a 1.x version, the following drawbacks may be encountered:
 - Any output configured with a capacity 2 but delivering a dual-resolution format (up to 2560x1600 @ 60hz) will have its capacity automatically changed to 1.
 - Due to the new implementation of Aux. Screens with several layers, the Screens Memories for these Auxiliary Screens must be checked after the update as the size of the previously existing layer is automatically forced to default 1920x1080.

New features and Improvements:o **Video Processing**

- Add the support of an internal High Frame Rate: The internal rate can now be programmed with new values: 72Hz, 95.9Hz, 96Hz, 100Hz, 199.88Hz, 120Hz and 144Hz. Please note that with High Frame Rates, only HD/Dual formats can be handled for inputs and outputs in the screens.

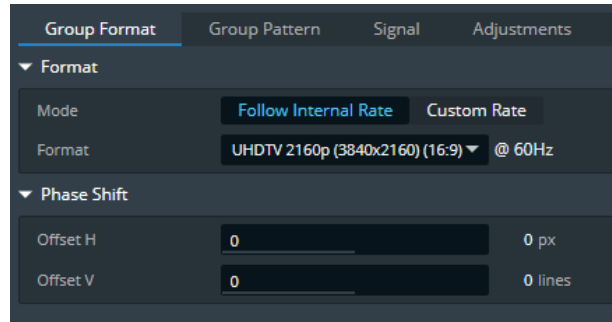


- Add the possibility to adjust the Input/Output brightness and contrast with separate RGB settings.

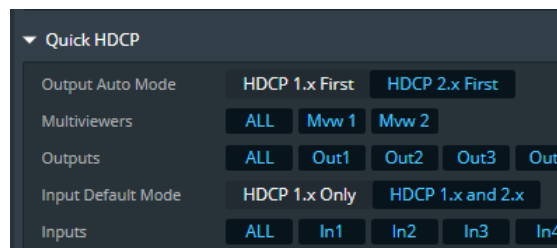


- Add the support of 4:4:4 chroma sub-sampling and 12-bit pixel depth for SDI formats according to SMPTE specifications
- Optimized management for output capacity computation when the Internal rate is 30Hz and a DPH104 configured output delivers 4K30Hz

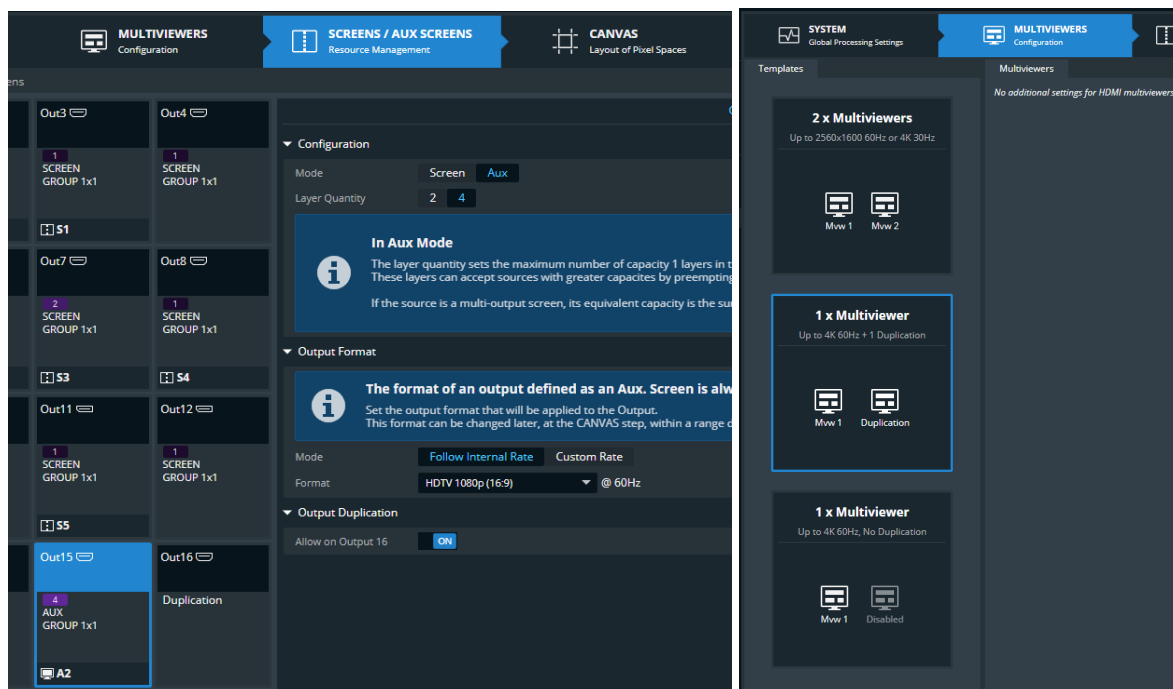
- Add the possibility to adjust the phase shifting of the outputs



- Optimized management of the HDR feature: useless settings are removed from the interface for a better understanding
- Add the possibility to select the HDCP handshake strategy for the Default mode of inputs ("HDCP1.X" only or "HDCP1.X and HDCP2.x") and the Auto mode for outputs (negotiate HDCP1.x or HDCP2.x first)

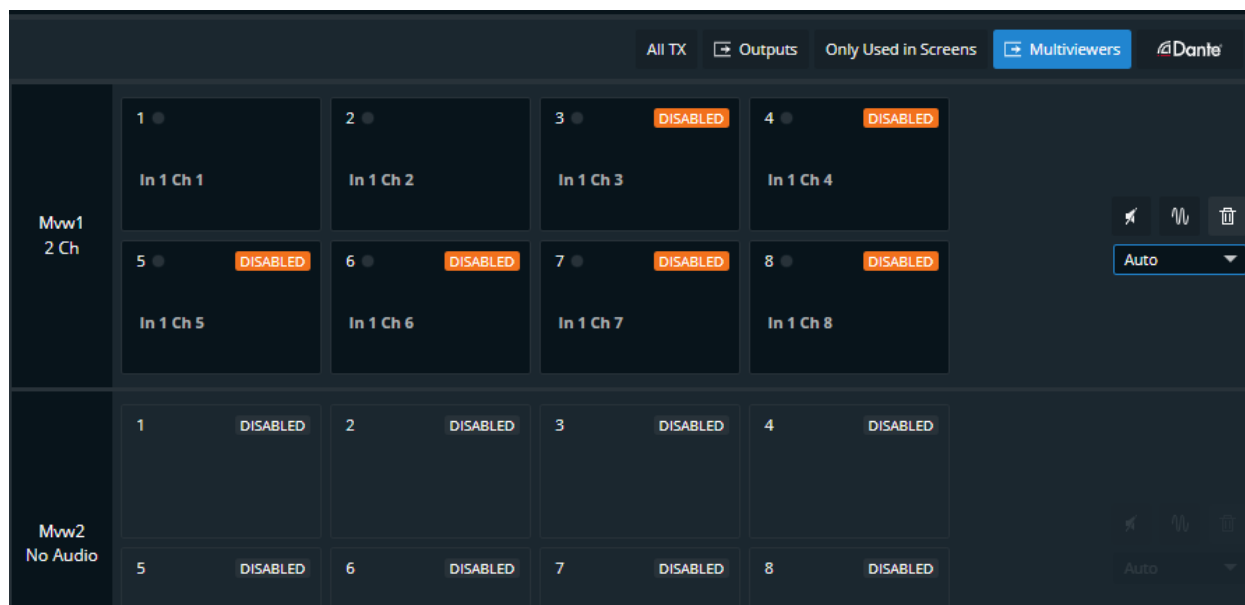


- Duplicate the content of the Leader outputs on the Auxiliary and multiviewer of which the resources have been preempted. Previously, they were disabled with no other possibilities

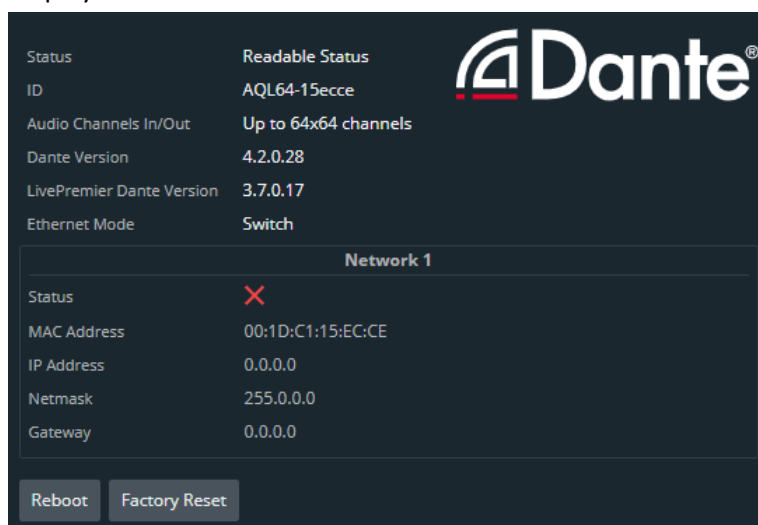


o Audio

- Add the possibility to route audio channels to the multiviewer outputs (up to 8 mono channels)



- Display MAC address of the Dante Card in the Web RCS



- Add the support of Audio in the HTTP REST API

- **System**

- Add the support of HTTPS protocol: for a secured connection to the Aquilon, it is possible to enable an https interface with downloadable certificate and keys

The screenshot displays the Aquilon web interface with two main sections: Network and Remote Control.

Network Section:

- Host Name: **AQL_39353A**
- MAC Address: **80:1F:12:39:35:3A**
- IPv4: **192.168.4.51**
- IPv6 (Disabled): **0000:0000:0000:0000:0000:0000:0000:0000**

Remote Control Section:

- Authentication:**
 - HTTP Server: Port: 80 (Enabled)
 - HTTPS Server: Port: 443 (Disabled)
 - RC400T Control: Port: 10691, 10692, 10693 (Enabled)
 - Ext. USB Control (Enabled)
 - AWJ API: Port: 10606 (Enabled)
 - REST API: Port: 80 (Enabled)
- Basic Authentication:**
 - Enable: **OFF**
 - Change password: New Password, Confirm New Password, Apply
- HTTPS Server:**
 - Enable: **OFF**
 - Current Certificate & Key:

	Subject	Issuer
Common Name	analogway.selfsigned	analogway.selfsigned
Country	France	France
Locality	Antony	Antony
Organization	Analog Way	Analog Way
Validity	10/11/2021 to 10/11/3021	
 - Change SSL / TLS Certificate & Key (PEM format): Certificate, Private Key, Upload new certificate & key
- RC400T Controllers:** Enable: **ON**
- External USB Controllers:** Enable: **ON**
- Application Programming Interfaces:**
 - AWJ Protocol: **ON**
 - REST API: **ON**

- Add timestamp info and user label for Configuration Save/Load slots

The screenshot shows the 'Save' configuration interface with three columns: Current Config, Slot 1, and Slot 2.

Current Config:

Status	Valid
Firmware	2.3.79b

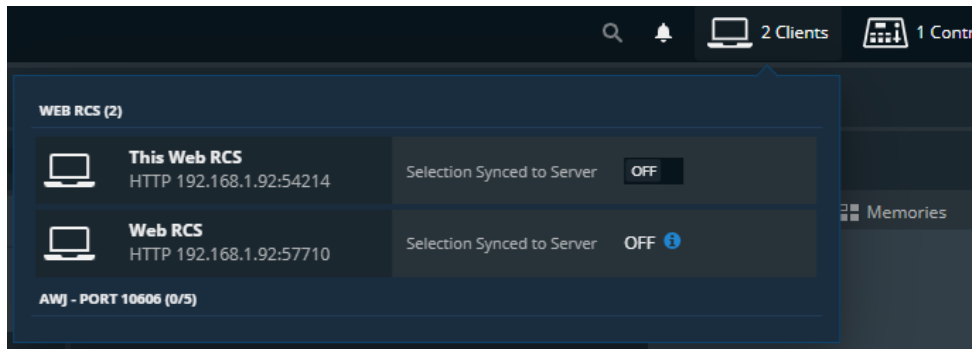
Slot 1:

Status	Valid
Label	My config 20210909
Date	09/09/2021
Time	2:00:27 PM
Firmware	2.3.79b

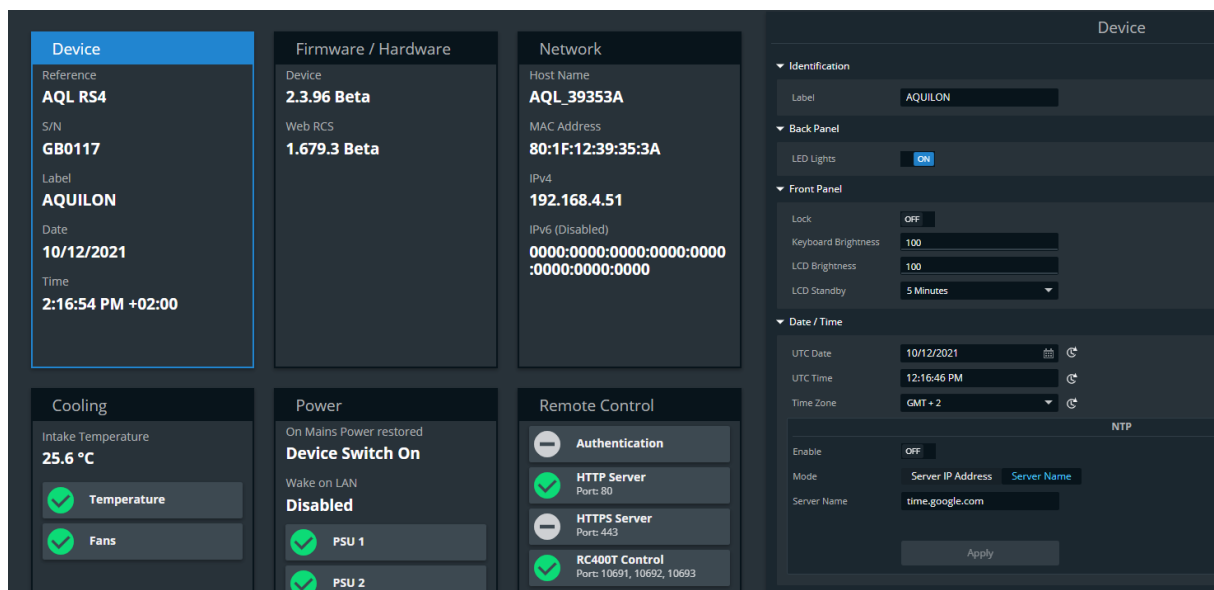
Slot 2:

Status

- Add the synchronization status of other Web RCS clients in the popup menu of the Web RCS. Connection type (HTTP or HTTPS) is also available.



- Add the Time Zone management
- Add the support of NTP (Network Time Protocol)



o New hardware support

- Add the support of new input and output Filler cards (ref. ACC-AQL-IN-FILLER and ref. ACC-AQL-OUT-FILLER)
- Add the support of new input and output SDVoE cards (ref. ACC_AQL_IN_SDVOE and ref. ACC_AQL_OUT_SDVOE)

o Front panel management:

- when an alarm is triggered: the Exit/Menu and Enter buttons blink in red until the alarm is cleared

o RC400T:

- Management of the joystick for layer sizing/positioning and layer cropping (not to be mismatched with layer masking)

Bug fixes:o **Processing**

- Unplugging a frozen source displayed on Program does not cause artefacts anymore.
- The pixel depth of HDMI output signals is not systematically limited to 8bits per component anymore.
- In the background layer, the black color is now real black.
- Layer cropping now works properly for AUX layers containing a Screen Program.
- The position of DPH 104's outputs is restored after rebooting.
- A layer transitioning with a circle effect close to the borders now works.
- Format validity is updated properly when changing the format.
- It is possible to set an output format with a smaller capacity than the one set in Preconfig.
- HDMI output generates properly signal with Samsung LED wall controllers.

o **Web RCS**

- In the rear panel view, the size of input and output connectors is the same.
- On the rear panel view, connector icons are displayed with the proper size with Chrome browser.
- In the Configuration panel of the dashboard, button size doesn't change size anymore.

o **Audio**

- Dante Receiver labels are not lost anymore after rebooting
- Dante input audio channel 1.1 now works on Output 1-channel 1 after rebooting

o **EDID**

- Format 1600x1060@60Hz with reduced blanking has a valid and consistent status.
- Deleted custom formats are properly removed from the preferred format list.

o **Preconfig**

- Image Helper contains a consistent list of formats.

o **Timers**

- On Program, timers work properly and don't remain stuck at 00:00:00 anymore.

Known issues:

- o None

Products	Aquilon RS alpha, Aquilon RS1, Aquilon RS2, Aquilon RS3, Aquilon RS4, Aquilon C, Aquilon C+
Date	May 18 th , 2021
Version	2.2.79

The version (s) indicated here above has (have) been tested and validated by the QA Department.

Technical Notes:

Warnings:

- **LivePremier Updater version 2.2.79 and above can now update the Dante firmware.**
 - **A pre-requisite is to install AW Dante Firmware v3.7.0.16 (embedding Dante Firmware 4.2.0.28, available on Analog Way's website,) using the Dante Firmware Update Manager tool before updating the LivePremier firmware.**
- **When updating to version 2.2.79 from a 1.x version, the following drawbacks may be encountered:**
 - **Any output configured with a capacity 2 but delivering a dual-resolution format (up to 2560x1600 @ 60hz) will have its capacity automatically changed to 1.**
 - **Due to the new implementation of Aux. Screens with several layers, the Screens Memories for these Auxiliary Screens must be checked after the update as the size of the previously existing layer is automatically forced to default 1920x1080.**

New features and Improvements:

- Capture a picture and store it to the Image Library. It is possible to capture:
 - an input
 - a Program output
 - a Multiviewer output
- New Layer Masking: Top-Bottom-Left-Right adjustments to mask the content of a layer without zooming. The settings are including in the layer/screen/master memories and can also be used for creative transitions
- Master Memories
 - Management of the last loaded Master Memory
 - New Master Memories with self-contained Screen Memories
- Color management:
 - Modification of output signal settings to decorrelate color encoding from color space.
 - Possibility to force output settings that are not compliant with standards and norms
 - Integration of latest BBC LUT version 1.5
 - Tetrahedral interpolation of color when using 3D LUT for better color accuracy.
- Dante firmware can be updated directly when updating the LivePremier firmware
- Support of the new multiviewer output card with DP connectors

- o Improvement of DPH104 support:
 - DPH104 firmware version displayed in the status of the DP output
 - Enabling/disabling of the DPH104 OSD
 - Selection of the DPH104 audio mode:
 - Mirror: all the DPH104 outputs copy the audio channels of its input
 - Split: the eight input audio channels are split over the outputs. channels 1-2 for output 1, channels 3-4 for output 2, channels 5-6 for output 3, channels 7-8 for output 4
 - Support of the DPH104 for the new multiviewer output card with DP connectors
- o Controllers:
 - Improved management of RC400T
 - Synchronization of the selections between RC400T and Web RCS
 - Improved LED button status for heterogeneous selections and assignments
 - Support of multiple RC400T controllers connected to a single device (no user management)
 - Support of the new SB124T-3 controller

Bug fixes:

- o Display the "Projector 1200p" format only for SDI input/output plugs
- o When using a DPH104, the 1920x1200 format must not be Projector 1200p but computer 1920x1200
- o Correction of SDI audio problems:
 - Bad clock programming
 - Support of 32kHz and 44.1kHz
- o HDMI deadlock problems
- o When unfreezing an Input, its content seems to rollback one frame
- o Bad management of images capacity with a 30Hz internal rate
- o Autoscale function should be inactive for multiviewer output during boot
- o Level A / Level B menu for SDI outputs should be available only when the format is 3G-SDI
- o An alarm is raised when the power supply units are not powered at the same time

Known issues:

- o None

Products	Aquilon RS alpha, Aquilon RS1, Aquilon RS2, Aquilon RS3, Aquilon RS4, Aquilon C, Aquilon C+
Date	March 22 nd , 2021
Version	2.1.89

The version (s) indicated here above has (have) been tested and validated by the QA Department.

Technical Notes:

Warning: When updating to version 2.1.x from a 1.x version, the following drawbacks may be encountered:

- Any output configured with a capacity 2 but delivering a dual-resolution format (up to 2560x1600 @ 60hz) will have its capacity automatically changed to 1
- Due to the new implementation of Aux. Screens with several layers, the Screens Memories for these Auxiliary Screens must be checked after the update as the size of the previously existing layer is automatically forced to default 1920x1080.

Bug fixes:

- o 1080i@59,94Hz output format is not stable.
- o After rebooting the device, the Auto Scale function for Multiviewers Memories is not in the proper state.

Known issues:

- o Some HDCP2.2 displays may not work with UHDTV format at 50Hz. A workaround is to use the equivalent VESA computer format 3840x2160 @50Hz.

Products	Aquilon RS alpha, Aquilon RS1, Aquilon RS2, Aquilon RS3, Aquilon RS4, Aquilon C, Aquilon C+
Date	February 24 th , 2021
Version	2.1.85

The version (s) indicated here above has (have) been tested and validated by the QA Department.

Technical Notes:

Warning: When updating to version 2.1.x from a 1.x version, the following drawbacks may be encountered:

- Any output configured with a capacity 2 but delivering a dual-resolution format (up to 2560x1600 @ 60hz) will have its capacity automatically changed to 1
- Due to the new implementation of Aux. Screens with several layers, the Screens Memories for these Auxiliary Screens must be checked after the update as the size of the previously existing layer is automatically forced to default 1920x1080.

Bug fixes:

- o The background, with still image, may not display correctly after changing the system's internal rate
- o The total number of layers available in the system can be incorrect for some configurations
- o The management of a group of 3x1 inputs is incorrect
- o Backgrounds do not work when the output format is 1080i

Known issues:

- o Some HDCP2.2 displays may not work with UHDTV format at 50Hz. A workaround is to use the equivalent VESA computer format 3840x2160 @50Hz.

Products	Aquilon RS alpha, Aquilon RS1, Aquilon RS2, Aquilon RS3, Aquilon RS4, Aquilon C, Aquilon C+
Date	February 9 th , 2021
Version	2.1.82

The version (s) indicated here above has (have) been tested and validated by the QA Department.

Technical Notes:

Warning: When updating to version 2.1.x from a 1.x version, the following drawbacks may be encountered:

- Any output configured with a capacity 2 but delivering a dual-resolution format (up to 2560x1600 @ 60hz) will have its capacity automatically changed to 1
- Due to the new implementation of Aux. Screens with several layers, the Screens Memories for these Auxiliary Screens must be checked after the update as the size of the previously existing layer is automatically forced to default 1920x1080.

New features and Improvements:

- o Global improvement of log system (for tech support purposes)

Bug fixes:

- o when only one DP output card is installed, the DPH104 feature is not available
- o With Revision 0 of HDMI input board, the input EDID is not applied properly
- o When an output is rotated, there may be some dead pixels
- o Master Preset cannot be loaded at startup
- o Auxiliary Screen 20 cannot be used
- o It is impossible to affect a live source or a frame in a layer with SB124T-2
- o DisplayPort to HDMI converters by Plugable don't work properly when HDCP is activated.

Known issues:

- o Some HDCP2.2 displays may not work with UHDTV format at 50Hz. A workaround is to use the equivalent VESA computer format 3840x2160 @50Hz.

Products	Aquilon RS alpha, Aquilon RS1, Aquilon RS2, Aquilon RS3, Aquilon RS4, Aquilon C, Aquilon C+
Date	December 14 th , 2020
Version	2.1.73

The version (s) indicated here above has (have) been tested and validated by the QA Department.

Technical Notes:

Warning: When updating to version 2.1.x from a 1.x version, the following drawbacks may be encountered:

- Any output configured with a capacity 2 but delivering a dual-resolution format (up to 2560x1600 @ 60hz) will have its capacity automatically changed to 1
- Due to the new implementation of Aux. Screens with several layers, the Screens Memories for these Auxiliary Screens must be checked after the update as the size of the previously existing layer is automatically forced to default 1920x1080.

New features and Improvements:

- o Support of 2-sample interleave division (**2SI** / SMPTE 425-5:2019) for Quad 3G-SDI inputs.
- o Support new ratios **x0.5 and x2 for frame-locking** the internal rate of the device.
- o **Improved latency** when the system's internal rate is frame-locked. The latency of frame-locked sources is about **one frame**.
- o New HDMI output setting to adjust the **DDC clock** if necessary.
- o Support of new formats for DPH104 in slicer mode:
 - Quad 1920x1200 @50/59,94/60Hz
 - Dual 1920x2160 @25/30/50/59,94/60Hz
- o Reordering of the EDID table to prioritize formats such as 4096x2160.
- o Display and support of EDID extensions (no edition):
 - **DisplayID**
 - **CEA 861-G**
- o Support of HDMI 2.0 over fiber I/O cards ref **ACC-AQL-IN-HDMI-FBR** and **ACC-AQL-IN-HDMI-FBR**
- o In the mobile version of the Web RCS, add the possibility to load Master Memories.

Bug fixes:

- o HDMI outputs may not be compatible with some HDMI Fiber Extenders.
- o Input signal 1200p is not correctly decoded on SDI plugs.
- o input format 1035i is not detected properly on SDI plugs.
- o The Background content of an output is not displayed properly when an AOI is applied to this output.
- o When the Screen Memory bank is full and « auto select empty screen memories » is used to save a Master Memory, then the Web RCS is not displayed properly.

- o For SDI inputs with audio channels routed to Dante output channels, unplugging the SDI input causes long term audio artefacts on Dante channels.
- o An image slot assigned with a timer should never be out of capacity.
- o Input test patterns are not displayed properly for input groups when the content aspect ratio is different from Native.
- o When an image is deleted from the library, its name is still displayed in the library.
- o Screens using soft-edge blending with Backgrounds are not displayed properly.
- o Various minor bugs

Known issues

- Some HDCP2.2 displays may not work with UHD TV format at 50Hz. A workaround is to use the equivalent VESA computer format 3840x2160 @50Hz.

Products	Aquilon RS alpha, Aquilon RS1, Aquilon RS2, Aquilon RS3, Aquilon RS4, Aquilon C, Aquilon C+
Date	July 31 st , 2020
Version	2.0.231

The version (s) indicated here above has (have) been tested and validated by the QA Department.

Technical Notes:

Warning: When updating to version 2.0.23x from a 1.x version, the following drawbacks may be encountered:

- Any output configured with a capacity 2 but delivering a dual-resolution format (up to 2560x1600 @ 60hz) will have its capacity automatically changed to 1
- Due to the new implementation of Aux. Screens with several layers, the Screens Memories for these Auxiliary Screens must be checked after the update as the size of the previously existing layer is automatically forced to default 1920x1080.

Bug fixes:

- o 12G-SDI output signal is not stable at 29.97Hz and 23.94Hz
- o SDI outputs jitter is too important with 100/1001 internal rates (59,94Hz, 29.97Hz and 23.94Hz)
- o Result of HDR to SDR conversions may be slightly too bright
- o When in group mode, the SMPTE test pattern must be displayed using the HDR configuration of the plug.

Products	Aquilon RS alpha, Aquilon RS1, Aquilon RS2, Aquilon RS3, Aquilon RS4, Aquilon C, Aquilon C+
Date	July 27 th , 2020
Version	2.0.228

The version (s) indicated here above has (have) been tested and validated by the QA Department.

Technical Notes:

Warning: When updating to version 2.0.228 from a 1.x version, the following drawbacks may be encountered:

- Any output configured with a capacity 2 but delivering a dual-resolution format (up to 2560x1600 @ 60hz) will have its capacity automatically changed to 1
- Due to the new implementation of Aux. Screens with several layers, the Screens Memories for these Auxiliary Screens must be checked after the update as the size of the previously existing layer is automatically forced to default 1920x1080.

New features and Improvements:

o HDR support and real time SDR/HDR conversion

- Available for any input, image and output
- Conversion allows:
 - To display any source on any display whatever their dynamic ranges are.
 - To display SDR and HDR contents in the same screen
 - To switch layers' content (including cross-transitions) whatever their dynamic ranges of the sources are
- First select in the Pre-Configuration>System step if you want to handle HDR content and the internal profile you want to use for processing SDR/HD10/HLG BBC. If you choose HDR10 or HLG BBC, all the HDR settings appears in the Inputs, Outputs and Images pages:

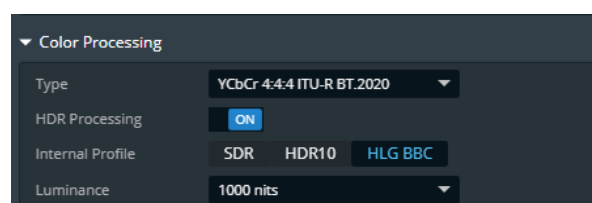


Figure 2: HDR feature pre-configuration

- Then for each input, image and output indicate the profile settings. By default, the Auto mode is selected and achieved processing based on EDID and info-frames data.

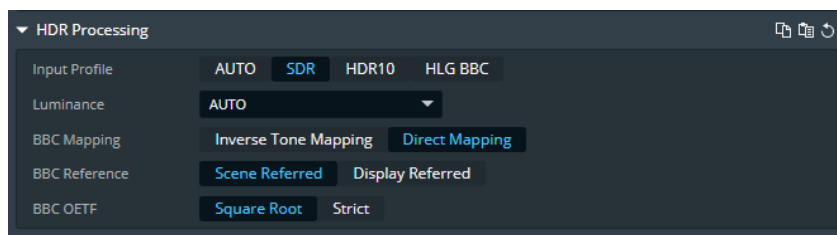


Figure 3: Example of HDR setting for Inputs

o Management of Input and Output groups

- Support of content up to 4K over 1, 2, 3 or 4 cables and process it as one single stream
- Save resources:
 - One single 4K content spread over 4 HD outputs
 - Get more layers optimizing the processing pipelines for large displays using more than 4HD outputs
- Easily work using the Leader input or output



Figure 4: Example of 1x2 output grouping

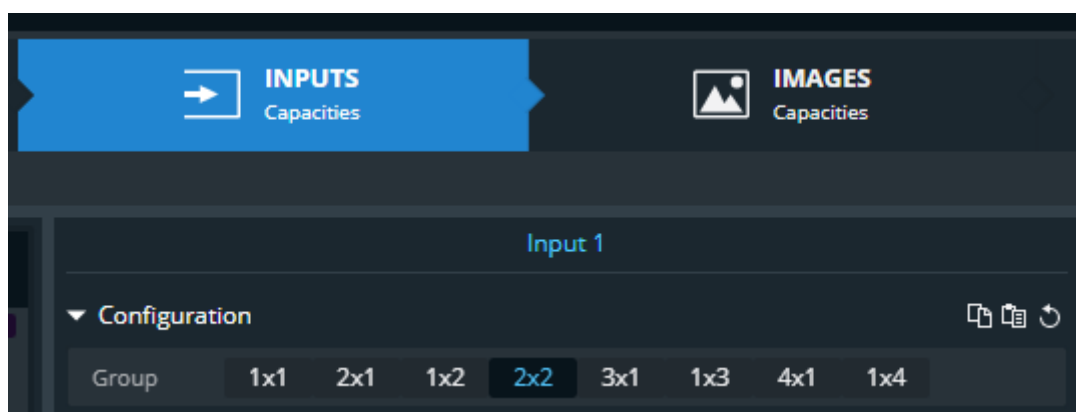


Figure 5: Example of 2x2 input grouping

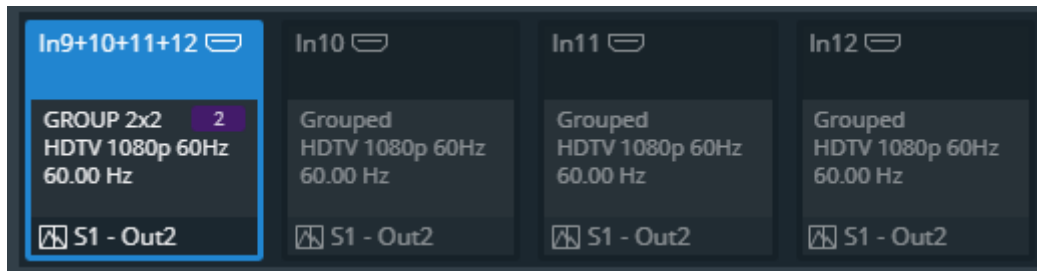


Figure 6: Example of grouped input display

o **Layers available in Auxiliary Screens**

- Each Auxiliary output screen natively two HD layers or on 4k layer per aux. output.
- Preempt resources of next adjacent outputs to get up to 8 layers in a single aux. output. Outputs whose resources preempted are disabled.
- Useful for DSM application

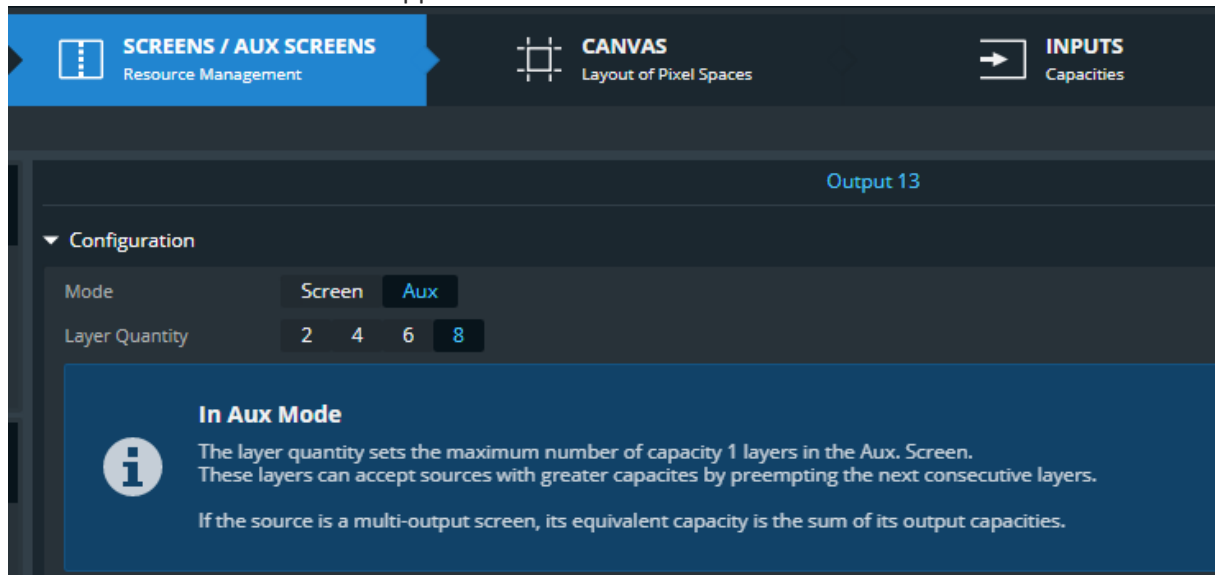


Figure 7: Example of auxiliary

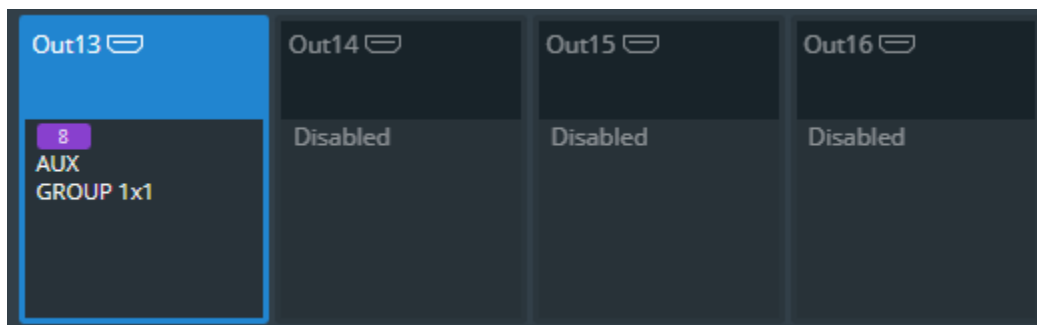


Figure 8: Example of an auxiliary output preempting the next 3 outputs

o **On board timer available in in screen layers and aux. layers**

- New 4th timer
- Assign your timer to an image resource
- Use this image in any screen layer and aux. layer

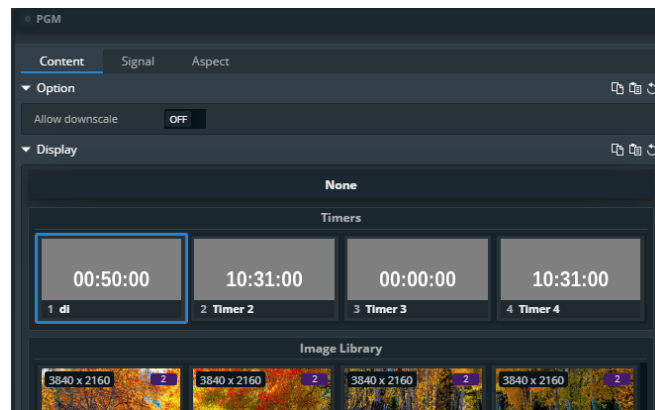


Figure 9: Selecting a timer as an Image source

o Layer memories

- Save some or all the properties of a layer as a template
- Apply this template to any layer selection with a simple click or drag&drop
- Include category filters (source, position, size, cut&fill, border, transitions, ...)
- Supported by RC400-T

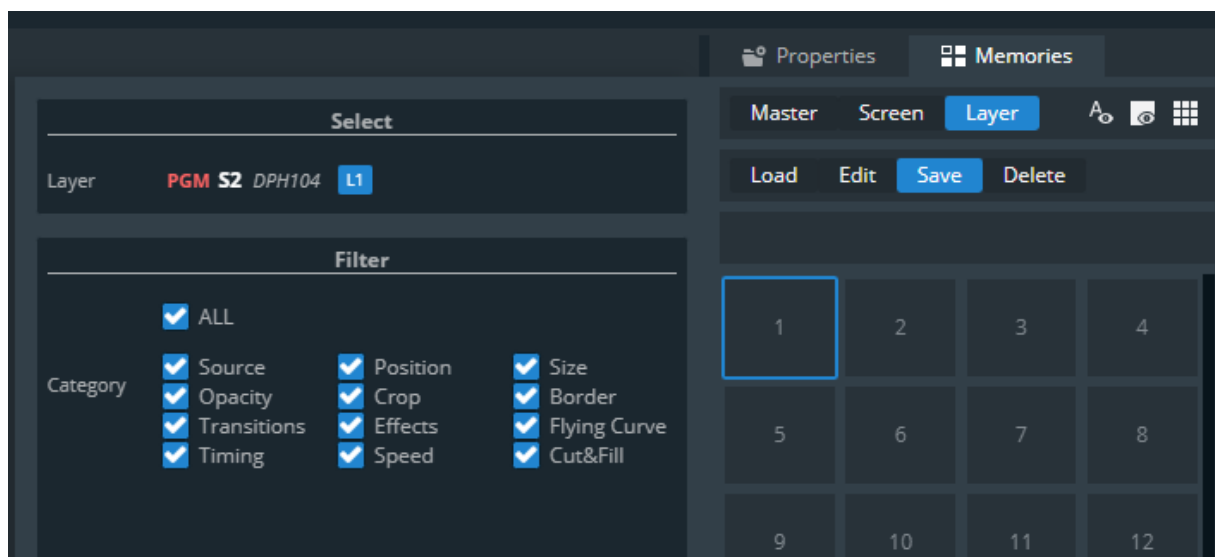


Figure 10: List of filters when saving a Layer memory

o New 'TAKE filter' management

- Loading a Master Memory automatically activates/arms in the TAKE Filter the screens that have been saved with this memory, so they are part of the next transition
- When saving a Master Memory, the screen selection to be saved is automatically loaded according to the screens currently armed in the TAKE filter

o New Management of Background

- The same input can be used as Background in all compatible outputs

o Screen Patterns

- Patterns now displayed over multi-output screens
- Include a new 'Geometric' pattern

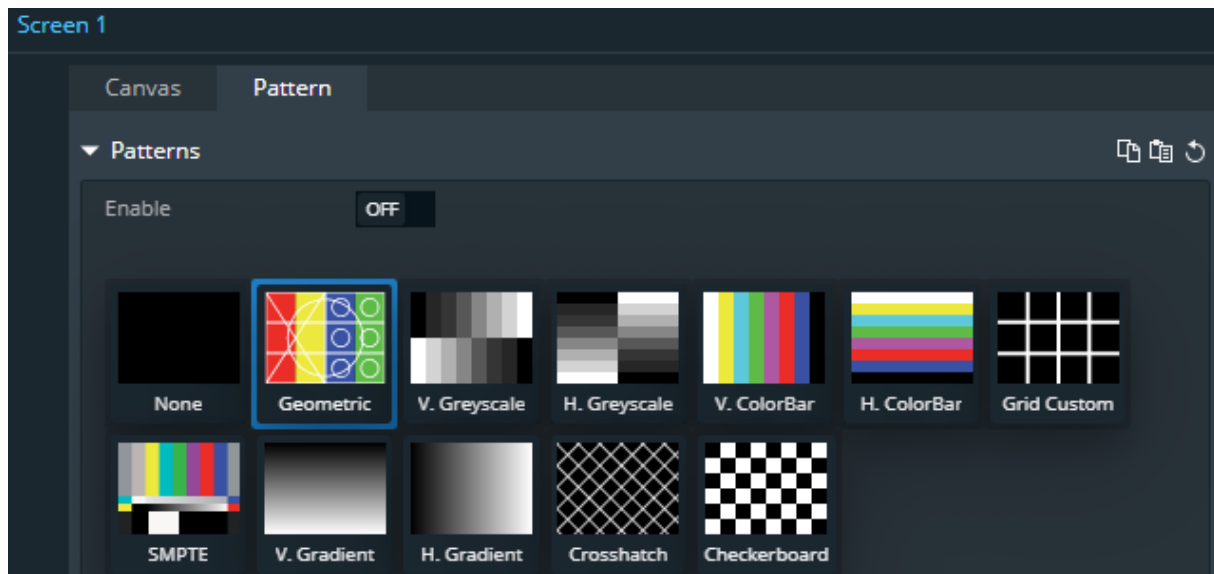


Figure 11: List of Screen patterns

- o **Up to 64 widgets per multiviewer outputs**
 - Possibility to display all your screens and inputs at the same time on a single display
- o **New Basic OSD mode for multiviewers' widgets**
 - Title only to save space
- o **4K30Hz managed with capacity 1 when Internal rate is 30Hz**
 - 4K30Hz is now processed with
 - More 4K30Hz outputs available for Program
 - More layers available to handle 4K30Hz inputs
- o **HDCP 2.2 support, in addition to HDCP 1.4**
 - For HDMI and DisplayPort inputs and outputs.
 - Supports conversion from HDCP 1.4 to HDCP 2.2
- o **90° step rotation of output groups/DPH104**
 - Add a 1-frame latency
 - Enable the rotation of output group in the page
SETUP>Preconfig>Screens/Aux.Screens

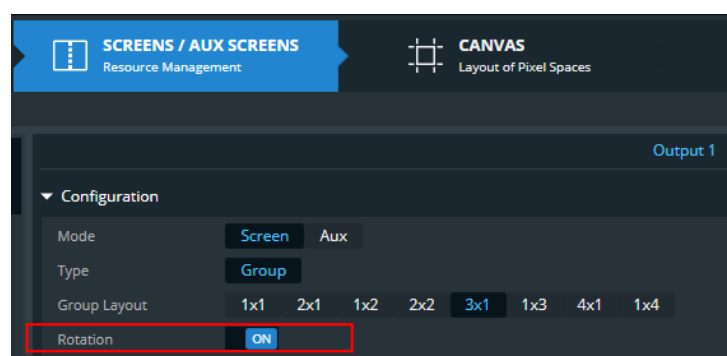


Figure 12: Enabling the rotation of an Output Group

- In the page SETUP>Preconfig>Canvas, select the group or DPH 104 in the tree view and adjust the rotation angle. This rotation is applied to each output individually.

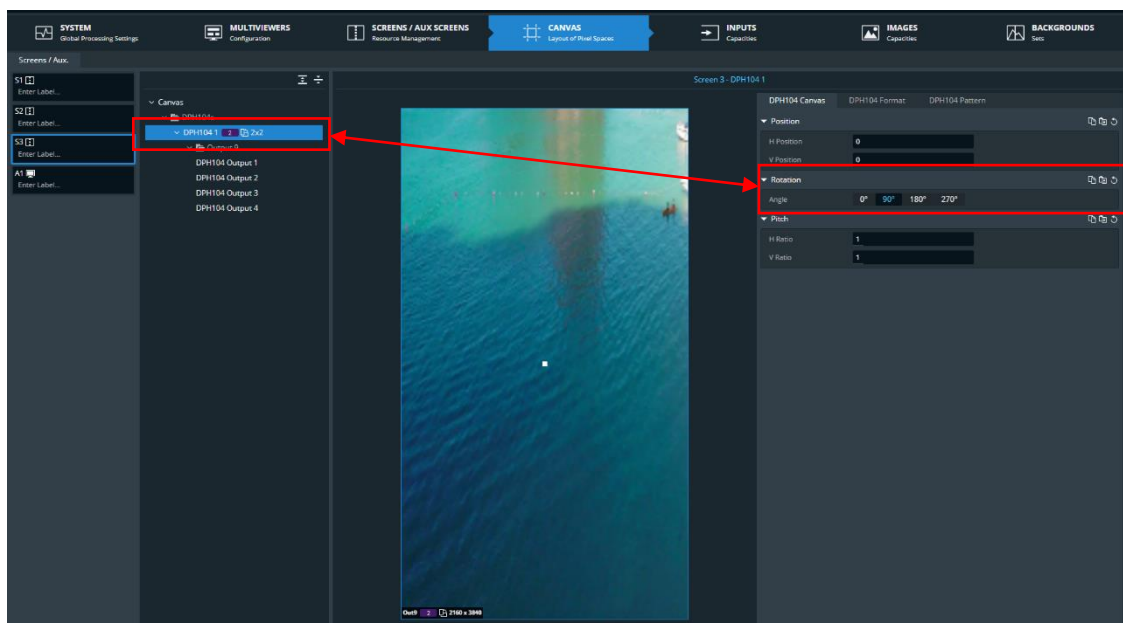


Figure 13: Setting of the rotation angle

- o **Management of level A & B for outputs delivering 3G-SDI formats**
 - When the output format is HDTV 1080p at 60Hz, Level A or B can be selected

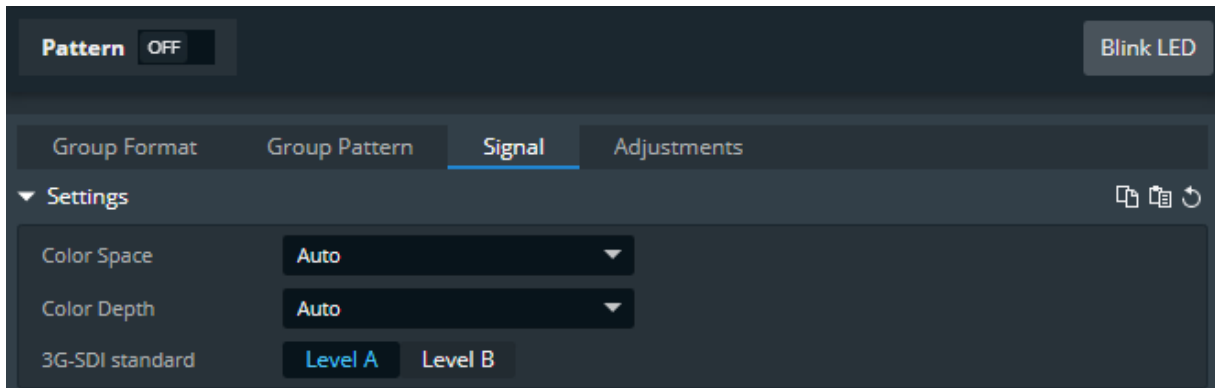


Figure 14: Setting of 3G-SDI level A/>B

- o **Support of DPH104**
 - Configure your output in DPH104 Slicer mode
 - Select the outputs layouts
 - Select the output format used for all the DPH104's outputs
 - Using 16 x DPH104 on a full C+ Aquilon, get up to 64 Full HD outputs for your Program.

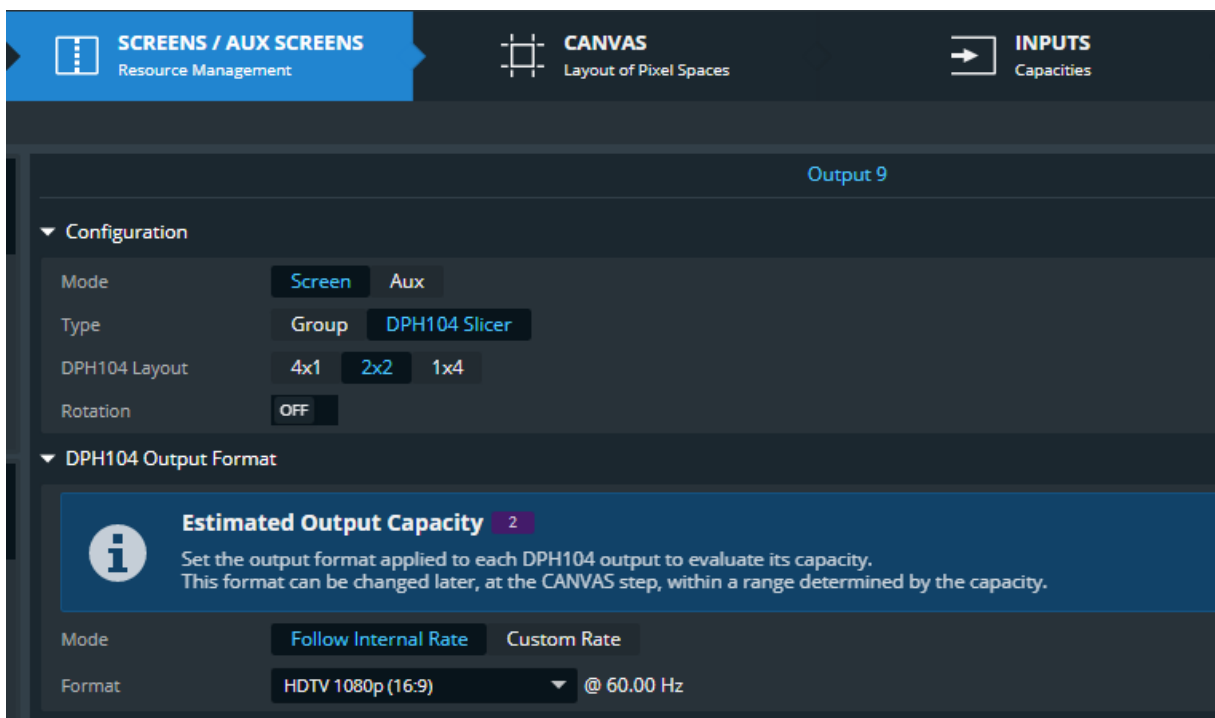
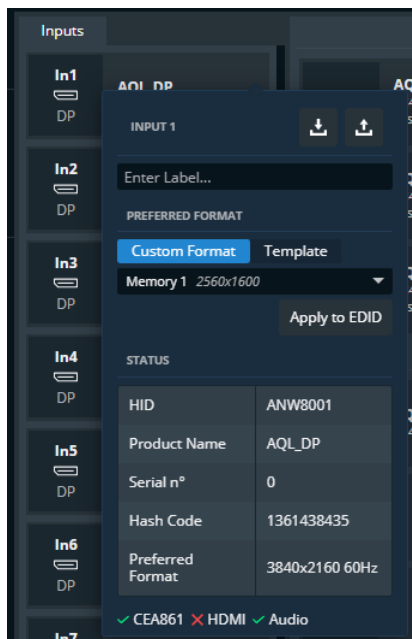


Figure 15: Settings of the DPH104 Slicer mode

- o **Support for forthcoming HDMI2.0 over Optical Fiber I/O cards (end of Q3)**
 - Four SC multimode fiber optical 4K60 4:4:4 ports per I/O card
 - HDCP 2.2, embedded audio (up to 8 channels) and HDR
 - Up to 600m/1900ft at 4K60Hz 4:4:4 and up to 2500m/8200ft at 1080p60Hz 4:4:4.

Web RCS's new features and improvements:o **Improved Input EDID Management**

- Change directly the preferred format in the input section. No need to do it the library
- Edit the EDID label directly

**Figure 16: Input EDID settings**o **New SET>Preconfig>Canvas page**

- Add the management of Output Groups and DPH104
- New tree view for a better understanding of what is selected

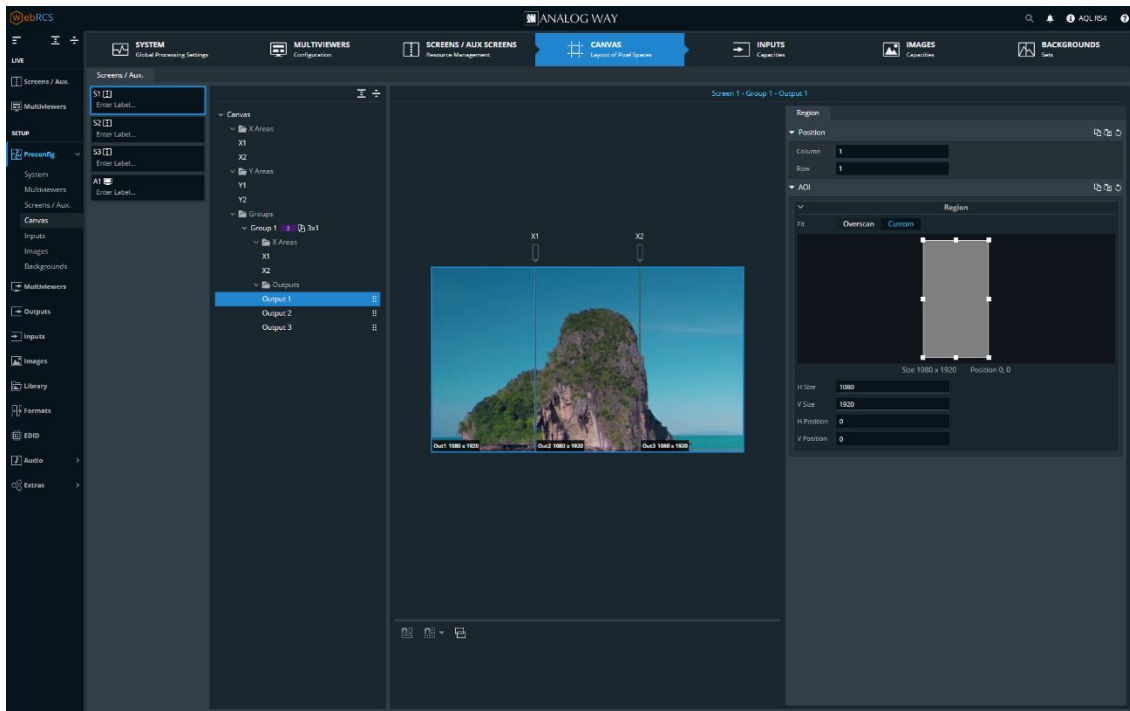


Figure 17: Canvas page with tree view

o Background creation and management simplified

- Not necessary anymore to declare an input or a still image as a background
- All settings are now available on a single page
- Background sets simply updated by dragging & dropping sources into the outputs

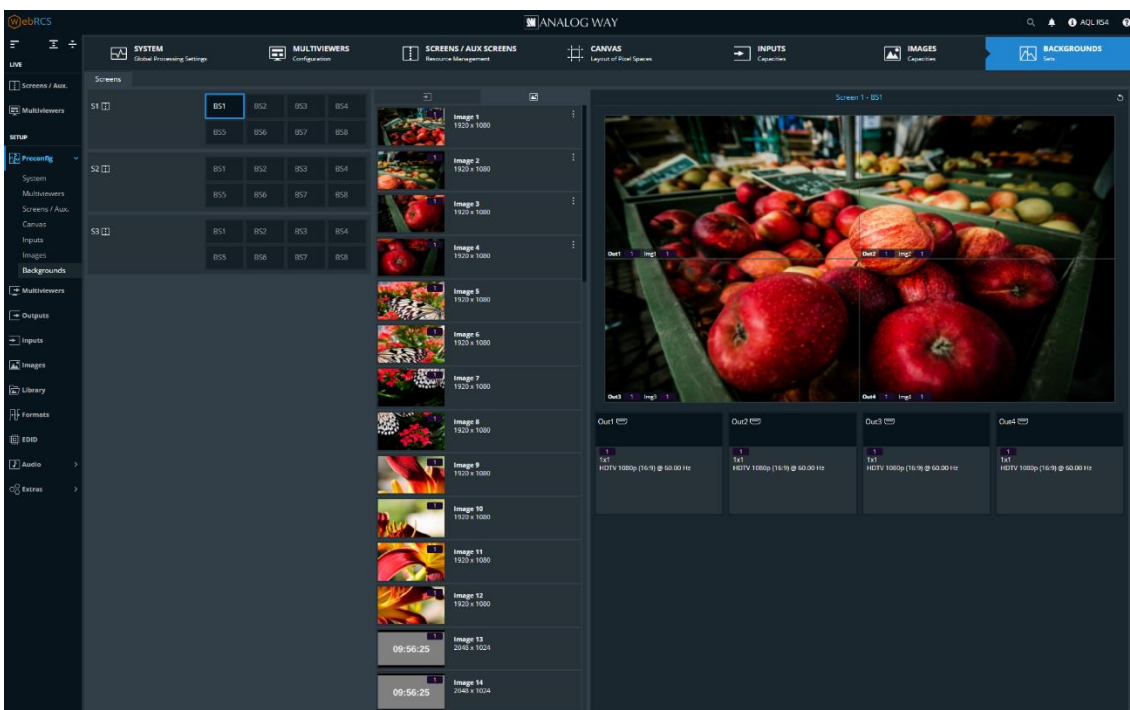


Figure 18: new Canvas page

- o **Web RCS screens workspace can be easily rearranged and resized**
 - Rearrange your screens and aux. screens with a simple drag and drop move
 - Resize the width of a screen or aux. screen to better match reality
 - Adjust the height of the workspace to give more space to the Preview or Program.

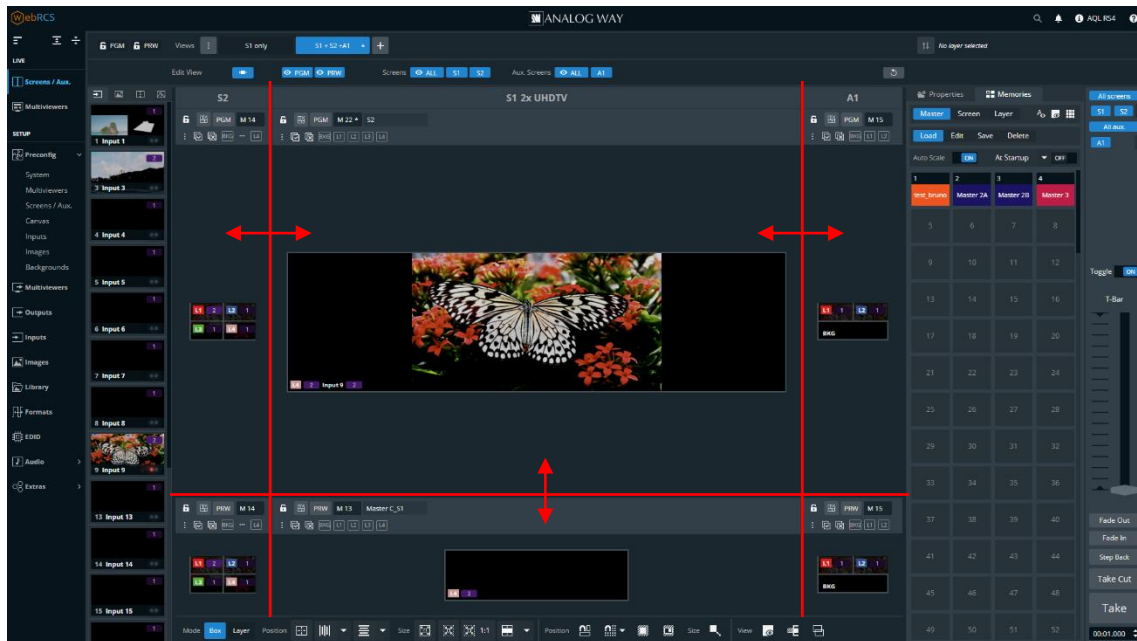


Figure 19: Adjustable Web RCS layout

- o **Web RCS password protection**
 - Restrict access to the Web RCS via a password
 - Password can be customized (by default, it is the device MAC address)
 - Protection can be disabled from the front panel menu
 - Available for desktop and mobile version

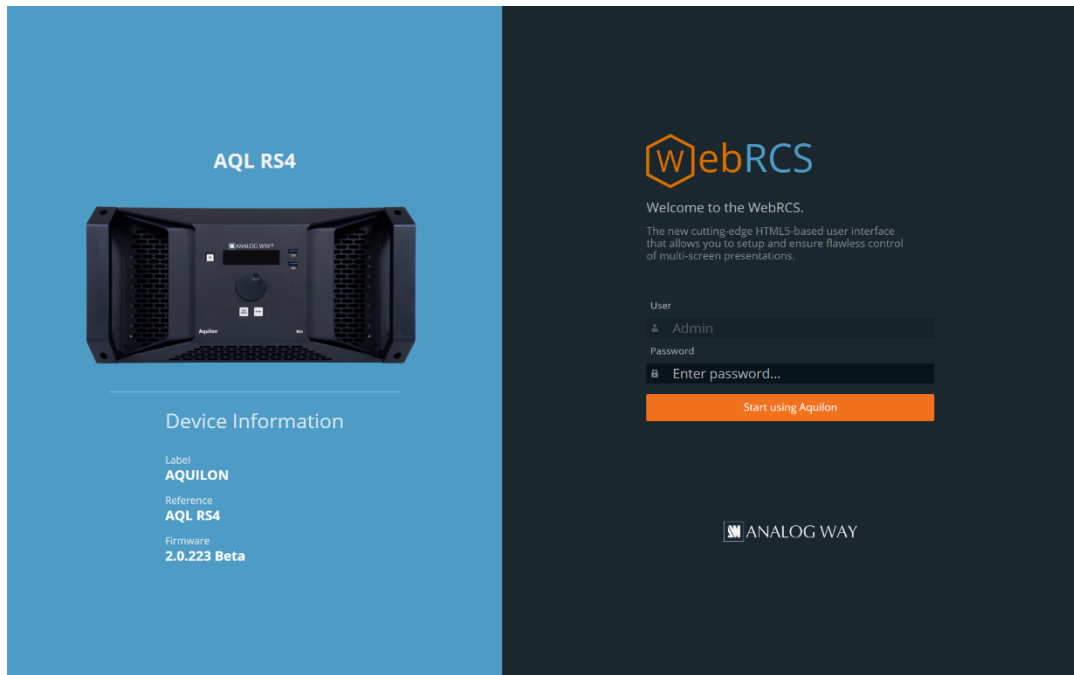


Figure 20: Web RCS protection page

o View Memories

- Easily create layouts displaying different screens and aux. outputs, and save them in view memories
- User can instantly switch from one view to another by clicking on the corresponding view memory button at the top of the page

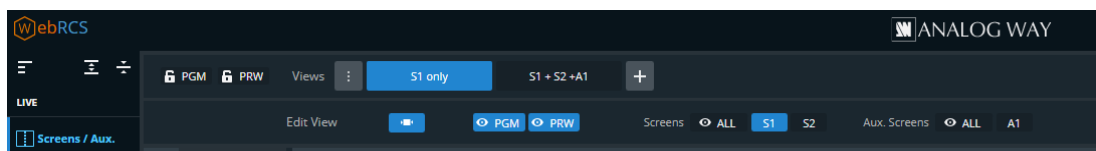


Figure 21: Tool bar for View Memories

o Memories tabs

- Add a background color for the memory buttons to better arrange and identify them
- Change the layout of the memory buttons to improve readability: 1, 2 or 4 columns
- Users can now hide empty memory buttons and/or memory labels

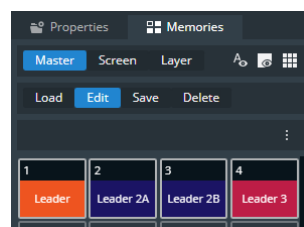


Figure 22: Memories Filters & Colors

Known limitations & constraints:

- o Input Groups

- All the inputs of a group must receive signals with the same format. All non-compliant inputs are blackened.
- The position of the inputs in a group is determined by the group (2x1,1x2,2x2...)
- All the input settings are common to the group (HDCP/HDR, color settings, Pattern, Crop, Keying).
- o HDR
 - Color settings may not have the expected linear behavior.
 - Soft-Edge blending curves are not linear in HDR mode. Using the projectors blending curves is recommended.
 - Keyed inputs may be degraded in HDR mode.
- o OUTPUT GROUPS and DPH104
 - All the output settings are common to the group (HDCP/HDR, color settings, Pattern,).
 - Rotation of outputs with capacity 2 disables the adjacent output
 - Soft-edge blending curves are available for outputs groups but not for the sub-outputs of DPH104. Using the projectors blending curves is recommended.
- o PATTERN
 - Output test patterns are generated using the internal profile. If the output is converted to another profile, the pattern may not be compliant with the SMPTE standard. To obtain "Broadcast" results, the internal profile must be set to SDR and the internal color space must be YCbCr 4:4:4 ITU-R.BT709 Limited
 - Only Raster Patterns contains transparency.
- o TIMER
 - There is a 500ms delay between a timer displayed on a multiviewer output and the same timer displayed on a Screen or an Auxiliary Screen.

Known issues:

- o 12G-SDI output signal is not stable at 29.97Hz and 23.94Hz

Products	Aquilon RS alpha, Aquilon RS1, Aquilon RS2, Aquilon RS3, Aquilon RS4, Aquilon C, Aquilon C+
Date	May 12 th , 2020
Version	1.2.11

The version (s) indicated here above has (have) been tested and validated by the QA Department.

Technical Notes:

New features and Improvements:

- o None

Web RCS's new features and improvements:

- o None

Bug fixes:

- Working with RC400T can crash the Web RCS server

Products	Aquilon RS alpha, Aquilon RS1, Aquilon RS2, Aquilon RS3, Aquilon RS4, Aquilon C, Aquilon C+
Date	April 27 th , 2020
Version	1.2.10

The version (s) indicated here above has (have) been tested and validated by the QA Department.

.....

Technical Notes:

New features and Improvements:

- o Ability to load a Master Memory on Program and Preview when the device starts.
- o Support of the RC400T event controller (requires RC400T firmware 1.00.03 minimum)

Web RCS's new features and improvements:

- o None

Bug fixes:

- HDMI outputs don't work with specific external devices due to low level negotiation failure

Products	Aquilon RS alpha, Aquilon RS1, Aquilon RS2, Aquilon RS3, Aquilon RS4, Aquilon C, Aquilon C+
Date	March 11 th , 2020
Version	1.1.36

The version (s) indicated here above has (have) been tested and validated by the QA Department.

Technical Notes:

New features and Improvements:

- o None.

Web RCS's new features and improvements:

- o None

Bug fixes:

- SDI outputs may deliver content with artefacts
- DP output signal doesn't work with specific display systems.

Products	Aquilon RS alpha, Aquilon RS1, Aquilon RS2, Aquilon RS3, Aquilon RS4, Aquilon C, Aquilon C+
Date	February 24 th , 2020
Version	1.1.32

The version (s) indicated here above has (have) been tested and validated by the QA Department.

Technical Notes:

New features and Improvements:

- o None.

Web RCS's new features and improvements:

- o None

Bug fixes:

- Input test patterns don't work when the input doesn't receive any signal
- Input test patterns don't work with SFP inputs
- Keying function doesn't work with SFP features
- The device doesn't start if the power supply units are connected to the mains one at a time
- The Web RCS fails to start when the device contains many Master/Screen memories (>100)

Products	Aquilon RS alpha, Aquilon RS1, Aquilon RS2, Aquilon RS3, Aquilon RS4, Aquilon C, Aquilon C+
Date	December 17 th , 2019
Version	1.1.29

The version (s) indicated here above has (have) been tested and validated by the QA Department.

Technical Notes:

New features and Improvements:

- o Support for new Aquilon RS alpha
- o Support for new I/O boards with 4x SFP-12G SDI
- o New default 50Hz EDIDs in the library (HDMI 1920x1080 50Hz, HDMI 3840x2160 50Hz, DP 1920x1080 50Hz and DP3840x2160 50Hz)

Web RCS's new features and improvements:

- o **Pre-configuration Section**
 - The capabilities of inputs, images, outputs and layers have been renamed to 1, 2, 4, 6 and 8 with dedicated help sections to explain what each capability means in the context
 - New tool to ease the configuration of soft-edge and video/LED walls display applications
 - New tool to quickly enable/disable HDCP for all inputs, outputs and multiviewers
- o **Setup section**
 - In inputs, outputs and multiviewers pages, all the links on the rear panel view of the device are available for fast page changing
 - New help texts explaining how to set up a custom output format
 - In the EDID page, AW EDIDs are now displayed at the top of the page, in a specific section called 'Default EDID'
 - The naming and classification of the list of output formats has been improved.
- o **Live Section**
 - Layers
 - New toolbar to quickly align / center / resize layer(s)
 - New button to quickly enable/disable the visibility of empty or pre-empted layers
 - Memories
 - Tab of Master Memories now appears first in the list.
 - New button to reorder memories in the default order (increasing index)

- Improve interface for labelling memories
- Tally indicators for Screen Memories
- Visual indicator for Memories indicating a specific filter has been registered
- Possibility to hide empty presets
- When recording a master preset from the Program or Preview and the selected screens are already loaded with a screen preset, the default memory selected for each screen is now the current screen memory
- Layout creation
 - New tool for Multiviewers to easily create a scalable widget mosaic
 - New tool for Screens to easily create a scalable layer layout
 - New Cascading layout now cascades all the layers over Layer 1 set full screen
- o **Notifications:**
 - Notification issued when the system is configured as Framelocked and the Framelock source is lost.
 - Notification issued when one of the power supplies is missing or not powered.
 - New management and notifications of temperature alarms
 - Notification center is always accessible, even if all notifications were read.
- o **Miscellaneous**
 - Help page now points to the current product page of Analog Way's website
 - Contact Us page new layout

Bug fixes:

- o **Processing**
 - HDCP random disconnections
 - HDMI DDC error
 - Signal loss of HDMI output plugs
 - DP Input format 1080p@50Hz not detected properly
 - DP Output 4:2:0 sends wrong data
 - Custom format rate must be limited at 60Hz to be useable
 - 4K Live Inputs strobe on an Aux Screen when they are half cropped
 - Input cropping doesn't consider the content ratio
 - Layer fill option choice don't affect stills
 - Aux Output can't be used as reference of input/image used in backgrounds
 - Management of preempted layers when an "out of capacity" is encountered
 - Black areas are not handled properly
 - Blending is not applied properly
 - Using Master/Screen Memories with enabled Auto-scale can generate non integer layer position and size
 - Resetting the widget position on the multiviewer sets the value to -32768

- o **EDID**
 - No information is displayed when an invalid EDID is downloaded
 - Allow to add an EDID directly in the EDID banks using a bin file
 - Formats whose width is 4096px shouldn't be allowed in EDID templates as they are not supported
- o **Web RCS**
 - if an invalid EDID is imported in a slot, this slot can't be filled with another EDID anymore
 - The upload button is not visible on an empty EDID slot (impossible to download an EDID file)
 - Cut and Fill icon doesn't stay in the layer
 - When the system configuration is extracted, the parameter area must keep its position and size.
 - "On Program" and "On Preview" tallies are not raised for Inputs on used in backgrounds
 - Program/ Preview interface doesn't display layers correctly after specific resize
 - "Valid only" feature doesn't work with the management of Memories
 - Crop status is not updated properly
 - The crop settings have an unexpected behavior when an image is used in a background set
 - Front panel unlock doesn't work when reset is applied to the Front Panel Section
 - Impossible to delete a config memory slot
- o **System Configuration**
 - Modifying the system time is modified, the current count up or down are lost
 - Wake on LAN settings are lost after reboot
- o **Front Panel**
 - Folder names containing special characters can't be accessed from the front panel
 - Update phone number for APAC technical support
 - Pressing a very long time ENTER or EXIT keys should behave as Press and Hold

Known limitations

- Test patterns currently only available per output
- Layer anchor point currently defined as center of layer
- Output rotation not currently available
- HDCP2.2 not yet supported
- Capture input to store as frame not currently available
- Keyboard shortcuts not currently available except the "delete" key
- Offline simulator not yet available
- Support 4K60p signal as double or quad plugs not supported yet

- WebRCS is currently optimized to be used on a Google Chrome browser (any platform). Other browsers, such as Firefox, Safari, or Opera aren't currently fully supported

Products	Aquilon RS1, Aquilon RS2, Aquilon RS3, Aquilon RS4, Aquilon C, Aquilon C+
Date	October 13 th , 2019
Version	1.0.47

The version (s) indicated here above has (have) been tested and validated by the QA Department.

.....

Technical Notes:

Updating to firmware version 1.00.47 from older version

- Due to firmware update of very low-level components, the update time to 1.00.47 from an older version is long and the unit may seem stalled. Please DO NOT POWER OFF the unit as long as it has not rebooted.

Bug fixes:

- Color management on SDI outputs (HD/3G/6G/12G formats)
- Random problems of card detection at the device boot

Known limitations

- Screen Canvas layouts currently require manual setting of details include setting blending parameters by each edge
- Test patterns currently only available per output
- Layer layout tools to quickly define layer positions not available yet
- Layer anchor point currently defined as center of layer
- Output rotation not currently available
- HDCP2.2 not yet supported
- Capture input to store as frame not currently available
- Keyboard shortcuts not currently available except the "delete" key
- Offline simulator not yet available
- Further improvements of Screen and Layer resource allocations ongoing
- Support 4K60p signal as double or quad plugs not supported yet
- WebRCS is currently optimized to be used on a Google Chrome browser (any platform). Other browsers, such as Firefox, Safari, or Opera aren't currently fully supported

Known issues

- 1200p output format not properly supported yet (SDI only)

Products	Aquilon RS1, Aquilon RS2, Aquilon RS3, Aquilon RS4, Aquilon C, Aquilon C+
Date	October 2 nd , 2019
Version	1.00.40

The version (s) indicated here above has (have) been tested and validated by the QA Department.

.....

Technical Notes:

Updating to 1.00.40 from older firmware version

- Before updating to 1.00.40, please backup the current configuration (needed in case you should downgrade to an older firmware version later)
- Apply the firmware 1.00.40 (from the front panel USB or WebRCS) -> your current configuration will be kept and automatically upgraded
- Once the new firmware has been successfully applied, please backup your configuration (upgraded to 1.00.40)
- **DON'T import the configuration file exported from an older firmware version (it won't be converted and some settings might be lost)**
- You're done!

Initial published release

- Support for Aquilon RS1, RS2, RS3, RS4, C, C+
- Support for HDMI2.0, DP1.2, and SDI-12G input and output connector cards
- Manage 4K, DL and 2K inputs, outputs, and layers
- Create and operate Screens and Auxiliary outputs
- Configure layers as Mixers or Split layers, defined per Screen
- Screen Canvas Layout can be freely configured
- Pixel pitch management per output available
- Configure and operate Multiviewers with 24 widgets per screen
- Create and load Screen Presets, Master Memories, with filters by layer, attribute, screen, etc.
- Manage TAKE per Screen
- Upload and display still images
- Audio Dante™ available: de-embedding / re-embedding/ routing
- SB80-2 and SB124T-2 supported via direct USB connection (one controller max)
- Support custom formats up to 8196px in width
- EDID management supported up to 4K
- HDCP 1.x supported
- HTTP REST API available with documentation

- AWJ JSON protocol updated (may affect existing implementations, contact support for more details)
- Import/Export backup file from WebRCS or front panel

Known limitations

- Screen Canvas layouts currently require manual setting of details include setting blending parameters by each edge
- Test patterns currently only available per output
- Layer layout tools to quickly define layer positions not available yet
- Layer anchor point currently defined as center of layer
- Output rotation not currently available
- HDCP2.2 not yet supported
- Capture input to store as frame not currently available
- Keyboard shortcuts not currently available except the “delete” key
- Offline simulator not yet available
- Further improvements of Screen and Layer resource allocations ongoing
- Support 4K60p signal as double or quad plugs not supported yet
- WebRCS is currently optimized to be used on a Google Chrome browser (any platform). Other browsers, such as Firefox, Safari, or Opera aren't currently fully supported

Known issues

- 1200p output format not properly supported yet (SDI only)